

HP.Braindumps.HP0-Y49.v2014-08-20.by.JOAN.76q

Number: HP0-Y49
Passing Score: 650
Time Limit: 120 min
File Version: 14.5

VCEplus.com

Exam Code: HP0-Y49

Exam Name: Applying HP FlexNetwork Fundamentals



Exam A

QUESTION 1

Which wireless technology is limited to operate in a frequency range with only three non-overlapping channels?

- A. 802.1a
- B. 802.1x
- C. 802.1ad
- D. 802.11g

Correct Answer: D

Section: (none)

Explanation

Explanation/Reference:

Answer D

QUESTION 2

Which technology does the HP Virtual Connect support?

- A. InfiniBand connection to server backplane
- B. Fibre Channel over Ethernet (FCoE) V
- C. Distributed trunking
- D. Intelligent Resilient Framework (IRF)

Correct Answer: B

Section: (none)

Explanation

Explanation/Reference:

QUESTION 3

What is the default payload size for an 802.3 Ethernet frame on HP switches?

- A. 1500 bytes
- B. 1518 bytes
- C. 1522 bytes
- D. 9022 bytes

Correct Answer: A

Section: (none)

Explanation

Explanation/Reference:

Answer A

QUESTION 4

Two OSPF routers are on a segment, and both of their interfaces become active. What is the initial OSPF state after an adjacency has formed?

- A. Established
- B. Exstart
- C. Two-way
- D. Full

Correct Answer: B

Section: (none)

Explanation

Explanation/Reference:

QUESTION 5

A network administrator executes these commands on an HP **Comware** switch:

```
[Comware] super password level 1 simple hp1
```

```
[Comware] super password level 2 simple hp2
```

```
[Comware] super password level 3 simple hp3
```

```
[Comware] quit
```

```
<Comware>
```

The network administrator then executes this command to test the configuration:

```
<Comware> super 0
```

What is the outcome of the configuration?

- A. The network administrator is immediately placed into Monitor view.
- B. Access is denied because no level 0 password has been defined.
- C. A password of hp0 must be entered to access the view.
- D. The network administrator is immediately placed into visitor view.

Correct Answer: D

Section: (none)

Explanation

Explanation/Reference:

QUESTION 6

Which STP protection feature does HP recommended against rogue switches?

- A. Root Protection should be enabled on access layer switches.
- B. BPDU Protection should be enabled on edge ports and uplink ports.
- C. Root Protection should be enabled on access and aggregation layer switches.
- D. BPDU Protection should be enabled on edge ports.

Correct Answer: D

Section: (none)

Explanation

Explanation/Reference:

QUESTION 7

On an HP **Comware** switch, which view must an administrator access in order to execute the debug command?

- A. Manager
- B. Operator
- C. System
- D. User

Correct Answer: D

Section: (none)

Explanation

Explanation/Reference:

QUESTION 8

An HP Provision switch has port A1 connected to port g1/0/1 of an HP Comware switch. The ProVision port has the following configuration: vlan 1 untag A1 vlan 10 tag A1 vlan 20 tag A1

Which **Comware** configuration will allow the three VLANs to successfully pass traffic between the two switches?

- A. interface g1/0/1

```
port link-type trunk
port trunk permit vlan 1 10 20
```

- B. interface g1/0/1 port trunk encapsulation dot1q
port trunk native vlan 1
port trunk permit vlan 1 10 20
- C. interface g1/0/1 port trunk
port trunk
permit auto-vlan
- D. interface g1/0/1 port trunk
port trunk
permit auto-vlan

Correct Answer: A

Section: (none)

Explanation

Explanation/Reference:

QUESTION 9

When adding a new member to an existing IRF domain, which of the following must you perform first?

- A. Define the IRF priority.
- B. Create the IRF logical port.
- C. Define the IRF domain name.
- D. Define the IRF member number.

Correct Answer: D

Section: (none)

Explanation

Explanation/Reference:

QUESTION 10

Which statement is true concerning spanning tree protocols and HP switches?

- A. ProVision switches use non-standard default cost values
- B. Comware switches have spanning tree enabled, by default
- C. ProVision switches, by default, auto-sense edge ports

D. Comware switches use their serial number as the switch identifier in the bridge ID

Correct Answer: C

Section: (none)

Explanation

Explanation/Reference:

QUESTION 11

What is the maximum number of active links supported between a device and HP ProVision switches when distributed trunking is used to connect the device to the ProVision switches?

- A. Two
- B. Four
- C. Six
- D. Eight

Correct Answer: A

Section: (none)

Explanation

Explanation/Reference:

QUESTION 12

Which **ProVision** configuration includes 10.0.3.0/24, which represents VLAN 30 in OSPF area 0?

- A. vlan 30 ip ospf area 0
- B. vlan 30 area 0
- C. interface vlan 30 ip ospf area 0
- D. router ospf area 0 vlan 30

Correct Answer: A

Section: (none)

Explanation

Explanation/Reference:

QUESTION 13

Which open standard allows a switch with PoE support to correctly determine the power requirements of a connected device?

- A. ICMP
- B. AutoPower
- C. LLDP-MED
- D. CDP

Correct Answer: C

Section: (none)

Explanation

Explanation/Reference:

The Link Layer Discovery Protocol (LLDP) is a vendor-neutral link layer protocol in the Internet Protocol Suite used by network devices for advertising their identity, capabilities, and neighbors on an IEEE 802 local area network, principally wired Ethernet. Media Endpoint Discovery is an enhancement of LLDP, known as LLDP-MED, that provides the following facilities:

- Auto-discovery of LAN policies (such as VLAN, Layer 2 Priority and Differentiated services settings) enabling plug and play networking.
- Device location discovery to allow creation of location databases and, in the case of Voice over Internet Protocol (VoIP), Enhanced 911 services.
- Extended and automated power management of Power over Ethernet (PoE) end points.

QUESTION 14

Which statement is true about wireless technologies?

- A. 802.11n uses MIMO technology to improve data rates
- B. 802.11g uses GIGO technology to improve security.
- C. 802.11b/g use an 802.11a-compatible frequency
- D. 802.11a uses the less crowded 2.4 GHz range

Correct Answer: A

Section: (none)

Explanation

Explanation/Reference:

IEEE 802.11n is an amendment to IEEE 802.11-2007 as amended by IEEE 802.11k-2008, IEEE 802.11r-2008, IEEE 802.11y-2008, and IEEE 802.11w-2009, and builds on previous 802.11 standards by adding multiple-input multiple-output (MIMO) and 40 MHz channels to the PHY (physical layer), and frame aggregation to the MAC layer.

MIMO is a technology that uses multiple antennas to coherently resolve more information than possible using a single antenna. One way it provides this is through Spatial Division Multiplexing (SDM), which spatially multiplexes multiple independent data streams, transferred simultaneously within one spectral channel of bandwidth. MIMO SDM can significantly increase data throughput as the number of resolved spatial data streams is increased

QUESTION 15

Examine this output from the **Comware** command shown in the exhibit. Based on the flag of ACDEF, what is the status of the aggregated link?

```
<Comware> display link-aggregation verbose bridge-aggregation 2
<-output omitted->
System ID: 0x8000, 000f-e267-6c6a
```

Local:

Port	Status	Priority	Oper-key	Flag
GE1/0/3	8	32768	2	(ACDEF)
GE1/0/4	8	32768	2	(ACDEF)

Remote:

Actor	Partner	Priority	Oper-key	SystemID	Flag
GE1/0/3	32	32768	2	0x8000, 000f-r267-57ad	(ACDEF)
GE1/0/4	26	32768	2	0x8000, 000f-r267-57ad	(ACDEF)

- A. Static LACP link aggregation is configured, and the aggregated link is operational with load sharing not being performed.
- B. Static LACP link aggregation is configured, and the aggregated link is operational with load sharing being performed.
- C. Static link aggregation is configured, and the aggregated link is operational with load sharing being performed
- D. Static link aggregation is configured, and the aggregated link is operational with load sharing not being performed.

Correct Answer: B

Section: (none)

Explanation

Explanation/Reference:

QUESTION 16

Which HP **ProVision** switch command defines 10.1.1.1 as a syslog server?

- A. Info-center 10.1.1.1
- B. Syslog 10.1.1.1
- C. Logging 10.1.1.1
- D. Logserver 10.1.1.1

Correct Answer: C

Section: (none)

Explanation

Explanation/Reference:

The switch event log is stored in volatile memory and is lost on a reboot. It is best to configure a syslog server to handle the log on another server in non-volatile memory.

For syslog:

HP-Provision-Switch (config)# logging <IPv4 or IPv6 address>

Reference: <http://h10032.www1.hp.com/ctg/Manual/c02667379.pdf>

QUESTION 17

Which command can a network administrator execute on an HP **Commware** switch to manage configuration files?

- A. Restore startup-configuration
- B. Erase startup-configuration
- C. Rename config
- D. Erase startup-config

Correct Answer: A

Section: (none)

Explanation

Explanation/Reference:

QUESTION 18

Refer to the exhibit. Exhibit Comware switch output

[Comware] display link-aggregation verbose bridge-aggregation 1

< - output omitted ->

Local:

Port	Status	Priority	Oper-key	Flag
GE1/0/3	U	32768	2	(AG)
GE1/0/4	U	32768	2	(AG)

Remote

< - output omitted ->

A network administrator has implemented link aggregation on an HP Comware switch using LACP. Assume the two ports are functioning at the data link layer between the Comware switch neighboring switch. The network administrator execution display link-aggregation verbose command and notices the flag of AG for the two links. As shown in the exhibit. What does this indicate?

- A. The link is marked as a backup because there are already eight active links in the aggregation
- B. The link is up, but LACP failed the negotiation on the port
- C. The link is down
- D. The link is up, but LACP has been disabled on the port

Correct Answer: B

Section: (none)

Explanation

Explanation/Reference:

Port Status: S -- Selected, U -- Unselected

Flags: A -- LACP_Activity, B -- LACP_Timeout, C -- Aggregation, D -- Synchronization, E -- Collecting, F -- Distributing, G -- Defaulted, H -- Expired

The flag is a one-octet LACP state flags field. From the least to the most significant bit, they are represented by A through H as follows:

A indicates whether LACP is enabled. 1 for enabled and 0 for disabled. B indicates the timeout control value. 1 for short timeout, and 0 for long timeout. C indicates whether the link is

Get Latest & Actual HP0-Y49 Exam's Question and Answers from Lead2pass.

<http://www.lead2pass.com>

3

considered as aggregatable by the sending system. 1 for true, and 0 for false.

D indicates whether the link is considered as synchronized by the sending system. 1 for true, and 0 for false.

E indicates whether the sending system considers that collection of incoming frames is enabled on the link. 1 for true and 0 for false.

F indicates whether the sending system considers that distribution of outgoing frames is enabled on the link. 1 for true and 0 for false.

G indicates whether the receive state machine of the sending system is using default operational partner information. 1 for true and 0 for false. H indicates whether the receive state machine of the sending system is in the expired state. 1 for true and 0 for false

QUESTION 19

Refer to the exhibit. Exhibit Switch configuration

```
[Comware] interface bridge-aggregation 1
[Comware-Bridge-Aggregation1] link-aggregation mode dynamic
[Comware-Bridge-Aggregation] quit
[Comware] interface g1/0/1
[Comware-GigabitEthernet1/0/1] port link-aggregation group 1
[Comware-GigabitEthernet1/0/1] quit
[Comware] interface g1/0/2
[Comware-GigabitEthernet1/0/2] port link-aggregation group 1
[Comware-GigabitEthernet1/0/2] quit
[Comware] interface bridge-aggregation 1
[Comware-Bridge-Aggregation1] port link-type trunk
[Comware-Bridge-Aggregation] port trunk permit vlan 100 200
```

```
ProVision (config) # A1-A2 trk1 trunk
ProVision (config) # vlan untagged trk1
ProVision (config) # vlan 100 tagged trk1
ProVision (config) # vlan tagged trk1
```

A network administrator is configuring an aggregated link between an HP Comware and ProVision switch. The network administrator applies the configurations to the switches, as shown in the exhibit. The two links on the both switches are up, and they can see each other on both links in the local LLDP table.

What will be the outcome?

- A. The ProVision switch must initiate LACP for the link become active
- B. Link aggregation fails because the VLAN tagging was not configured correctly
- C. The Commware switch must initiate LACP for the link to become active
- D. Link aggregation fails because of a protocol issue

Correct Answer: C

Section: (none)

Explanation

Explanation/Reference:

QUESTION 20

When LLDP is enabled, which value is presented by default as the LLDP Chassis ID on both ProVision and Comware switches ?

- A. Router ID
- B. System Name
- C. IP address
- D. MAC address

Correct Answer: D

Section: (none)

Explanation

Explanation/Reference:

<Sysname> display lldp local-information

Global LLDP local-information:

Chassis ID : 00e0-fc00-5600

System name : Sysname

System description : H3C Comware Software. H3C S12508 Product Version S12500-C MW710-B01BBIT25. Copyright (c) 2004-2011 Hangzhou H3C Technology Co., Ltd. All rights reserved.

System capabilities supported : Bridge, Router

System capabilities enabled : Bridge, Router

MED information:

Device class : Connectivity device

MED inventory information of master board:

HardwareRev : REV.A

FirmwareRev : 109

SoftwareRev : 5.20 Alpha 2101

SerialNum : NONE

Manufacturer name : H3C

Model name : H3C Comware

Asset tracking identifier : Unknown

Table 1 Command output

Field

Description

Global LLDP local-information

Global LLDP information to be sent.

Chassis ID

Bridge MAC address of the device.

Get Latest & Actual HP0-Y49 Exam's Question and Answers from Lead2pass.

<http://www.lead2pass.com>

5

Reference:

[http://www.h3c.com/portal/Technical_Support___Documents/Technical_Documents/Switches/H3C_S12500_Series_Switches/Command/Command/H3C_S12500_CR-Release7128-](http://www.h3c.com/portal/Technical_Support___Documents/Technical_Documents/Switches/H3C_S12500_Series_Switches/Command/Command/H3C_S12500_CR-Release7128-6W710/04/201301/772500_1285_0.htm)

[6W710/04/201301/772500_1285_0.htm](http://www.h3c.com/portal/Technical_Support___Documents/Technical_Documents/Switches/H3C_S12500_Series_Switches/Command/Command/H3C_S12500_CR-Release7128-6W710/04/201301/772500_1285_0.htm)

QUESTION 21

Which statement is true about BPDU-Protection on HP Comware switches?

- A. BPDU-Protection is enabled on the root switches globally and will detect rogue switches on downlink ports.
- B. BPDU-Protection is enabled on the root switches, downlink ports and will detect rogue switches on those ports.
- C. BPDU-Protection is enabled globally and will detect rogue switches on edge ports.
- D. BPDU-Protection is enabled per port and will detect rogue switches on those ports.

Correct Answer: C

Section: (none)

Explanation

Explanation/Reference:

QUESTION 22

The HP Virtual Connect (VC) product is found within which HP FlexNetwork Architecture component?

- A. FlexBranch
- B. FlexFabric
- C. FlexManagement
- D. FlexCampus

Correct Answer: B

Section: (none)

Explanation

Explanation/Reference:

Reference:

<http://h20195.www2.hp.com/V2/GetPDF.aspx%2F4AA4-8174ENW.pdf>

QUESTION 23

A network administrator has a network of HP ProVision switches with operator and manager passwords configured. The network administrator uses the copy config startup-config tftp <IP_address> <filename> pc command on each switch to save all the switch configuration to a TFTP server. The network administrator copies the configuration from one HP ProVision 3800 switch to an identical HP ProVision 3800 switch. The new switch no longer prompts for an operator or manager passwords.

What is the cause of this problem?

- A. The passwords must be saved by using a separate TFTP transfer with the copy passwords tftp <IP_address> <filename> pc command.
- B. The passwords cannot be restored if they contain special characters misunderstood by the TFTP server.
- C. The passwords cannot be restored by default, to the startup-config file on the switch when executing the write memory command.

Correct Answer: C

Section: (none)

Explanation

Explanation/Reference:

QUESTION 24

Which Layer 2 mechanism should be used to authenticate wireless or wired users before allowing them access to network resources?

- A. 802.1X
- B. MIMO
- C. 802.1Z
- D. WPA

Correct Answer: A

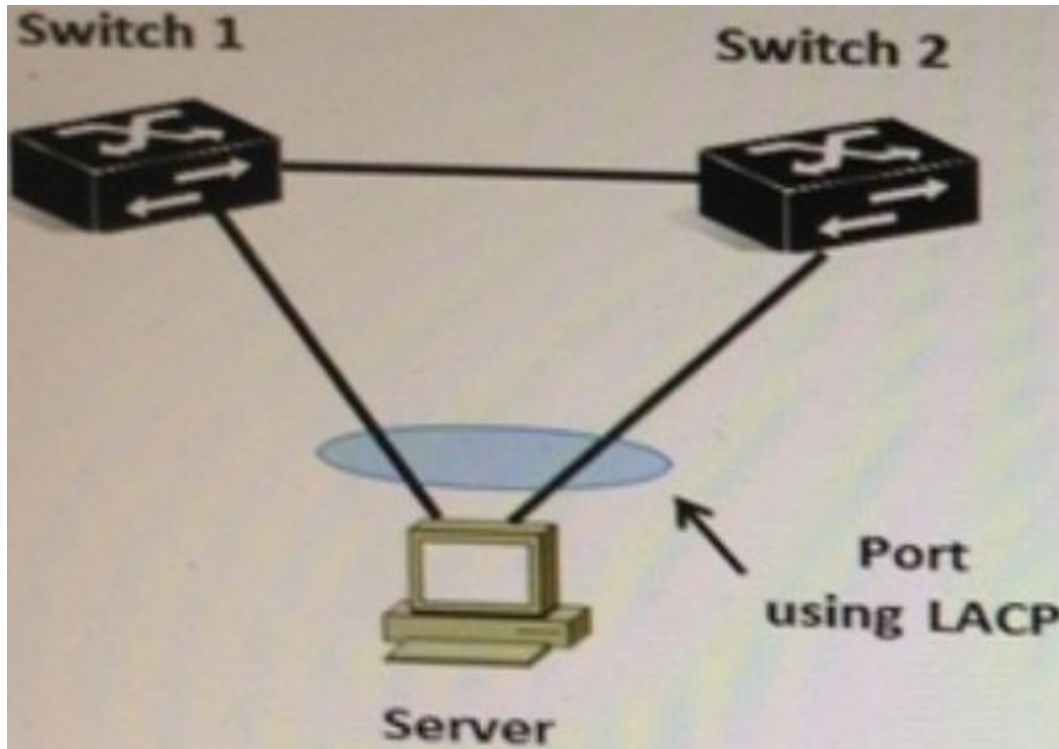
Section: (none)

Explanation

Explanation/Reference:

QUESTION 25

Refer to the exhibit.



The server shown in the exhibit is configured for dynamic LACP. There is only one link between Switch 1 and Switch 2. Which HP switching solution should the network administrator implement?

- A. Distributed trunking on Comware Switches or ProVision switches
- B. IRF on Comware switches or Provision switches
- C. IRF on Comware switches or but not on ProVision switches
- D. Distributed trunking on ProVision switches but not on Comware switches

Correct Answer: C

Section: (none)

Explanation

Explanation/Reference:

QUESTION 26

When configuring MSTP, how should VLANs be separated to perform load balancing?

- A. Placed into separate instances
- B. Placed into separate Regions
- C. Never configured with more than one VLAN per instance
- D. Configured with different priority values

Correct Answer: A

Section: (none)

Explanation

Explanation/Reference:

QUESTION 27

What is an advantage of connecting servers directly to the HP FlexFabric?

- A. Multiple protocols are consolidated into one converged fabric.
- B. All end user host systems are directly connected to this same fabric.
- C. Physical connections can be easily moved within the fabric.
- D. FCoE SANs are isolated from the servers by the fabric.

Correct Answer: C

Section: (none)

Explanation

Explanation/Reference:

QUESTION 28

A customer is implementing an access layer solution with four HP Comware switches in an IRF topology. The customer expects to add two additional switches of the same model. What must the customer do when adding the new switches?

- A. Implement a daisy chain topology to provide better resilience.
- B. Enable spanning tree prevent Layer 2 loops for the newly added switches
- C. Create a second IRF domain for the two new switches.
- D. Verify that the switch model supports at least six switches in an IRF topology.

Correct Answer: B

Section: (none)

Explanation

Explanation/Reference:

QUESTION 29

Which methods can a network administrator use to upgrade the operating system of an HP ProVision switch? (Select two)

- A. SCP
- B. SFTP
- C. SNMP
- D. USB
- E. FTP

Correct Answer: BD

Section: (none)

Explanation

Explanation/Reference:

QUESTION 30

In software-defined (SDN), what connects the Application layer to the physical device or Infrastructure layer?

- A. HP IMC VLAN Manager
- B. HP Enterprise Service
- C. HP SDN Controller
- D. HP Sentinel Security

Correct Answer: C

Section: (none)

Explanation

Explanation/Reference:

http://h17007.www1.hp.com/docs/van/vanfactsheet_4AA4-0792ENW.pdf

QUESTION 31

What is the maximum number of Watts that the IEEE 802.1af standard supports?

- A. 11.2

- B. 15.4
- C. 17.7
- D. 25.5

Correct Answer: B

Section: (none)

Explanation

Explanation/Reference:

QUESTION 32

What is a valid parameter that a network administrator can use when creating a Comware static route?

- A. hop-count
- B. precedence
- C. preference
- D. distance

Correct Answer: C

Section: (none)

Explanation

Explanation/Reference:

QUESTION 33

What does an IP host learn from an ARP reply?

- A. An IP address
- B. The local subnet
- C. A MAC address
- D. A Netbios name

Correct Answer: C

Section: (none)

Explanation

Explanation/Reference:

QUESTION 34

Match the description with the 802.11 standard (each option can only be used once).

In backward compatible with another 802.11 standard

▼
802.1n
802.1g
802.1a
802.1b

Supports only the 2.4Ghz frequency

▼
802.1n
802.1g
802.1a
802.1b

Supports channel bonding

▼
802.1n
802.1g
802.1a
802.1b

Requires devices to be 25 to 50 percent closer together than devices implementing the other 802.11 standards

▼
802.1n
802.1g
802.1a
802.1b

A.

Correct Answer: A

Section: (none)

Explanation

Explanation/Reference:

In backward compatible with another 802.11 standard

▼

802.1n
802.1g
802.1a
802.1b

Supports only the 2.4Ghz frequency

▼

802.1n
802.1g
802.1a
802.1b

Supports channel bonding

▼

802.1n
802.1g
802.1a
802.1b

Requires devices to be 25 to 50 percent closer together than devices implementing the other 802.11 standards

▼

802.1n
802.1g
802.1a
802.1b

QUESTION 35

Which HP device or port type can modify, read, and respond to 802.1Q VLAN tags?

- A. ProVision loopback ports
- B. Comware tagged ports
- C. Comware trunk ports
- D. Provision untagged ports

Correct Answer: C

Section: (none)

Explanation

Explanation/Reference:

QUESTION 36

A customer is implementing a network using HP ProVision switches. Which default setting applies to the ProVision switches?

- A. SSH is enabled
- B. All Ports are disabled
- C. Routing is enabled
- D. A static IP address is assigned to VLAN 1

Correct Answer: A

Section: (none)

Explanation

Explanation/Reference:

QUESTION 37

A network administrator has created and applied a configuration to an HP Provision switch. The network administrator then copied the active configuration to a TFTP server. Upon examining the configuration file on the TFTP server, the network administrator noticed that the operator and manager passwords were not in the saved configuration file.

Which command must the network administrator execute to accomplish this task?

- A. include-credentials
- B. include-passwords
- C. save-credentials
- D. backup-accounts

Correct Answer: A

Section: (none)

Explanation

Explanation/Reference:

QUESTION 38

What are the correct factory default settings when the HP Comware and Provision switches are originally booted?

- A. Provision and Comware switches have Telnet enabled.
- B. Provision and Comware switches have all Layer 2 interfaces disabled.
- C. Provision and Comware switches have default passwords defined.
- D. Provision and Comware switches have Layer 3 switching disabled.

Correct Answer: D

Section: (none)

Explanation

Explanation/Reference:

QUESTION 39

Refer to the exhibit. A network administrator is upgrading the operating system on an HP Comware switch. When copying the new image from a TFTP server to flash of the switch, the process fails because there is not enough flash to store the new operating system. The new operating system is 3.2MB in size. The network administrator then executes the commands shown in the exhibit

```
<Comware> dir
Directory of ofa0:/
```

0	drw-	6985954	Apr	26	2007	21:06:29	logfile
1	-rw-	3141842	Apr	27	2007	04:37:17	main.app
2	-rw-	1518	Apr	26	2007	12:05:38	config.cfg
3	-rw-	2045	May	04	2007	15:50:01	backcfg.cfg
4	-rwh	428	Apr	27	2007	16:41:21	hostkey
5	-rwh	572	Apr	27	2007	16:41:31	serverkey

14605 KB total (1955 KB free)

```
<Comware> dir /all
Directory of cfa0:/
```

0	drw-	6985954	Apr	26	2007	21:06:29	logfile
1	-rw-	3141842	Apr	27	2007	04:37:17	main.app
2	-rw-	1518	Apr	26	2007	12:05:38	config.cfg
3	-rw-	2045	May	04	2007	15:50:01	backcfg.cfg
4	-rwh	428	Apr	27	2007	16:41:21	hostkey
5	-rwh	572	Apr	27	2007	16:41:31	serverkey
6	-rw-	2737556	Oct	12	2007	01:31:41	[old.app]

14605 KB total (1955 KB free)

Which action should the network administrator perform to solve this problem?

- A. Reformat flash and execute the TFTP upgrade command.
- B. Execute the clear Flash command and perform the TFTP upgrade again.
- C. Execute the reset recycle-bin command and perform the TFTP upgrade again.
- D. Execute the delete old.app command and execute the TFTP upgrade command.

Correct Answer: C

Section: (none)

Explanation

Explanation/Reference:

When you delete a file with HP switches, it moves the file to the recycle bin and the file still occupies storage space. To permanently delete the file from the recycle bin, execute the reset recycle-bin command in the original directory of the file.

QUESTION 40

Which command can a network administrator execute to manage configuration files on an HP Comware switch?

- A. Write file
- B. Startup-default
- C. Delete
- D. Write memory

Correct Answer: C

Section: (none)

Explanation

Explanation/Reference:

QUESTION 41

A network administrator has just completed the initial configuration of an HP Comware switch. The network administrator saved the configuration to flash but wants to ensure that is backed up remotely to a TFTP server in case the switch fails. The TFTP server has an IP address of 10.1.100.1. Which command must the network administrator execute to back up the current configuration of the switch?

- A. Copy startup-configuration tftp://10.1.100.1
- B. Backup active-configuration to 10.1.100.1
- C. Copy config startup-configuration tftp 10.1.100.1
- D. Backup startup-configuration to 10.1.100.1

Correct Answer: D

Section: (none)

Explanation

Explanation/Reference:

QUESTION 42

Which term refers to aggregated links on HP ProVision switches?

- A. Meshing
- B. NIC teaming

- C. EtherChannel
- D. Trunking

Correct Answer: D

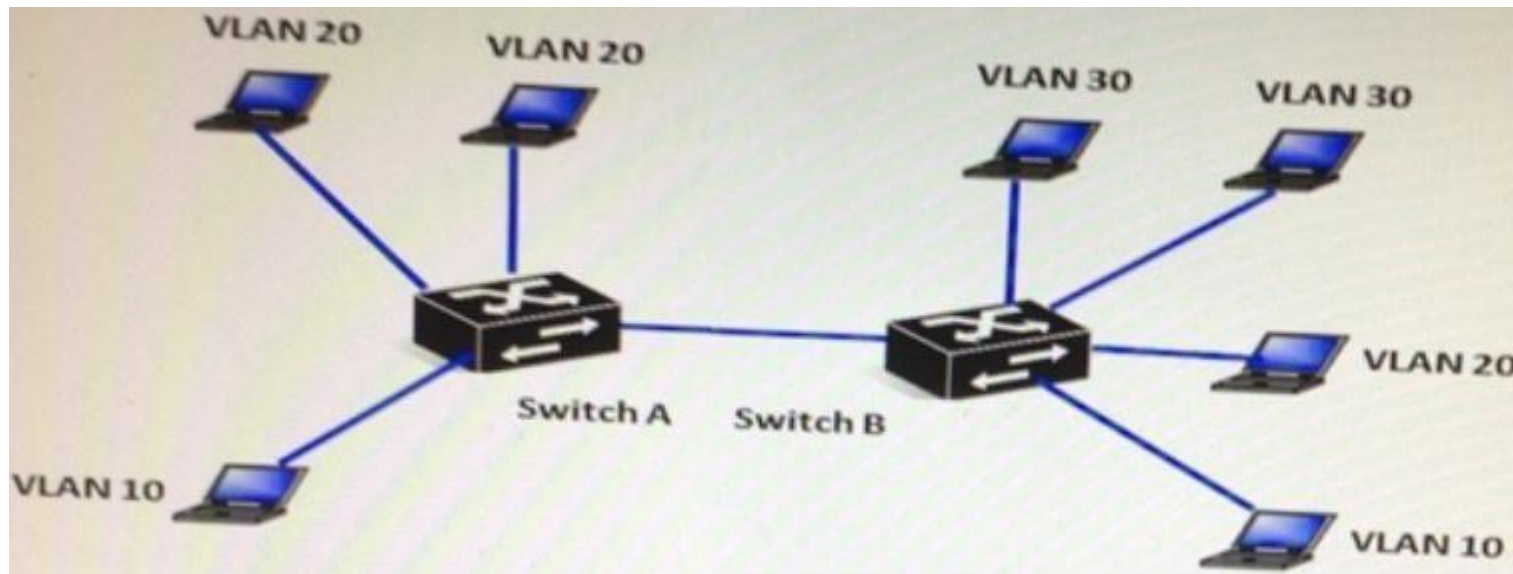
Section: (none)

Explanation

Explanation/Reference:

QUESTION 43

Refer to the exhibit.



The network consists of two IP ProVision Switches with routing disabled. How should the network administrator configure the link between Switch A and Switch B to ensure all hosts can communicate to all the other hosts within their respective VLANs?

- A. Tagged for VLAN 20 and tagged for VLAN 30
- B. Tagged for VLAN 10 and tagged for VLAN20
- C. Untagged for VLAN 10 and tagged for VLAN 30
- D. Untagged for VLAN 10 untagged for VLAN 20, and tagged for VLAN 30

Correct Answer: B

Section: (none)

Explanation

Explanation/Reference:

QUESTION 44

A company has purchased Intelligent Management Center (IMC) and wants to centralize AAA policies for the HP switches on the IMC server. Which protocol should the company use for the interaction between the IMC server and the HP switches?

- A. LACP
- B. LLDP
- C. SNMP
- D. RADIUS

Correct Answer: D

Section: (none)

Explanation

Explanation/Reference:

QUESTION 45

Which HP Intelligent Management Center (IMC) component would a network administrator check to verify the installation of IMC or an add-on module?

- A. Deployment Monitoring Agent
- B. Deployment Analyzer
- C. Service Manager
- D. Process Manager

Correct Answer: A

Section: (none)

Explanation

Explanation/Reference:

QUESTION 46

A network administrator has purchased the first HP Comware for a company. The network administrator has never used the CLI of a Comware device before and needs to perform specific management functions. Which action requires the network administrators to be in user view to execute from the Comware switch?

- A. Verify connectivity with transactions or ping tools
- B. Verify files located in flash memory
- C. Execute the display commands
- D. Create a VLAN and assign ports to it.

Correct Answer: B

Section: (none)

Explanation

Explanation/Reference:

QUESTION 47

Refer to the exhibit

ProVision # show ip route static

IP Route Entries

Destination	Gateway	VLAN	Type	Sub-Type	Metric	Dist.
10.10.20.177/32	reject		static		1	1
10.10.40.0/24	VLAN10	10	static		1	1
10.10.50.128/27	VLAN10	10	static		1	1
10.11.30.0/24	blackhole		static		1	1
127.0.0.0/8	reject		static		0	0

What does the term "blackhole" mean for the 10.11.30.0/24 route?

- A. The switch will drop all traffic sourced from 10.11.30.0/24 and will send an ICMP message to the source.
- B. The switch will drop all traffic sourced from 10.11.30.0/24 and will not send an ICMP message to the source.
- C. The switch will drop all traffic destined to 10.11.30.0/24 and will not send an ICMP message to the source.
- D. The switch will drop all traffic destined to 10.11.30.0/24 and will send an ICMP message to the source.

Correct Answer: C

Section: (none)

Explanation

Explanation/Reference:

QUESTION 48

Which parameter is enabled by default on an HP Commware switch, but disabled by default on an HP ProVision switch?

- A. Routing
- B. SSH
- C. Telnet
- D. DHCP client in VLAN1

Correct Answer: A

Section: (none)

Explanation

Explanation/Reference:

QUESTION 49

A routing protocol has three characteristics:

- Has fast convergence with triggered, incremental updates via link state advertisements (LSAs)
- Is classless protocol allowing for a hierarchical design with VLSM and route summarization
- Uses an intelligent metric (cost), which is the inverse of the bandwidth of an interface

Which protocol is it?

- A. BGP
- B. RIPv1
- C. RIPv2
- D. OSPF

Correct Answer: D

Section: (none)

Explanation

Explanation/Reference:

QUESTION 50

Refer to the exhibit.

Exhibit: partial output of the HP Comware display ip routing command. Note the Pre or Preference column

[Comware] display ip routing-table
Routing Tables: Public
Destinations : 7 Routers : 7

Destination/Mask	Proto	Pre	Cost	NextHop	Interface
10.2.0.0/18	OSPF	10	110	10.1.1.5	Vlan3
10.2.64.0/17	OSPF	10	130	10.1.1.13	Vlan5
10.2.128.0/17	OSPF	10	30	10.1.1.5	vlan3
10.2.192.0/17	OSPF	10	40	10.1.1.13	vlan5

<- output omitted ->

On an HP ProVision switch, what is the corresponding term used for the Pre column in the Comware output shown in the exhibit?

- A. Administrative distance
- B. Protocol ranking
- C. Cost
- D. Metric

Correct Answer: A

Section: (none)

Explanation

Explanation/Reference:

QUESTION 51

Which HP ProVision switch command could a network administrator use to upgrade the operating system from an attached USB drive?

- A. Update from usb flash
- B. Copy usb flash
- C. File-management usb
- D. Upgrade usb flash

Correct Answer: B

Section: (none)

Explanation

Explanation/Reference:

QUESTION 52

A network administrator attempts to create a loopback interface on an HP Comware switch, and it fails. These are the commands the network administrator issues to do this.

```
[Comware] interface loopback 2  
[Comware-Loopback2] ip address 172.18.20.1 255.255.255.0
```

What is the problem with the proposed configuration/

- A. Only HP ProVision switches support loopback interface
- B. Loopback IP addresses must be in the 10.x.x.x subnet ranges
- C. Only one loopback is supported in Comware Loopback2 cannot be configured
- D. Loopback interface on Comware must use 32-bit masks

Correct Answer: D

Section: (none)

Explanation

Explanation/Reference:

QUESTION 53

A network administrator configures this command on an HP ProVision Switch:

```
Vlan 30 ip helper-address 10.0.3.253
```

After the network administrator configures the command, using in VLAN 30 report that their PCs fail to acquire addresses using DHCP. Which command must the network administrator add to the ProVision switch configuration to solve this problem?

- A. IP helper-address enable
- B. DHCP enable
- C. IP routing
- D. DHCP-relay

Correct Answer: C

Section: (none)

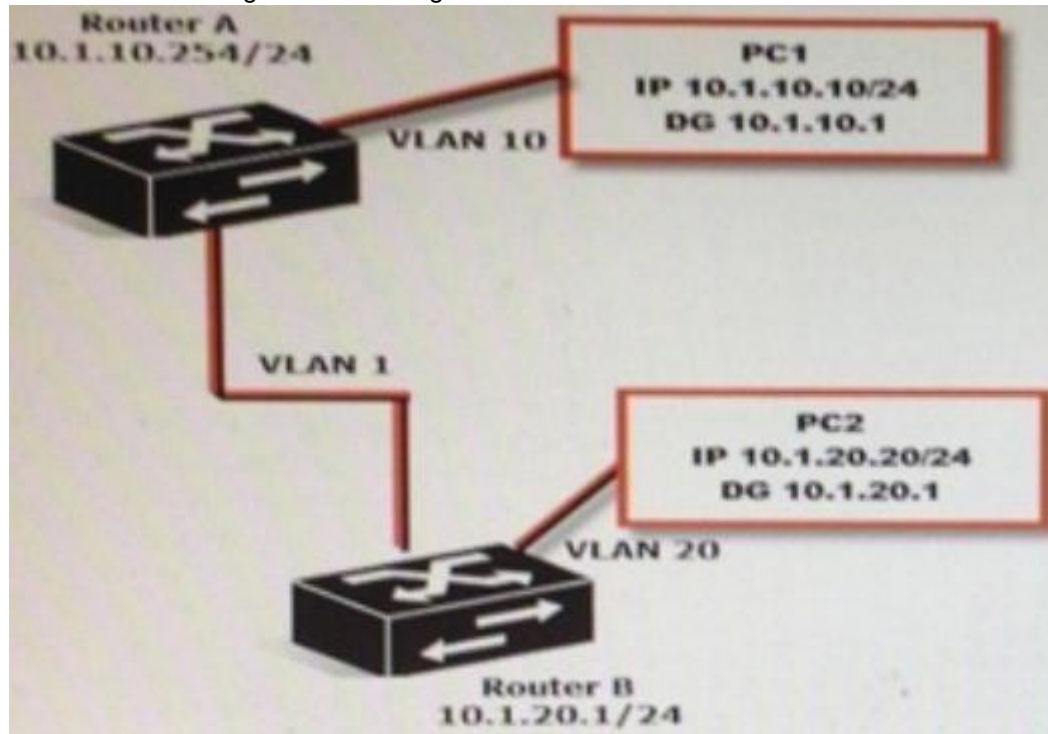
Explanation

Explanation/Reference:

QUESTION 54

Refer to the exhibit.

Exhibit: Network diagram and routing tables



Router A

Destination/Mask	Proto	NextHop	Interface
10.1.10.0/24	Direct	10.1.10.254	vlan10
10.1.20.0/24	Static	192.168.100.2	vlan1
192.168.100.9/30	Direct	192.168.100.1	vlan1

Router B

Destination/Mask	Proto	NextHop	Interface
10.1.10.0/24	Direct	192.168.100.1	vlan1
10.1.20.0/24	Static	10.1.20.1	vlan20
192.168.100.9/30	Direct	192.168.100.2	vlan1

Why does traffic from PC1 fail to reach PC2?

- A. Only static routes have been enabled
- B. The subnet mask is incorrect on the routers
- C. There is no route back from router B
- D. A default gateway setting is incorrect

Correct Answer: B

Section: (none)

Explanation

Explanation/Reference:

QUESTION 55

Refer to the Exhibit.

Exhibit: HP Comware switch configuration.

```
[Comware] vlan 100
[Comware-vlan100] quit
[Comware] vlan 200
[Comware-vlan200] quit
[Comware] interface g1/0/22
[Comware-GigabitEthernet1/0/22] port link-type trunk
[Comware-GigabitEthernet1/0/22] port trunk permit vlan 100 200
[Comware-GigabitEthernet1/0/22] quit
```

A network administrator configures the Comware switch, as shown in the exhibit. The network administrator then connects a cable from the Comware's g1/0/22 interface to port 5 on an HP ProVision switch. Which configuration will successfully establish connection for VLAN 1, 100, and 200 between the

two switches?

- A. ProVision (config) # vlan 100
ProVision (config) # vlan 200
ProVision (config) # vlan 100 tagged 5
ProVision (config) # vlan 200 tagged 5
- B. ProVision (config) # vlan 100
ProVision (config) # vlan 200
ProVision (config) # interface 5 tagged 100 200
- C. ProVision (config) # vlan 100
ProVision (config) # vlan 200
ProVision (config) # interface 5 tagged 100
ProVision (config) # interface 5 tagged 200
- D. ProVision (config) # vlan 100 200
ProVision (config) # vlan 100 200 tagged 5

Correct Answer: A

Section: (none)

Explanation

Explanation/Reference:

QUESTION 56

Which HP solution delivers automated virtual machine orchestrator, automatic synchronization of network connectivity information, and visibility to performance of wired and wireless users?

- A. Unified Wired-WLAN modules and switches
- B. Intelligent Management Center (IMC)
- C. Virtual Connect FlexFabric
- D. Intelligent Resilient Framework

Correct Answer: B

Section: (none)

Explanation

Explanation/Reference:

<http://h17007.www1.hp.com/docs/mark/4AA3-4496ENW.pdf>

QUESTION 57

Which 802.1X component seeks authentication?

- A. processee
- B. supplicant
- C. authenticatee
- D. authenticator

Correct Answer: B

Section: (none)

Explanation

Explanation/Reference:

QUESTION 58

Which management protocol is enabled, by default, on HP Provision switches?

- A. Syslog
- B. SSH
- C. SNMP
- D. NTP

Correct Answer: B

Section: (none)

Explanation

Explanation/Reference:

QUESTION 59

Which HP Comware command saves the startup configuration file to a TFTP server?

- A. startup
- B. restore
- C. backup
- D. copy

Correct Answer: C

Section: (none)

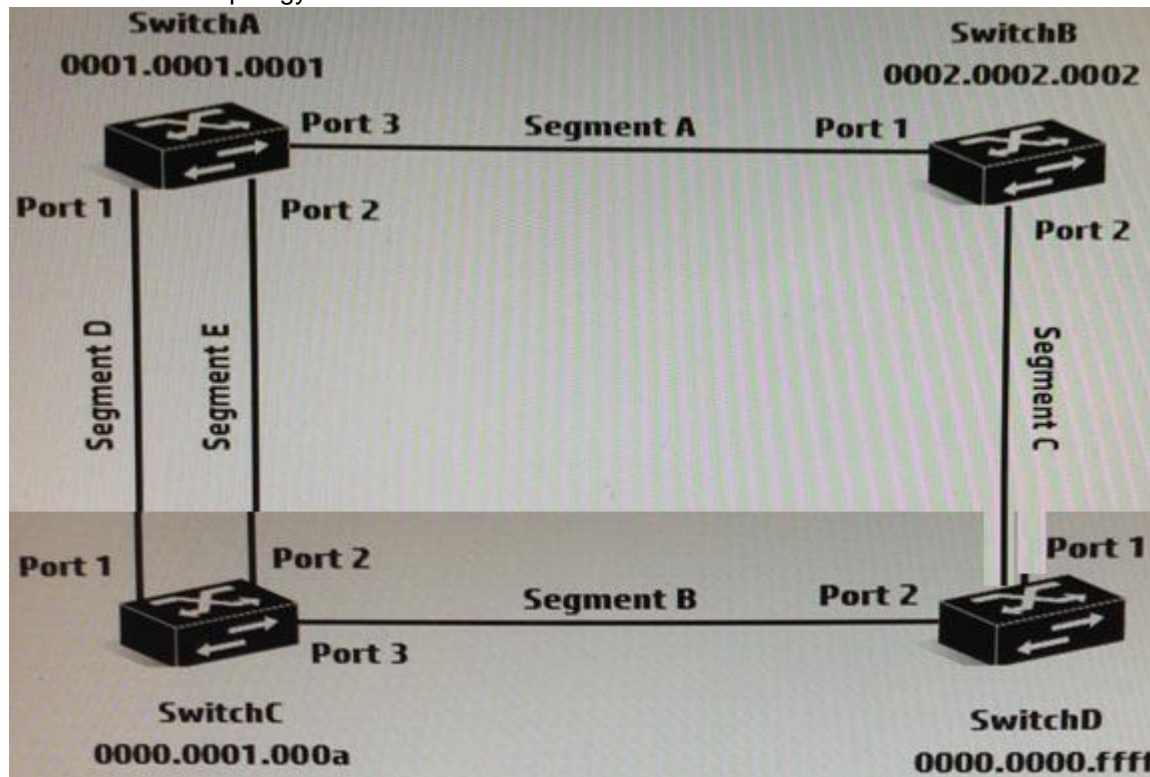
Explanation

Explanation/Reference:

QUESTION 60

Refer to the exhibit.

Exhibit: Network topology



A company has implemented a switched network based on the RSTP spanning tree protocol. Assume the following:

- All switches have the same priority
- All ports have the same cost
- All ports have the same priority

Based on this information, which answer is correct?

- A. Port 2 on SwitchC is a designated port.
- B. Port 3 on SwitchC is a designated port.
- C. Port 1 on SwitchB is a discarding port.

D. Port 1 on SwitchD is a root port.

Correct Answer: B

Section: (none)

Explanation

Explanation/Reference:

MSTP selects the device with the lowest MAC address as the root bridge, so in this case it is SwitchD. The root bridge is the only bridge in the network that does not have a root port. All other bridges receive BPDUs on at least one port.

QUESTION 61

Which type of access is considered an In-band management connection?

- A. Serial connection to Console port
- B. Dial-up to an auxiliary port
- C. SSH from a desktop to the device
- D. Telnet to an HP iLO management port

Correct Answer: C

Section: (none)

Explanation

Explanation/Reference:

QUESTION 62

Which HP Comware component allows a network administrator to adjust the logging process?

- A. SNMP management center
- B. Information center
- C. Logging process
- D. System logging center

Correct Answer: B

Section: (none)

Explanation

Explanation/Reference:

Acting as the system information hub, information center classifies and manages system information, offering a powerful support for network administrators and developers in monitoring network performance and diagnosing network problems.

The following describes the working process of information center:

QUESTION 63

What must a network administrator define on an HP Comware switch in order to implement username and passwords to protect access to the CLI?

- A. Authentication scheme
- B. Privilege levels
- C. Local authentication
- D. Super passwords

Correct Answer: C

Section: (none)

Explanation

Explanation/Reference:

Authentication fallback

If all authentication servers are unavailable, local authentication can be used.

Reference: https://h20565.www2.hp.com/portal/site/hpsc/template.BINARYPORTLET/public/kb/docDisplay/resource.process/?spf_p.tpst=kbDocDisplay_ws_BI&spf_p.rid_kbDocDisplay=docDisplayResURL&javax.portlet.begCacheTok=com.vignette.cachetoken&spf_p.rst_kbDocDisplay=wsrpresourceState%3DdocId%253Demr_na-c03536920-4%257CdocLocale%253Den_US&javax.portlet.endCacheTok=com.vignette.cachetoken

QUESTION 64

Why does HP recommended using SSH instead of Telnet for remote device management?

- A. SSH connections are established almost five times faster.
- B. SSH encrypts the data you exchange with the switch.
- C. SSH must be enabled for TFTP file transfers.
- D. SSH provides a graphical shell for GUI management.

Correct Answer: B

Section: (none)

Explanation

Explanation/Reference:

QUESTION 65

Which credential is required to validate SNMP v2c write requests?

- A. MD5 authkey
- B. AAA authentication

- C. Scheme
- D. Community string

Correct Answer: D

Section: (none)

Explanation

Explanation/Reference:

QUESTION 66

Which component of an HP Comware switch controls logging on to a syslog server?

- A. Log Parser
- B. Event Analyzer
- C. Information Center
- D. Event Log

Correct Answer: C

Section: (none)

Explanation

Explanation/Reference:

QUESTION 67

What is a key emerging standard protocol that HP Virtual Application Networks (VAN) use to implement Software-Defined Networks (SDN)?

- A. IMC
- B. OpenFlow
- C. FlexFabric
- D. OpenStack

Correct Answer: B

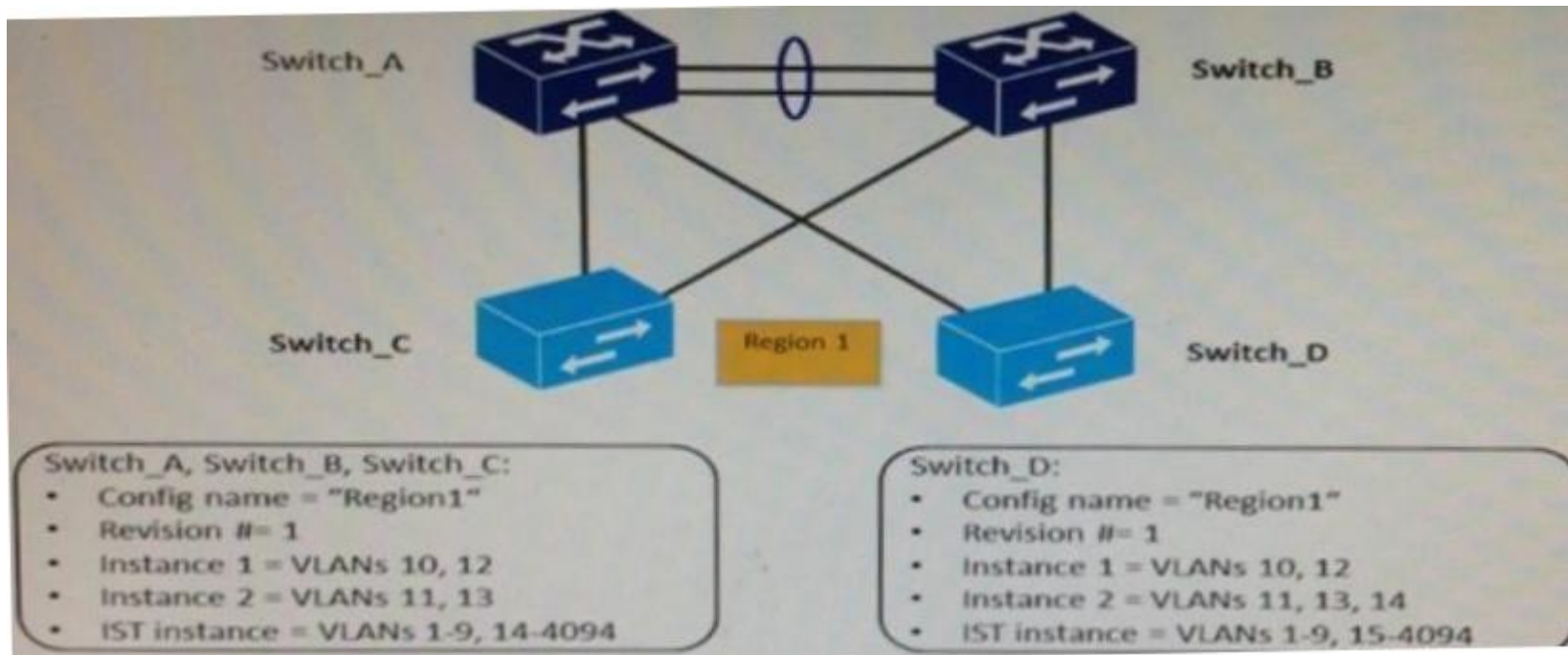
Section: (none)

Explanation

Explanation/Reference:

QUESTION 68

Refer to the exhibit.



Originally, all four switches had the same region configuration. VLAN 14 was added to Switch_D and then mapped to instance 2. How does this affect the MSTP topology?

- A. Load sharing is lost, one of the uplinks is blocked for all traffic on Switch_C and Switch_D
- B. A layer 2 loop exists and will cause sporadic connectivity issues
- C. All connectivity is lost, both uplinks are blocked on Switch_D
- D. Load sharing is lost, one of the uplinks is blocked for all traffic on Switch_D

Correct Answer: C

Section: (none)

Explanation

Explanation/Reference:

QUESTION 69

Which statement is true about spanning tree and HP Comware and HP Provision switches?

- A. A Provision switch requires the active region-configuration command to activate changes.
- B. A Provision switch uses non-standard port costs in spanning tree calculations.
- C. A Comware switch automatically auto-senses edge ports.
- D. A Comware switch uses non-standard port costs in spanning tree calculations.

Correct Answer: D

Section: (none)

Explanation

Explanation/Reference:

QUESTION 70

Hotspot Question

All OSPF routers form adjacencies with other OSPF routers in each broadcast domain. What is the correct sequence of states when forming an adjacency with any OSPF router in the broadcast domain?

Step 1

▼

Domain Static

Two-way state

Exchange state

Step 2

▼

Domain Static

Two-way state

Exchange state

Step 3

▼

Domain Static

Two-way state

Exchange state

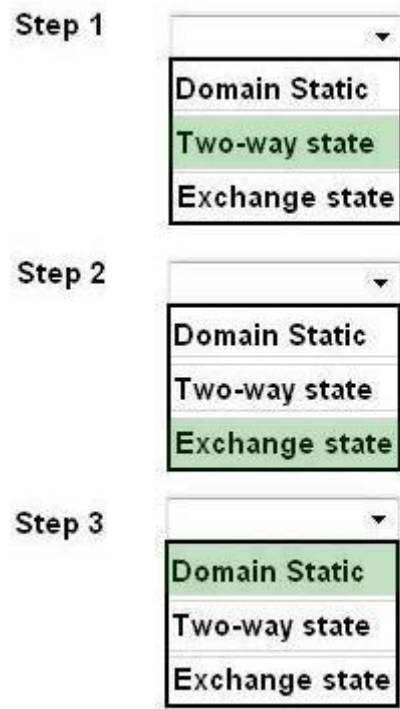
A.

Correct Answer: A

Section: (none)

Explanation

Explanation/Reference:



QUESTION 71

Which method of link aggregation do both HP ProVision and Comware switches support?

- A. Static LACP
- B. Fast Ethernet
- C. Dynamic LACP
- D. Distributed Trunking

Correct Answer: A

Section: (none)

Explanation

Explanation/Reference:

QUESTION 72

What is a valid reason to choose an 802.11a wireless implementation?

- A. It supports a large range (distance) from the AP at a given data speed
- B. It has fewer available channels than 802.11b/g, enabling easier deployment
- C. It has transmission speed higher than 802.11n
- D. It will not interface with an 802.11b/g installation.

Correct Answer: D

Section: (none)

Explanation

Explanation/Reference:

QUESTION 73

A customer has an HP ProVision switch capable of Layer 3 forwarding; however, Layer 3 forwarding is disabled. The switch has an IP address in the management VLAN, where the default gateway is 10.1.1.1, which ProVision command should the network administrator use so the ProVision switch can access the Intelligent Management Center (IMC) server in a different VLAN?

- A. IP default-gateway 10.1.1.1
- B. IP route 0.0.0.0 255.255.255.255 10.1.1.1
- C. Default-route 10.1.1.1
- D. IP route 0.0.0.0 0.0.0.0 10.1.1.1

Correct Answer: D

Section: (none)

Explanation

Explanation/Reference:

A default route is a special static route that applies to all traffic. Typically, when the router receives a packet that it does not know how to forward, it drops it. A default route allows the router to forward all such packets toward the destination most likely to be able to route them. To configure a default route, enter a route to a destination address of all zeros with an all-zero subnet mask. The all-zero subnet mask indicates to the router that a packet's IP address does not have to match any of the destination address bits in order for the route to be valid. Because the router always matches traffic to the most specific route, it will only use the default route for traffic that would otherwise be dropped. To configure the default route, move to the global configuration mode context and enter this command:

Syntax: `ip route 0.0.0.0 [0.0.0.0 | /0] <next hop A.B.C.D | forwarding interface ID> [<administrative distance>]`

The ProCurve Secure Router allows you to enter the default route in CIDR notation.

Reference: <ftp://ftp.hp.com/pub/networking/software/B-C11-Routing.pdf>

QUESTION 74

Which HP redundancy feature is supported by both HP Provision and HP Comware switches?

- A. meshed stacking
- B. distributed trunking
- C. static link aggregation
- D. dynamic LACP

Correct Answer: C

Section: (none)

Explanation

Explanation/Reference:

QUESTION 75

Which HP Comware command can a network administrator execute to view the IP routing table?

- A. display ip routing-table
- B. show ip route
- C. show ip routing-table
- D. display ip route

Correct Answer: A

Section: (none)

Explanation

Explanation/Reference:

QUESTION 76

Which command defines a default route on an HP Provision switch when routing has been enabled?

- A. ip route 0.0.0.0/0 10.1.1.1
- B. ip route 0.0.0.0/32 10.1.1.1
- C. ip route 0.0.0.0 0 10.1.1.1
- D. ip default-gateway 10.1.1.1

Correct Answer: A

Section: (none)

Explanation

Explanation/Reference: