

Lead2pass.HP0-Y30.v3

Number: HP0-Y30
Passing Score: 710
Time Limit: 120 min
File Version: 1.0



Vendor: HP

Exam Code: HP0-Y30

Exam Name: Implementing HP Networking Technologies

Sections

1. CLI
2. IP routing
3. IRF
4. Link aggregation
5. Others
6. ProCurve Manager
7. Security
8. Spanning tree protocol
9. Switch models
10. VLANs
11. Wireless

Mix-Questions**QUESTION 1**

Which A-Series switch is designed for the large data center and the enterprise core?

- A. A5820
- B. A7500
- C. A9500
- D. A12500

Correct Answer: D

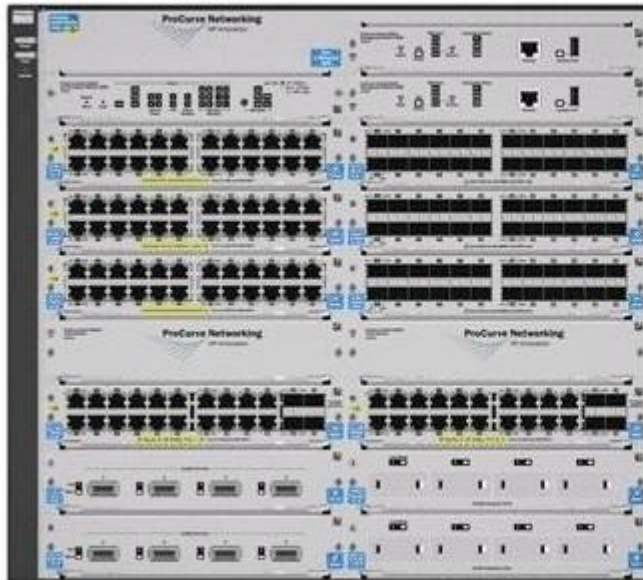
Section: Switch models

Explanation

Explanation/Reference:

QUESTION 2

In the configuration shown in the exhibit, which users can access the web management interface of the E5406 zl?



Untagged VLAN 1

Tagged VLANs 21, 22, 23



```
E8212 zl
ip routing
ip authorized-managers 10.3.21.0/24
vlan 1
    ip address 10.3.1.1/24
vlan 21
    ip address 10.3.21.1/24
vlan 22
    ip address 10.3.22.1/24
vlan 23
    ip address 10.3.23.1/24
vlan 24
    ip address 10.3.24.1/24
vlan 21
    untagged C1-C4
vlan 22
    untagged C5-C8
```

```
E5406 zl
ip default-gateway 10.3.1.1
vlan 1
    ip address 10.3.1.2/24
vlan 21
    untagged A1-A4
vlan 22
    untagged A5-A8
Vlan 23
    untagged A9-A12
```

- A. users in VLAN 1 only
- B. users in VLAN 21 only
- C. users in all VLANs directly connected to the E5406 only
- D. users in all VLANs connected to either switch

Correct Answer: D

Section: VLANs

Explanation

Explanation/Reference:

QUESTION 3

Which unencrypted protocol can be used to back up configuration files for an HP E5400 zl Series switch?

- A. SFTP
- B. SCP
- C. FTP
- D. TFTP

Correct Answer: D

Section: Others

Explanation

Explanation/Reference:

QUESTION 4

You have defined VLANs and IP interfaces on an HP E5412 zl switch. Otherwise, the switch is at default settings. What is the effect of the following command?

```
E5412(config)# spanning-tree
```

- A. MSTP is enabled globally. The switch will function as if RSTP were enabled until other MSTP parameters are defined.
- B. MSTP is enabled globally. The switch will negotiate its role in the MST region with other switches.
- C. RSTP is enabled globally. To enable MSTP, you must specify the protocol for each VLAN that will be included in the MST region.
- D. STP is enabled globally. A specific Spanning Tree Protocol must be enabled for each VLAN in the IST.

Correct Answer: A

Section: Spanning tree protocol

Explanation

Explanation/Reference:

QUESTION 5

What does the output shown in the exhibit indicate about this HP E3500-24G yl switch? (All switches in the Spanning Tree are at default settings.)

```
E3500# show spanning-tree
```

Multiple Spanning Tree (MST) Information

```
STP Enabled      : Yes
Force Version    : MSTP-operation
IST Mapped VLANs : 1-4094
Switch MAC Address : 001635-b620c0
Switch Priority   : 32768
Max Age          : 20
Max Hops         : 20
Forward Delay    : 15
```

```
Topology Change Count : 1
Time Since Last Change : 3 mins
```

```
CST Root MAC Address : 0017a4-750700
CST Root Priority      : 0
CST Root Path Cost    : 40000
CST Root Port         : 23
```

```
IST Regional Root MAC Address : 001635-b620c0
IST Regional Root Priority     : 32768
IST Regional Root Path Cost    : 0
IST Remaining Hops             : 20
```

```
Root Guard Ports :
TCN Guard Ports  :
BPDU Protected Ports :
BPDU Filtered Ports :
PST Protected Ports :
PST Filtered Ports :
```

Port	Type	Cost	Priority	State	Designated Bridge	Hello Time	PtP	Edge
1	100/1000T	200000	128	Forwarding	001635-b620c0	2	Yes	Yes
...								
23	100/1000T	20000	128	Forwarding	0019bb-aea640	2	Yes	No
24	100/1000T	Auto	128	Disabled				

```
E3500#
```

- A. Port 23 is connected to the Root Bridge.
- B. Port 23 is configured with a low Port Priority.
- C. Port 23 is connected to the Root Bridge through an intervening switch.
- D. Port 23 is connected to a switch that does not support Spanning Tree.

Correct Answer: C

Section: Spanning tree protocol
Explanation

Explanation/Reference:

QUESTION 6

You must configure Multiple Spanning Tree Protocol (MSTP) on an HP E8212 zl switch and three E5406 zl switches. What is required to ensure that all of the switches join the same MST region?

- A. The switches must be running the same software version.
- B. The switches must be configured to discard BPDUs from switches using STP or RSTP.
- C. Bridge Priorities on all switches must be configured so that each MST instance has a different Root Bridge.
- D. The switches must be configured with identical MST config-names, config-revisions, and VLAN- to-instance mappings.

Correct Answer: D

Section: Spanning tree protocol
Explanation

Explanation/Reference:
MST region

A multiple spanning tree region (MST region) consists of multiple devices in a switched network and the network segments among them. These devices have the following characteristics:

- All are MSTP-enabled
- They have the same region name
- They have the same VLAN-to-instance mapping configuration
- They have the same MSTP revision level configuration
- They are physically linked with one another

QUESTION 7

While examining switch configurations at a customer site, you notice that an edge switch serving a single office is the Root Bridge in a single-instance Spanning Tree. This has led to the development of inefficient forwarding paths because some switches are now forwarding traffic toward this switch and away from the network core. What is an accurate explanation for this finding?

- A. The two switches are configured for different Spanning Tree Protocols.
- B. The core switch is configured to support edge ports.
- C. The edge switch is running a newer software version than the core switch.
- D. The core switch is configured with a higher Bridge Priority value than the edge switch.

Correct Answer: D

Section: Spanning tree protocol

Explanation

Explanation/Reference:

The priority of a device determines whether it can be elected as the root bridge of a spanning tree. A lower value indicates a higher priority.

QUESTION 8

After configuring MSTP on HP switches at a customer site, you learn that users in VLAN 44 can no longer access a server that was available immediately before Spanning Tree was enabled. Which statement explains this situation?

- A. The server and the users are connected to switches in different MST regions.
- B. The edge switches that support users in VLAN 44 do not support MSTP.
- C. There is a break in the VLAN 44 forwarding path.
- D. The switches are not all configured with the same Spanning Tree Protocol.

Correct Answer: C

Section: Spanning tree protocol

Explanation

Explanation/Reference:

QUESTION 9

The output of show spanning-tree instance 4 on three HP E5406 zl Series switches indicates that all three switches are the Root of MST instance 4. What is a possible explanation of this result?

- A. The switches have identical Bridge Priorities.
- B. The switches have different MST configuration revisions.
- C. The switches are running different software versions.
- D. The switches have identical Port Priorities for ports associated with the instance.

Correct Answer: B

Section: Spanning tree protocol

Explanation

Explanation/Reference:

MST region

A multiple spanning tree region (MST region) consists of multiple devices in a switched network and the network segments among them. These devices have the following characteristics:

- All are MSTP-enabled
- They have the same region name
- They have the same VLAN-to-instance mapping configuration
- They have the same MSTP **revision level** configuration
- They are physically linked with one another

QUESTION 10

What is the process for installing an HP PCM+ Remote Client?

- A. add the workstation's IP address to the update list on a PCM+ Remote Agent
- B. download software from the PCM+ server
- C. download a client installer from the HP website
- D. select "Client" instead of "Server" in PCM+ installer

Correct Answer: B

Section: ProCurve Manager

Explanation

Explanation/Reference:

Installing Remote Clients

...

- Start a Web browser such as Microsoft Internet Explorer on the computer where the Client will be installed, and enter the IP address of the PCM Server followed by a colon and the port ID 8040. For example, if the IP address of the PCM Server is 10.15.20.25, enter the URL `http://10.15.20.25:8040`
- In the HP ProCurve Manager v3 Available Downloads window, *click Download the PCM remote client*

QUESTION 11

Which plug-ins are available to enhance HP PCM+ functionality? (Select three.)

- A. Device Inventory Manager
- B. Network Immunity Manager
- C. Identity Driven Manager
- D. Access Control Manager
- E. Storage Network Manager
- F. Mobility Manager
- G. Custom Device Import Manager

Correct Answer: BCF

Section: ProCurve Manager

Explanation

Explanation/Reference:

- **Identity Driven Manager (IDM)** : Add-on Module for PCM+; contains Intranet Network Access Security using 802.1X; compatible to Microsoft Network Access Protection (NAP) since Version IDM V2.3.
- **Network Immunity Manager (NIM)** : Add-On Module for PCM+ v2.2 and above; contains Intranet Intrusion Detection and Network Behavior Anomaly Detection (NBAD) using sFlow.
- **ProCurve Mobility Manager (PMM)** : Add-on Module for PCM+; contains Element Management for ProCurve Access Points (420/520/530) starting from Version PMM V1; WESM Modules and Radio Ports are supported since Version PMM V2. Since PMM v3, the MSM Access Points and Controllers are now supported.

QUESTION 12

Which features are available after upgrading from HP PCM to HP PCM+? (Select three.)

- A. automatic discovery
- B. VLAN management
- C. device monitoring
- D. traffic monitoring
- E. scheduled software updates
- F. network topology mapping

Correct Answer: BDE

Section: ProCurve Manager

Explanation

Explanation/Reference:

HP ProCurve Manager Plus Features

The ProCurve Manager Plus (PCM+) package includes all of the functionality of PCM, along with advanced functionality that can dramatically improve the performance of an IT organization.

- *Network Traffic Analysis*
- *VLAN Management*
- Configuration Management
- Group and Policy Management
- *Device firmware updates*

QUESTION 13

At a customer site, an HP PCM+ server does not automatically discover any manageable devices except those on the subnet where the server resides.

Which configuration step is necessary to enable wider discovery?

- A. Define a custom group for each subnet with discoverable devices.
- B. Update the SNMP community names on all undiscovered devices.
- C. Add all subnets with discoverable devices to the Managed Subnets list.
- D. Install a PCM+ Remote Agent on all subnets with discoverable devices.

Correct Answer: C

Section: ProCurve Manager

Explanation

Explanation/Reference:

Initially, discovery works only for devices on the same subnet as the Discovery starting device. Once you have started PCM, **you can add subnets and devices on your network to the Managed subnets list.**

QUESTION 14

In HP PCM+, which privilege is only available to users with the Administrator profile?

- A. manage all devices
- B. manage software updates
- C. manage agents
- D. manage users

Correct Answer: D

Section: ProCurve Manager

Explanation

Explanation/Reference:

manage users

QUESTION 15

Port B24 on an HP E5400 zl Series switch is a tagged member of VLAN 101. Ports B21, B22, and B23 are at default settings. What is the result of the following command?

```
Switch(config)# trunk B21-B24 trk1
```

- A. The trunk will automatically become a member of VLAN 101 and of all other VLANs configured for ports B21 through B24.
- B. Port B24 will not be included in the trunk until the trunk is made a tagged member of VLAN 101.

VCE To PDF - Free Practice Exam

- C. Port B24 will not forward traffic for VLAN 101 because the trunk has not been made a member of VLAN 101.
- D. Port B24 will continue to forward traffic for VLAN 101, but other ports in the trunk will not.

Correct Answer: C

Section: VLANs

Explanation

Explanation/Reference:

By default, a trunk port carries **only VLAN 1**.

QUESTION 16

What is the effect of the following command entered at the CLI of an HP E5400 zl Series switch at default settings?

```
Switch(config)# trunk a20-a24 trk4
```

- A. A static LACP link is defined.
- B. A trunk is defined with no protocol.
- C. trk4 can carry traffic for multiple VLANs.
- D. A dynamic LACP link is defined.

Correct Answer: B

Section: VLANs

Explanation

Explanation/Reference:

• •

```
sw(config)# trunk 21-25 trk1 trunk
```

,

(, trk1).

QUESTION 17

What is the default protocol when a link aggregation group is defined on an HP A-Series switch?

- A. no protocol
- B. static LACP
- C. dynamic LACP
- D. HP Port Trunking

Correct Answer: A
Section: Link aggregation
Explanation

Explanation/Reference:

QUESTION 18

By default, which criteria are used for load-sharing of Layer 2 traffic over aggregated links configured on HP A-Series switches?

- A. LACP flow classifiers
- B. ingress port
- C. source and destination MAC address
- D. source and destination IP address

Correct Answer: C
Section: Link aggregation
Explanation

Explanation/Reference:

QUESTION 19

What is the effect of the following command, entered at the CLI of an HP A9500 switch?

```
[A9500-GigabitEthernet2/0/1] stp root-protection
```

- A. The switch will listen for Spanning Tree BPDUs only on port 2/0/1.
- B. The switch will maintain 2/0/1 as its Root Port regardless of changes in the Spanning Tree topology.
- C. The switch will transition instantly to Root if it stops receiving BPDUs through port 2/0/1.
- D. The switch will not allow another switch to promote itself as Root on port 2/0/1.

Correct Answer: D
Section: Spanning tree protocol
Explanation

Explanation/Reference:

QUESTION 20

You must configure link aggregation on an HP A-Series switch. Which view should you enter to create the link aggregation group?

- A. user
- B. LAG
- C. system
- D. interface

Correct Answer: C

Section: Link aggregation

Explanation

Explanation/Reference:

Configuring a dynamic aggregation group

1. Enter system view *system-view*

...

Configuring a static aggregation group

1. Enter system view *system-view*

...

QUESTION 21

What is the default Spanning Tree Protocol on HP A-Series switches?

- A. STP
- B. PVST
- C. MSTP
- D. RSTP

Correct Answer: C

Section: Spanning tree protocol

Explanation

Explanation/Reference:

QUESTION 22

An HP A-Series switch includes the following configuration:

```
stp region-configuration
region-name hp-enterprise
instance 1 vlan 10 to 99
instance 2 vlan 100 to 199
revision-level 0
active region-configuration
```

Which VLANs are in instance 0?

- A. no VLANs
- B. default VLAN
- C. VLANs 10 to 199
- D. all other VLANs defined on the switch

Correct Answer: D

Section: Spanning tree protocol

Explanation

Explanation/Reference:

QUESTION 23

The front-panel security settings on an HP E5400 zl Series switch are at default. How can you gain access to the CLI of the switch if the manager and operator passwords have been lost?

- A. Press the Reset button on the switch's front panel and hold it down until the switch restarts.
- B. Power cycle the switch while holding down the Reset button.
- C. Establish a console session and clear all passwords using the setup menu.
- D. Press the Clear button on the switch's front panel and hold it down for three seconds or more.

Correct Answer: D

Section: Security

Explanation

Explanation/Reference:

If You Lose the Password

If you lose the passwords, you can clear them by pressing the Clear button on the front of the switch. This action deletes all password and user name protection from all of the switch's interfaces.

QUESTION 24

A customer requires SFTP to transfer configuration files to an HP E5400 zl Series switch. What must be enabled on the switches to fulfill this requirement?

- A. SSH
- B. FTP
- C. HTTPS
- D. IP routing

Correct Answer: A

Section: Security

Explanation

Explanation/Reference:

You can use SFTP just as you would TFTP to transfer files to and from the switch, but with SFTP your file transfers are encrypted and require authentication, so they are more secure than they would be using TFTP. SFTP works only with SSH version 2 (SSH v2).

QUESTION 25

You must configure an HP switch for deployment at a site that requires all management sessions to be encrypted. The site administrators will use the CLI for configuration and management. Which management protocol must be implemented to meet these requirements?

- A. Telnet
- B. Secure Socket Shell (SSH)
- C. Secure HTTP (HTTPS)
- D. Simple Network Management Protocol (SNMP)

Correct Answer: B

Section: Security

Explanation

Explanation/Reference:**QUESTION 26**

You must implement an SNMPv2c solution that will use standard SNMP-Set messages to configure HP switches. Which property must match on the SNMP server and the switches?

- A. manager password
- B. read-only community string
- C. shared secret
- D. read-write community string

Correct Answer: D

Section: Others

Explanation

Explanation/Reference:

QUESTION 27

Which management interfaces enable an administrator to configure a username for access to the manager privilege level on an HP E5400 zl Series switch? (Select two.)

- A. menu interface
- B. CLI
- C. setup interface
- D. web interface
- E. Management Interface Wizard

Correct Answer: BD

Section: Others

Explanation

Explanation/Reference:

QUESTION 28

How does the distributed link aggregation technology used in IRF provide link redundancy?

- A. by enabling the Master to auto-select new forwarding paths if a link fails
- B. by enabling virtual link load balancing across all known paths
- C. by enabling aggregation groups to include ports on multiple switches
- D. by enabling ports in an aggregation group to be placed in backup state

Correct Answer: C

Section: IRF

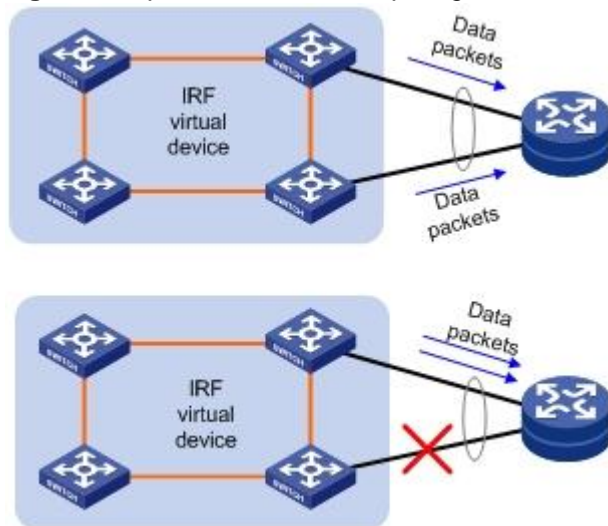
Explanation

Explanation/Reference:

Uplink/Downlink Backup

IRF uses a distributed aggregation technology to implement uplink/downlink backup. The traditional aggregation technology aggregates multiple physical Ethernet ports (known as member ports) to implement link backup. However, it does not have a backup mechanism for a single-point failure. The new distributed aggregation technology supported by IRF adds the physical Ethernet ports on different devices to an aggregation port group. Even if the device where some ports reside fails, the aggregation link will not become invalid. Other member devices that work normally will manage and maintain the other aggregation ports. This is of great importance to the network environments with core switching systems and having high-quality service requirements. It not only solves the problem of single-point failure of aggregation devices, but also increases availability of the entire network. As shown in Figure 11, the traffic that goes to the core network is distributed evenly on the aggregation links. When an aggregation link fails, the distributed link aggregation technology can automatically distribute the traffic to other aggregation links to implement link backup and increase network reliability.

Figure 11 Uplink/downlink backup diagram



http://www.h3c.com/portal/Products___Solutions/Technology/IRF/Technology_White_Paper/200901/624932_57_0.htm

QUESTION 29

What is indicated by the 2 in this prompt from an HP A5800 switch?

[Switch-Gigabit-Ethernet2/0/1]

- A. IRF member ID
- B. switch module slot
- C. port group
- D. link aggregation group

Correct Answer: A

Section: IRF

Explanation

Explanation/Reference:

HP 5820X & 5800 Switch Series IRF Configuration Guide
Interface naming conventions

The interfaces are named in the format of *member ID/subslot number/interface serial number*, where

- The member ID identifies the IRF member switch on which the interface resides. If the switch is standalone, the member ID defaults to 1. If the standalone switch was once an IRF member switch, it uses the same member ID as it was in the IRF virtual device.
- The subslot number is the number of the slot in which the interface card resides. On the 5800 series or 5820X series, the subslot for the fixed ports on the front panel is numbered 0. If the switch has one expansion slot, the number of the slot is 1. If the switch has two expansion slots, their numbers are 1 and 2, from left to right.
- The interface serial number depends on the number of interfaces provided by the switch. Look at the number on the silkscreen on the interface card for the number of supported interfaces.

For example, on the standalone switch Sysname, GigabitEthernet 1/0/1 represents the first fixed port on the front panel. Set its link type to trunk:

```
<Sysname> system-view
```

```
[Sysname] interface gigabitethernet 1/0/1
```

```
[Sysname-GigabitEthernet1/0/1] port link-type trunk
```

For another example, on the IRF virtual device Master, GigabitEthernet 3/0/1 represents the first fixed port on the front panel of member switch 3. Set its link type to trunk:

```
<Master> system-view
```

```
[Master] interface gigabitethernet 3/0/1
```

```
[Master-GigabitEthernet3/0/1] port link-type trunk
```

<http://bizsupport1.austin.hp.com/bc/docs/support/SupportManual/c02648772/c02648772.pdf>

QUESTION 30

At a customer site, you enter the following command into the CLI of an HP A-Series switch:

```
stp bpdu-protection
```

Which BPDUs will the switch discard?

- A. BPDUs from switches running legacy STP
- B. BPDUs from switches running PVST+
- C. BPDUs received by edge ports
- D. BPDUs from outside its MST region

Correct Answer: C

Section: Spanning tree protocol

Explanation

Explanation/Reference:

BPDU protection is a security feature designed to protect the active STP topology by preventing spoofed BPDU packets from entering the STP domain. In a typical implementation, BPDU protection would be applied to edge ports connected to end user devices that do not run STP. If STP BPDU packets are received on a protected port, the feature will disable that port and alert the network manager via an SNMP trap as shown.

QUESTION 31

What is the default status of LLDP on an HP E5400 zl Series switch?

- A. enabled for VLAN 1
- B. enabled globally
- C. enabled for ports that receive LLDP advertisements
- D. disabled

Correct Answer: B

Section: Others

Explanation

Explanation/Reference:

Enable or Disable LLDP on the Switch.

In the default configuration, LLDP *is globally enabled* on the switch. To prevent transmission or receipt of LLDP traffic, you can disable LLDP operation

QUESTION 32

The two switches in the exhibit are directly connected and have been pre-configured for MSTP. When Spanning Tree is enabled on the switches, how will they converge?

```
E3500(config)# show spanning-tree mst-config
```

MST Configuration Identifier Information

```
MST Configuration Name : HP
MST Configuration Revision : 3
MST Configuration Digest : 0x176D6A3A752AB587C041EDD84C3DB808
```

```
IST Mapped VLANs : 1-20,27-30,37-4094
```

Instance ID	Mapped VLANs
1	21-26
2	31-36

```
E5406(config)# show spanning-tree mst-config
```

MST Configuration Identifier Information

```
MST Configuration Name : HP
MST Configuration Revision : 3
MST Configuration Digest : 0x31309626E290E89AA127D2DDCFD35407
```

```
IST Mapped VLANs : 1-20,27-29,37-4094
```

Instance ID	Mapped VLANs
1	21-26
2	30-36

- A. The switches will not be able to exchange BPDUs.
- B. E5406 will become Root Bridge for both instances.
- C. The switches will be in different MST regions.
- D. E3500 will become the Root Bridge for both instances.

Correct Answer: C

Section: Spanning tree protocol

Explanation

Explanation/Reference:

MST region

A multiple spanning tree region (MST region) consists of multiple devices in a switched network and the network segments among them. These devices have the following characteristics:

- All are MSTP-enabled
- They have the same region name

- They have the same VLAN-to-instance mapping configuration
- They have the same MSTP revision level configuration
- They are physically linked with one another

QUESTION 33

You have defined VLAN 5 and VLAN 6 on an HP E5406 zl switch. You have added four ports to each VLAN as untagged members.

All other switch settings are at defaults. What must you do to enable communications between hosts in the two VLANs?

```
E5406(config)# show ip
```

Internet <IP> Service

IP Routing : Disabled

Default Gateway :
Default TTL : 64
Arp Age : 20
Domain Suffix :
DNS server :

VLAN	IP Config	IP Address	Subnet Mask	Proxy ARP Std	Proxy ARP Local
DEFAULT_VLAN	DHCP/Bootp				
VLAN5	Manual	192.168.5.1	255.255.255.0	No	No
VLAN6	Manual	192.168.6.1	255.255.255.0	No	No

- A. Define a VLAN 1 IP address.
- B. Enable IP routing globally.
- C. Define a default gateway for the switch.
- D. Remove all eight ports from the default VLAN.

Correct Answer: B

Section: VLANs

Explanation

Explanation/Reference:

QUESTION 34

Which type of port is typically used to support end users on an A-Series switch?

- A. trunk
- B. access
- C. aggregated
- D. hybrid

Correct Answer: B

Section: VLANs

Explanation

Explanation/Reference:

QUESTION 35

What is a fat Access Point?

- A. an AP that has no intelligence and requires a wireless controller
- B. an AP that can provide WLAN services without a controller
- C. an AP that can be deployed autonomously or with a controller
- D. an AP that provides some intelligence under the management of a controller

Correct Answer: B

Section: Wireless

Explanation

Explanation/Reference:

- A FAT AP provides all authentication, connection management, and encryption in itself.
- A Thin AP delegates all of these functions to an Access Controller.
- A FIT AP is a mix of the two - it handles encryption, while delegating connection management and authentication to an Access Controller.

QUESTION 36

Which action will the HP A-Series switch shown in the exhibit take when an untagged packet is received on port GigabitEthernet 2/0/2?

GigabitEthernet2/0/2 current state: UP

.
.
.

The Maximum Frame Length is 1522

Broadcast MAX-pps: 3000

Unicast MAX-ratio: 100%

Multicast MAX-ratio: 100%

Forbid jumbo frame to pass

PVID: 102

Mdi type: auto

Link delay is 0(sec)

Port link-type: trunk

VLAN passing : 1(default vlan), 100

VLAN permitted: 1(default vlan), 100-101

Trunk port encapsulation: IEEE 802.1q

.
.
.

- A. It will forward the packet on VLAN 100.
- B. It will discard the packet.
- C. It will forward the packet on VLAN 1.
- D. It will forward the packet on VLAN 102.

Correct Answer: D

Section: VLANs

Explanation

Explanation/Reference:

QUESTION 37

How is the first Telnet interface for A-Series switches identified in the CLI?

- A. interface tty 0
- B. interface aux 0
- C. interface vty 0
- D. interface console 0

Correct Answer: C

Section: CLI

Explanation

Explanation/Reference:

QUESTION 38

Which Spanning Tree Protocol is enabled when the following command is entered at the CLI of an HP E5412 zl switch at default settings?

```
E5412(config)# spanning-tree
```

- A. STP
- B. PVST
- C. MSTP
- D. RSTP

Correct Answer: C

Section: Spanning tree protocol

Explanation

Explanation/Reference:

QUESTION 39

You must define an IP interface associated with VLAN 5 on an HP E5400 zl Series switch. Which parameters are required? (Select two.)

- A. routing protocol
- B. default gateway
- C. IP address
- D. domain name
- E. subnet mask

Correct Answer: CE

Section: VLANs

Explanation

Explanation/Reference:

QUESTION 40

Which privilege level is indicated by the following prompt at the CLI of an HP E5400 zl Series switch? Switch>

- A. global configuration
- B. operator
- C. manager
- D. super user

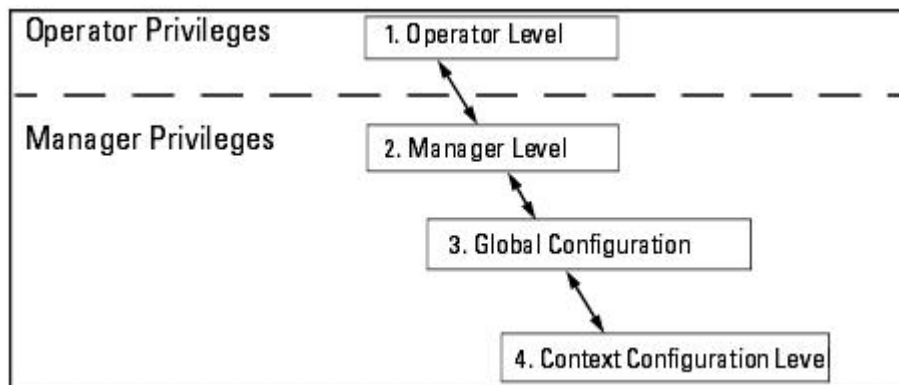
Correct Answer: B

Section: CLI

Explanation

Explanation/Reference:

For HP E-series switches:



Operator level:

At the Operator level you can examine the current configuration and move between interfaces without being able to change the configuration. A ">" character delimits the Operator-level prompt.

For example: *ProCurve>*

Manager level:

Provides all Operator level privileges plus the ability to perform system-level actions that do not require saving changes to the system configuration file. The prompt for the Manager level contains only the system name and the "#" delimiter. To select this level, enter the **enable** command at the Operator prompt and enter the Manager password, when prompted.

For example: *ProCurve#*

Global Configuration:

Provides all Operator and Manager level privileges, and enables you to make configuration changes to any of the switch's software features. The prompt for the Global Configuration level includes the system name and "(config)". To select this level, enter the **config** command at the Manager prompt.

For example: *ProCurve(config)#*

Context Configuration:

Provides all Operator and Manager privileges, and enables you to make configuration changes in a specific context, such as one or more ports or a VLAN. The prompt for the Context Configuration level includes the system name and the selected context.

For example: *ProCurve(eth-1)#*

QUESTION 41

You have configured a static LACP port trunk that includes ports D1-D4 on an HP E8212 zl switch. You have added the trunk to VLAN 23 as a tagged member. No other ports are tagged members of this VLAN. You have verified that the trunk configuration on the switch on the other side of the trunk is correct. How will the switch handle broadcast traffic destined for VLAN 23?

- A. It will flood it through one of the aggregated ports.
- B. It will flood it through ports D1 and D2, leaving ports D3 and D4 available for unicast traffic.

- C. It will flood the traffic through ports selected during negotiation with the other switch.
- D. It will flood it through all aggregated ports.

Correct Answer: A

Section: VLANs

Explanation

Explanation/Reference:

/ (SA/DA). MAC- SA/DA

QUESTION 42

Which A-Series CLI features are available to users with Monitor (1) level privileges but not to users with Visit (0) level privileges? (Select two.)

- A. save configuration
- B. Telnet client
- C. debugging
- D. traceroute
- E. display port settings

Correct Answer: CE

Section: CLI

Explanation

Explanation/Reference:

Saving the running configuration:

Task	Command	Remarks
Save the current configuration to the specified file, but the configuration file will not be set as the file for the next startup.	<code>save fileurl</code>	Required.
Save the current configuration to the root directory of the storage medium and specify the file as the startup configuration file that is used at the next system startup.	<code>save [safely] [backup main] [force]</code>	Use either command. Available in any view.

Default command levels on HP A-series:

Level	Privilege	Description
0	Visit	<p>Involves commands for network diagnosis and commands for accessing an external device. Configuration of commands at this level cannot survive a device restart. Upon device restart, the commands at this level will be restored to the default settings.</p> <p>Commands at this level include ping, tracert, telnet, and ssh2.</p>
1	Monitor	<p>Involves commands for system maintenance and service fault diagnosis. Commands at this level are not saved after being configured. After the switch is restarted, the commands at this level will be restored to the default settings.</p> <p>Commands at this level include debugging, terminal, refresh, and send.</p>
2	System	<p>Provides service configuration commands, including routing configuration commands and commands for configuring services at different network levels.</p> <p>By default, commands at this level include all configuration commands except for those at manage level.</p>
3	Manage	<p>Involves commands that influence the basic operation of the system and commands for configuring system support modules.</p> <p>By default, commands at this level involve the configuration commands of file system, FTP, TFTP, Xmodem download, user management, level setting, and parameter settings within a system (which are not defined by any protocols or RFCs).</p>

QUESTION 43

{Incomplete: characters/words missing!}

You are configuring device access security on an HP E5400]...
 an operator password to be stored on the switch? (Select t]...

- A. command line interface
- B. setup interface
- C. Management Interface Wizard
- D. menu interface
- E. web interface

Correct Answer: ADE

Section: Security

Explanation**Explanation/Reference:**

Primarily, A & E.
but answers are true

QUESTION 44

Which protocols are classified as Interior Gateway Protocols (IGP)?

- A. RIP
- B. BGP
- C. MPLS
- D. OSPF
- E. IGMP

Correct Answer: AD

Section: IP routing

Explanation**Explanation/Reference:****QUESTION 45**

You are configuring a brand new A5120 SI switch. You would like to enhance the security on the switch by configuring an administration password that will be stored in encrypted form. Which CLI command will configure an administration level 3 password of "pass3" on the switch?

- A. super password level 3 cipher pass3
- B. super 3 pass3
- C. command-privilege level 3 password pass3 cipher
- D. set password level 3 pass3

Correct Answer: A

Section: Security

Explanation**Explanation/Reference:**

```
super password [ level  
user-level ] { simple | cipher }  
password
```

Required if the authentication mode is set to **local** (specify the **local** keyword when setting the authentication mode).

By default, no privilege level switching password is configured.

If no user privilege level is specified when you configure the password for switching the user privilege level with the **super password** command, the user privilege level defaults to 3.

QUESTION 46

You are configuring a brand new A5120 SI switch. You have configured SSH on the switch. You are connected through a console cable and would like to allow remote access only through the SSH protocol. Which command should you use?

- A. user-interface ssh 0 4
- B. authentication mode ssh
- C. protocol inbound ssh
- D. enable ssh

Correct Answer: C

Section: CLI

Explanation

Explanation/Reference:

QUESTION 47

How is the first Telnet interface for A-Series switches identified in the CLI?

- A. interface vty 0
- B. interface console 0
- C. interface aux 0
- D. interface tty 0

Correct Answer: A

Section: Others

Explanation

Explanation/Reference:**QUESTION 48**

What is the default IRF member ID for an HP A-Series switch?

- A. 0
- B. 1
- C. 2
- D. auto-assigned

Correct Answer: B

Section: IRF

Explanation

Explanation/Reference:

HP 5820X & 5800 Switch Series IRF Configuration Guide
Changing the IRF member ID of a switch

The member ID of a switch defaults to 1.

<http://bizsupport1.austin.hp.com/bc/docs/support/SupportManual/c02648772/c02648772.pdf>

QUESTION 49

Which steps are necessary to configure MSTP on A-Series switches and make them compliant with industry standards? (Select four.)

- A. Activate the MSTP configuration.
- B. Configure all uplinks as non-edge ports.
- C. Enable spanning tree protocol.
- D. Configure the 802.1x switch mode.
- E. Configure default VLAN for BPDU traffic.
- F. Change path-cost standard to 802.1t.
- G. Configure MSTP region parameters on each switch.

Correct Answer: ABCG

Section: Spanning tree protocol

Explanation

Explanation/Reference:

- IEEE 802.1X defines the encapsulation of the Extensible Authentication Protocol (EAP) over IEEE 802[1][2] which is known as "EAP over LAN" or

EAPOL.

- 802.1t is part of 802.1d (Spanning tree protocol)
- To reduce the possibility of topology instability caused by configuration, MSTP will not immediately launch a new spanning tree calculation process when processing MST region-related configurations; instead, such configurations will take effect **only after you activate the MST region-related parameters using the active region-configuration command, or enable MSTP using the stp enable command in the case that MSTP is not enabled.**

QUESTION 50

An A5120 SI switch has gone down. You have a spare A5120 SI switch to put in its place. The spare was used temporarily at another location several months earlier. You need to reset the spare switch to the factory default configuration before preparing it to replace the failed switch.

Which command and command prompt will reset the switch to the factory default configuration?

- A. <Switch> reset saved-configuration
- B. [Switch] reset saved-configuration
- C. [Switch] reset startup-config
- D. <Switch> write erase

Correct Answer: A

Section: CLI

Explanation

Explanation/Reference:

Deleting a startup configuration file for the next startup

You can delete a startup configuration file to be used at the next startup. You can choose to delete either the main, the backup, or both. If the device has only one startup configuration to be used at the next startup, the system only sets the startup configuration file to NULL.

You may need to delete a startup configuration file to be used at the next startup for one of the following reasons:

- After upgrading system software, the existing startup configuration files do not match the new system software.
- Startup configuration files are corrupted (often caused by loading a wrong configuration file).

With startup configuration files deleted, the devices use factory defaults at the next startup.

To delete a startup configuration file to be used at the next startup:



CAUTION:

This command permanently deletes startup configuration files to be used at the next startup from the device. Use it with caution.

Task	Command	Remarks
Delete a startup configuration file to be used at the next startup from the storage medium.	reset saved-configuration [backup main]	Required. Available in user view.

QUESTION 51

The network manager for a medium-size business. You are on the phone with HP technical support about an issue with an A series switch. The support engineer has asked you for the software revision running on the switch.

Which command and command prompt will display the current software version on the switch?

- A. Switch> display software
- B. Switch> display switch software
- C. Switch> display version
- D. Switch> display flash version

Correct Answer: C

Section: CLI

Explanation

Explanation/Reference:

Task	Command	Remarks
Display system version information.	display version [{ begin exclude include } <i>regular-expression</i>]	

QUESTION 52

What is the effect of the following command entered at the CLI of an HP E3500 zl switch?

```
E3500(vlan-44)# interface 23
```

- A. The CLI displays the status of port 23.
- B. Port 23 becomes a member of VLAN 44.
- C. Port 23 is enabled.
- D. The CLI enters the configuration context for port 23.

Correct Answer: D

Section: CLI

Explanation

Explanation/Reference:

QUESTION 53

What is the effect of the following command entered at the CLI of an HP E5400 zl Series switch at factory default settings?

```
Switch# exit
```

- A. The user is logged out of the console.
- B. The privilege level moves from manager to operator.
- C. Unsaved configuration changes are deleted.
- D. The user exits from configuration mode.

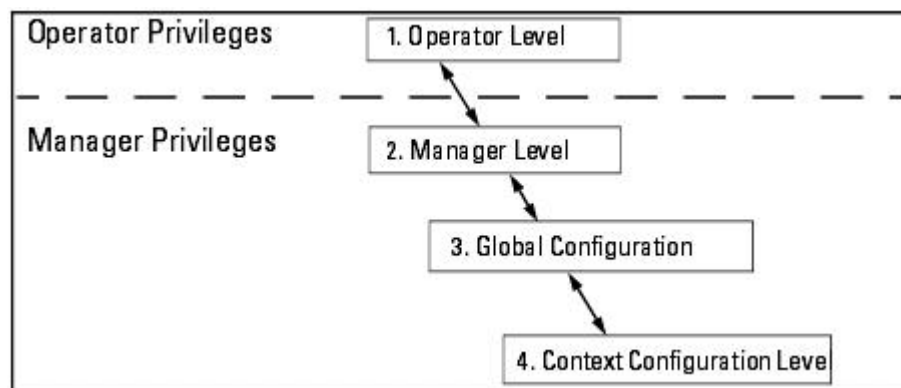
Correct Answer: B

Section: CLI

Explanation

Explanation/Reference:

For HP E-series switches:



Operator level:

At the Operator level you can examine the current configuration and move between interfaces without being able to change the configuration. A ">" character delimits the Operator-level prompt.

For example: *ProCurve>*

Manager level:

Provides all Operator level privileges plus the ability to perform system-level actions that do not require saving changes to the system configuration file. The prompt for the Manager level contains only the system name and the "#" delimiter. To select this level, enter the **enable** command at the Operator prompt and enter the Manager password, when prompted.

For example: *ProCurve#*

Global Configuration:

Provides all Operator and Manager level privileges, and enables you to make configuration changes to any of the switch's software features. The prompt for the Global Configuration level includes the system name and "(config)". To select this level, enter the **config** command at the Manager prompt.

For example: *ProCurve(config)#*

Context Configuration:

Provides all Operator and Manager privileges, and enables you to make configuration changes in a specific context, such as one or more ports or a VLAN. The prompt for the Context Configuration level includes the system name and the selected context.

For example: *ProCurve(eth-1)#*

QUESTION 54

You must define a hostname on an HP E5400 zl Series switch. Which configuration context must you enter to perform this task?

- A. manager
- B. system
- C. administrator
- D. global configuration

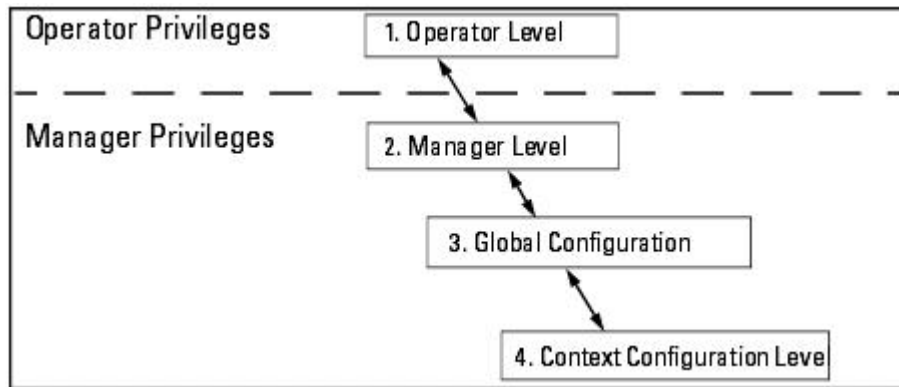
Correct Answer: D

Section: CLI

Explanation

Explanation/Reference:

For HP E-series switches:



Operator level:

At the Operator level you can examine the current configuration and move between interfaces without being able to change the configuration. A ">" character delimits the Operator-level prompt.

For example: *ProCurve>*

Manager level:

Provides all Operator level privileges plus the ability to perform system-level actions that do not require saving changes to the system configuration file. The prompt for the Manager level contains only the system name and the "#" delimiter. To select this level, enter the **enable** command at the Operator prompt and enter the Manager password, when prompted.

For example: *ProCurve#*

Global Configuration:

Provides all Operator and Manager level privileges, and enables you to make configuration changes to any of the switch's software features. The prompt

for the Global Configuration level includes the system name and “(config)”. To select this level, enter the **config** command at the Manager prompt.
For example: *ProCurve(config)#*

Context Configuration:

Provides all Operator and Manager privileges, and enables you to make configuration changes in a specific context, such as one or more ports or a VLAN. The prompt for the Context Configuration level includes the system name and the selected context.
For example: *ProCurve(eth-1)#*

QUESTION 55

You have entered the following command at the CLI of an HP E5400 zl Series switch.

```
Switch(vlan-1)# ip address 192.168.1.225/24
```

The switch's other VLAN and IP parameters are at factory defaults. While testing this configuration, you find that the switch cannot ping a server located at 192.168.2.22. You have confirmed the server is up and available. This server is located in a data center not directly connected to your switch.

What must you configure on the switch to enable connectivity between these two devices?

- A. Add a default gateway.
- B. Modify the IP address to 192.168.1.225/26.
- C. Enable IP routing.
- D. Add the server to allowed hosts list.

Correct Answer: A

Section: VLANs

Explanation

Explanation/Reference:

QUESTION 56

Which HP E-Series switch models are fixed-port switches? (Select two.)

- A. E8212 zl
- B. E4204 vl
- C. E6600-24G
- D. E5406 zl
- E. E3500-48G yl

Correct Answer: CE

Section: Switch models

Explanation

Explanation/Reference:

QUESTION 57

What is the effect of the following command entered at the CLI of an HP E5400 zl Series switch?

```
Switch(vlan-100)# end
```

- A. The CLI displays the Operator prompt.
- B. The CLI displays the Manager prompt.
- C. VLAN 100 is deleted from the switch.
- D. The CLI displays the global configuration prompt.

Correct Answer: B

Section: CLI

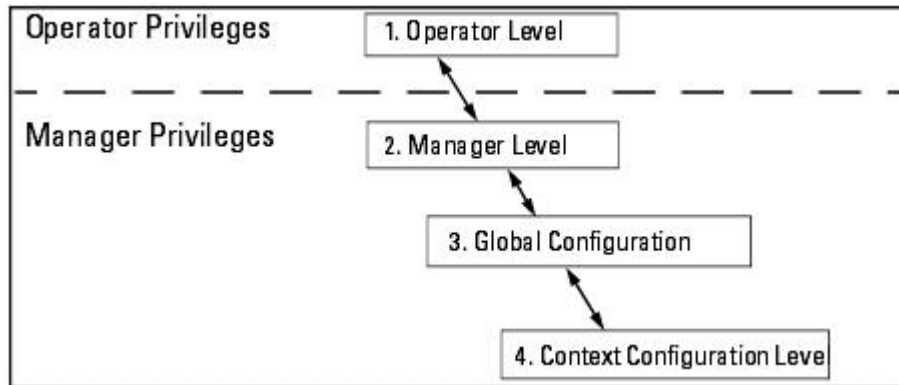
Explanation

Explanation/Reference:

For HP E-series switches:

How To Move Between Levels

Change in Levels	Example of Prompt, Command, and Result	
Operator level to Manager level	ProCurve> enable Password: _	After you enter enable , the Password prompt appears. After you enter the Manager password, the system prompt appears with the # symbol:
	ProCurve# _	
Manager level to Global configuration level	ProCurve# config ProCurve(config) #	
Global configuration level to a Context configuration level	ProCurve(config) # vlan 10 ProCurve(vlan-10) #	
Context configuration level to another Context configuration level	ProCurve(vlan-10) # interface e 3 ProCurve(int-3) #	The CLI accepts "e" as the abbreviated form of "ethernet".
Move from any level to the preceding level	ProCurve(int-3) # exit ProCurve(config) # exit ProCurve# exit ProCurve>	
Move from any level to the Manager level	ProCurve(int-3) # end ProCurve# —or— ProCurve(config) # end ProCurve#	



Operator level:

At the Operator level you can examine the current configuration and move between interfaces without being able to change the configuration. A ">" character delimits the Operator-level prompt.

For example: *ProCurve>*

Manager level:

Provides all Operator level privileges plus the ability to perform system-level actions that do not require saving changes to the system configuration file. The prompt for the Manager level contains only the system name and the "#" delimiter. To select this level, enter the **enable** command at the Operator prompt and enter the Manager password, when prompted.

For example: *ProCurve#*

Global Configuration:

Provides all Operator and Manager level privileges, and enables you to make configuration changes to any of the switch's software features. The prompt for the Global Configuration level includes the system name and "(config)". To select this level, enter the **config** command at the Manager prompt.

For example: *ProCurve(config)#*

Context Configuration:

Provides all Operator and Manager privileges, and enables you to make configuration changes in a specific context, such as one or more ports or a VLAN. The prompt for the Context Configuration level includes the system name and the selected context.

For example: *ProCurve(eth-1)#*

QUESTION 58

Which HP E-Series switch features redundant management and fabric modules?

- A. E2910 al
- B. E8212 zl
- C. E5412 zl

D. E4208 vl

Correct Answer: B

Section: Switch models

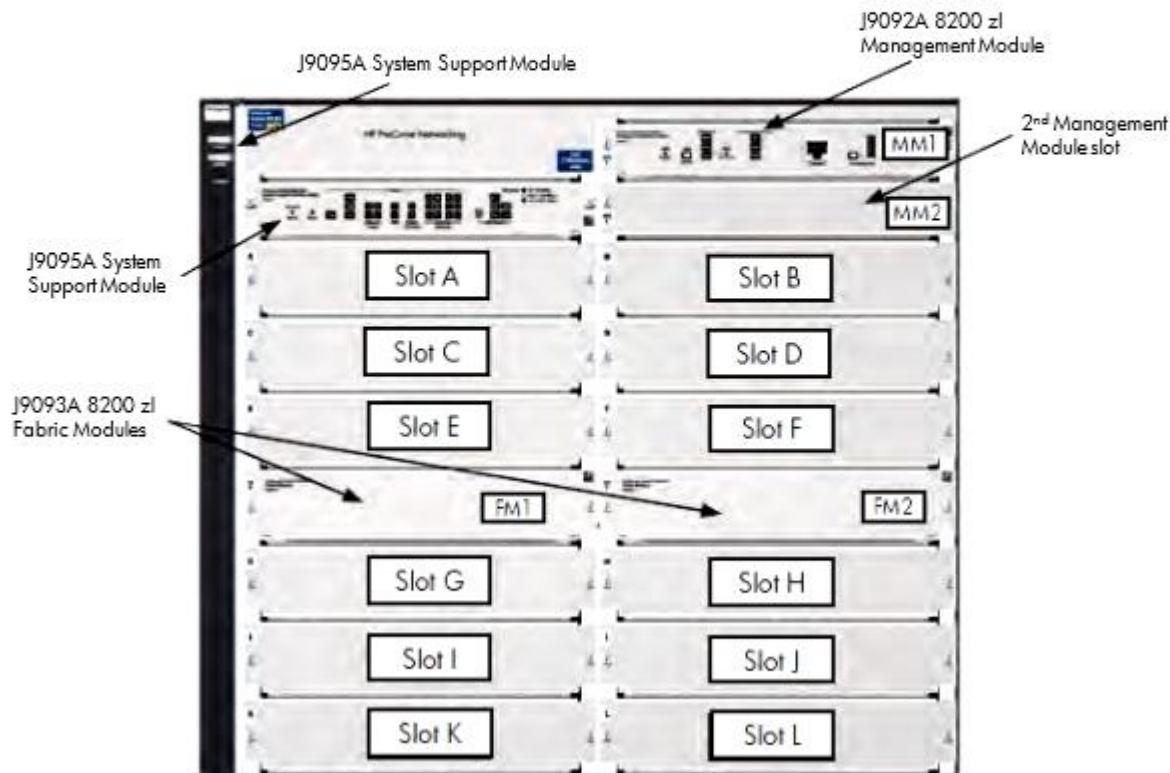
Explanation

Explanation/Reference:

HP 8212 zl Switch chassis layout

The HP 8212 zl Switch is a rack-mountable, 9U-height chassis. The interface modules are inserted in the front slots, labeled A through L. Management and fabric modules are labeled MM1/MM2 and FM1/FM2, respectively.

Figure 3: HP 8212 zl Switch Base System slot labeling (J8715B)
(MM = Management Module; FM = Fabric Module; all others = Interface Module)



QUESTION 59

Which type of port can handle more than one untagged VLAN on an HP A-Series switch?

- A. trunk
- B. access
- C. aggregated
- D. hybrid

Correct Answer: D

Section: VLANs

Explanation

Explanation/Reference:

Hybrid Ports:

- Belongs to multiple VLAN.
- Multiple VLANs can be untagged and tagged.
- Typically used for IP Phones connection.
- Also in conjunction with Protocols VLAN, IP Subnet VLANs.

QUESTION 60

You must configure VLANs and ports on an HP A7500 switch at default settings. What is the effect of the following commands?

```
[SW-Gigabit-Ethernet1/0/1]port link-type trunk  
[SW-Gigabit-Ethernet1/0/1]port trunk permit vlan 100 101
```

- A. The switch will forward traffic for VLANs 100 and 101 with 802.1Q tags. Traffic for VLAN 1 will be untagged. Traffic for all other VLANs will be discarded.
- B. The switch will add port 1/0/1 to a Link Aggregation Group (LAG) that is a tagged member of VLANs 100 and 101.
- C. The switch will forward traffic for VLANs 100 and 101, but will discard traffic for all other VLANs.
- D. The switch will forward VLAN 101 traffic with 802.1Q tags. VLAN 100 traffic will be untagged.

Correct Answer: A

Section: VLANs

Explanation

Explanation/Reference:

QUESTION 61

Which statement accurately describes the state of Gigabit Ethernet 3/0/12 in the HP A-Series switch configuration shown in the exhibit?

```
system-view
interface Gig 3/0/12
 port link-type trunk
 port trunk permit vlan 10 11
 port trunk pvid vlan 12
```

- A. The interface will be a tagged member of VLAN 12.
- B. The interface will be an untagged member of VLAN 1.
- C. The interface will be an untagged member of VLAN 12.
- D. The interface will drop all incoming packets for VLAN 12.

Correct Answer: C

Section: VLANs

Explanation

Explanation/Reference:

QUESTION 62

You must configure a port on an A5800 switch to support protocol-based VLANs and port-based VLANs. Which port type supports this requirement?

- A. hybrid
- B. access
- C. aggregated
- D. trunk
- E. tagged

Correct Answer: A

Section: VLANs

Explanation**Explanation/Reference:****Hybrid Ports:**

- Belongs to multiple VLAN.
- Multiple VLANs can be untagged and tagged.
- Typically used for IP Phones connection.
- Also in conjunction with Protocols VLAN, IP Subnet VLANs.

QUESTION 63

You must configure SSH on an HP A7500 switch. Which item must be generated on the switch?

- A. passphrase
- B. shared secret
- C. self-signed certificate
- D. encryption keys

Correct Answer: D

Section: Security

Explanation**Explanation/Reference:****QUESTION 64**

You must reset the startup configuration of an HP A-Series switch to factory defaults. Which CLI view will enable you to complete this task?

- A. manager view
- B. global configuration view
- C. system view
- D. user view

Correct Answer: D

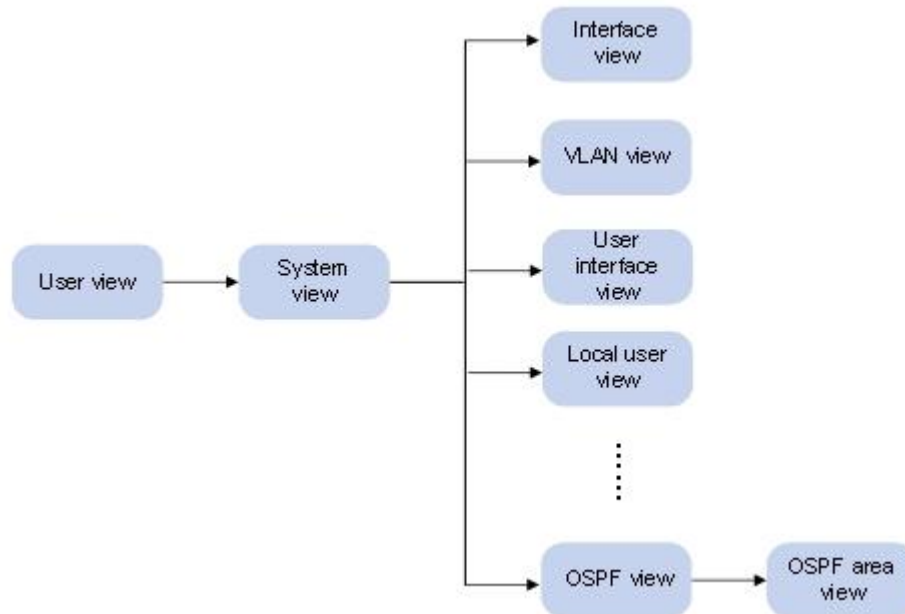
Section: CLI

Explanation**Explanation/Reference:**

You can delete a startup configuration file to be used at the next startup. With startup configuration files deleted, the devices use factory defaults at the next startup.

Task	Command	Remarks
Delete a startup configuration file to be used at the next startup from the storage medium.	reset saved-configuration [backup main]	Required. Available in user view.

For HP A-series switches:



User view:

After logging in to the switch, you are in user view. The prompt of user view is <device name>. In user view, you can perform display, debugging, and file management operations, set the system time, restart your device, and perform FTP and Telnet operations.

The prompt example: <switch>

System view:

From user view, you can enter system view, where you can configure parameters such as daylight saving time, banners, and short-cut keys.

The prompt example: [switch]

Different function views:

From system view, you can enter different function views. For example, you can enter interface view to configure interface parameters, enter user interface view to configure login user attributes, create a VLAN and enter its view, create a local user and enter local user view to configure the password and level of the local user, or enter OSPF view to configure OSPF parameters.

The prompt example: [switch-ui-vty1]

QUESTION 65

Which view is indicated by the following prompt on an HP A7500 switch?

<A7500>

- A. system
- B. operator
- C. user
- D. console

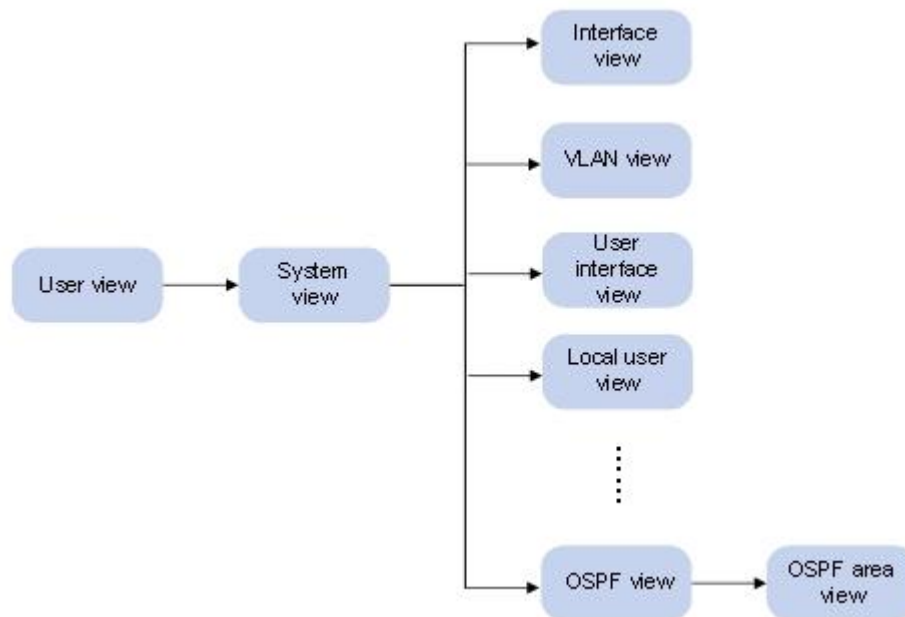
Correct Answer: C

Section: CLI

Explanation

Explanation/Reference:

For HP A-series switches:



User view:

After logging in to the switch, you are in user view. The prompt of user view is <device name>. In user view, you can perform display, debugging, and file management operations, set the system time, restart your device, and perform FTP and Telnet operations.
The prompt example: <switch>

System view:

From user view, you can enter system view, where you can configure parameters such as daylight saving time, banners, and short-cut keys.
The prompt example: [switch]

Different function views:

From system view, you can enter different function views. For example, you can enter interface view to configure interface parameters, enter user interface view to configure login user attributes, create a VLAN and enter its view, create a local user and enter local user view to configure the password and level of the local user, or enter OSPF view to configure OSPF parameters.
The prompt example: [switch-ui-vty1]

QUESTION 66

You have uploaded an application file named "A12500.bin" to an HP A12500 switch. Which command ensures this file is used during the next boot cycle?

- A. boot-file cf:/A12500.bin main
- B. load appfile cf:/A12500.bin main
- C. boot-loader file cf:/A12500.bin main
- D. set boot file cf:/A12500.bin main

Correct Answer: C

Section: Others

Explanation

Explanation/Reference:

To specify a boot file to be used at the next boot:

Task	Command	Remarks
Specify a boot file to be used at the next boot.	<code>boot-loader file file-url { main backup }</code>	Required. Available in user view.

QUESTION 67

Which interface is available for managing A-Series switches at factory default settings?

- A. Telnet
- B. menu
- C. console
- D. web

Correct Answer: C

Section: Others

Explanation

Explanation/Reference:

QUESTION 68

You have initiated a console session on an HP A-Series switch at default settings. What is your privilege level?

- A. Visit (0)
- B. Monitor (1)
- C. System (2)
- D. Manage (3)

Correct Answer: D

Section: Security

Explanation

Explanation/Reference:

-
5. Configure the privilege level for users that log in through the current user interface. **user privilege level level**

needed for AXX users.

Optional.

By default, the user privilege level for users logged in through the console user interface is 3, and that for users logged in through the other user interfaces is 0.

All the commands are categorized into four levels: visit, monitor, system, and manage, and are identified from low to high, respectively, by 0 through 3. [Table 7](#) describes the command levels.

Table 7 Default command levels

Level	Privilege	Description
0	Visit	Involves commands for network diagnosis and commands for accessing an external device. Configuration of commands at this level cannot survive a device restart. Upon device restart, the commands at this level will be restored to the default settings. Commands at this level include ping , tracert , telnet , and ssh2 .
1	Monitor	Involves commands for system maintenance and service fault diagnosis. Commands at this level are not saved after being configured. After the switch is restarted, the commands at this level will be restored to the default settings. Commands at this level include debugging , terminal , refresh , and send .
2	System	Provides service configuration commands, including routing configuration commands and commands for configuring services at different network levels. By default, commands at this level include all configuration commands except for those at manage level.
3	Manage	Involves commands that influence the basic operation of the system and commands for configuring system support modules. By default, commands at this level involve the configuration commands of file system, FTP, TFTP, Xmodem download, user management, level setting, and parameter settings within a system (which are not defined by any protocols or RFCs).

QUESTION 69

What is a fit Access Point?

- A. an AP that can provide WLAN services without a controller
- B. an AP that has no intelligence and requires a wireless controller
- C. an AP that can be deployed autonomously or with a controller
- D. an AP that provides some intelligence under the management of a controller

Correct Answer: D

Section: Wireless

Explanation

Explanation/Reference:

- A FAT AP provides all authentication, connection management, and encryption in itself.
- A Thin AP delegates all of these functions to an Access Controller.
- A FIT AP is a mix of the two - it handles encryption, while delegating connection management and authentication to an Access Controller.

QUESTION 70

At the CLI of an HP E5406 zl switch, you have assigned ports A1-A4 to VLAN 70 as untagged members. All other configuration parameters on the E5406 zl are at default settings. The E5406 zl is connected through port B1 to an HP E8212 zl switch. The E8212 zl has been configured with an IP interface associated with VLAN 70, and IP routing has been enabled. On the E5406 zl, what must you do to enable the E8212 zl to act as default gateway for VLAN 70 clients?

- A. Define an IP interface in VLAN 70.
- B. Configure port B1 to be a member of VLAN 70.
- C. Define the VLAN 70 IP address of the E8212 zl as the default gateway.
- D. Add a static route to the E8212 to the E5406 zl route table.

Correct Answer: B

Section: VLANs

Explanation

Explanation/Reference:

Note: The clients uses E5406 as default gateway!

QUESTION 71

What is the default state of DHCP relay on an HP E5400 zl Series switch?

- A. DHCP relay is enabled as soon as a DHCP server is defined.
- B. DHCP relay is enabled as soon as an IP interface is defined on the switch.
- C. DHCP relay is enabled globally but must be configured for each VLAN.
- D. DHCP relay is disabled globally.

Correct Answer: C

Section: Others

Explanation

Explanation/Reference:
Prerequisites for DHCP Relay Operation:

For the DHCP Relay agent to work on the switch, the following steps need to be completed:

- Enable DHCP Relay on the routing switch (the default setting).
- Ensure that a DHCP server is servicing the routing switch.
- Enable IP Routing on the routing switch.
- Ensure that there is a route from the DHCP server to the routing switch and back.
- Configure one or more IP helper addresses for specified VLANs to forward DHCP requests to DHCP servers on other subnets.

To enable the DHCP Relay:

The DHCP Relay function is enabled by default on a ProCurve routing switch. However, if DHCP has been disabled, you can re-enable it by entering the following command at the global configuration level:

ProCurve(config)# dhcp-relay

QUESTION 72

What is the effect of the following command entered at the switch CLI?

```
E3500(vlan-200)# no untag 22
```

```
E3500(config)# show vlan 200

Status and Counters - VLAN Information - VLAN 200

VLAN ID : 200
Name : VLAN200
Status : Port-based
Voice : No
Jumbo : No

Port Information Mode Unknown VLAN Status
-----
22 Untagged Learn Up

E3500(config)# show vlans port 22

Status and Counters - VLAN Information - for ports 22

VLAN ID Name ! Status Voice Jumbo
-----+-----
200 VLAN200 ! Port-based No No
```

- A. Port 22 will no longer forward untagged traffic.
- B. The CLI prompts the administrator for a new VLAN assignment for port 22.

- C. Port 22 becomes a tagged member of VLAN 200.
- D. The operation fails because port 22 cannot be "orphaned".

Correct Answer: D

Section: VLANs

Explanation

Explanation/Reference:

QUESTION 73

At a customer site, you have configured static link aggregation between an HP E8212 zl switch and an HP E5406 zl switch. The aggregated link includes two ports on each switch. During testing, traffic analysis reveals that only one of the links is being used to full capacity. The other link is operating well below capacity. What is an accurate explanation for this finding?

- A. The second link is in standby mode and will only be used to full capacity if the first link fails.
- B. Load balancing is only effective between ports of the same speed.
- C. This behavior is normal because a port trunk does not use adaptive load balancing.
- D. You must manually enable load balancing for the aggregated links.

Correct Answer: C

Section: Link aggregation

Explanation

Explanation/Reference:

QUESTION 74

You must configure static link aggregation using LACP between an HP E5406 zl switch and an HP E8212 zl switch. What must match on all ports that will be included in the aggregated link? (Select three.)

- A. duplex
- B. flow control
- C. MDI mode
- D. VLAN membership
- E. broadcast limits
- F. speed

Correct Answer: ABF

Section: Link aggregation

Explanation

Explanation/Reference:

QUESTION 75

Which command saves the running configuration of an HP E5400 zl Series switch to its startup configuration?

- A. write config
- B. write running-config startup-config
- C. save config
- D. write memory

Correct Answer: D

Section: CLI

Explanation

Explanation/Reference:

QUESTION 76

To begin updating the software on this HP E-Series switch, an administrator issues the following command at the CLI:

```
Switch(config)# copy usb flash K_14_65.swi secondary
```

If the file transfer is successful, when will the switch begin using the K.14.65 software?

Switch# show flash				
Image		Size (bytes)	Date	Version
Primary Image	:	9839140	11/06/09	K.14.47
Secondary Image	:	9839140	11/06/09	K.14.47
Boot ROM Version	:	K.15.08		
Default Boot	:	Primary		

- A. as soon as the transfer is complete
- B. when the switch is booted using secondary flash
- C. when the software image is copied to primary flash

D. when the boot system command is issued

Correct Answer: B

Section: CLI

Explanation

Explanation/Reference:

Booting from the Default Flash (Primary or Secondary)

The **boot** command boots the switch from the flash image that you are currently booted on, or the flash image that was set either by the **boot set default** command or by the last executed **boot system flash <primary | secondary>** command. This command also executes the complete set of subsystem self tests. You have the option of specifying a configuration file.

QUESTION 77

What is the effect of the following command issued at the CLI of an HP E5400 zl Series switch?

```
Switch# show logging 1
```

- A. The CLI displays usage statistics for the previous hour.
- B. The CLI displays a summary of events in the primary log.
- C. The CLI displays only logged events for VLAN 1.
- D. The CLI displays all events in the system log that include the string "1".

Correct Answer: D

Section: CLI

Explanation

Explanation/Reference:

Syntax: `show logging [-a, -r] [<search-text>]`

By default, the show logging command displays the log messages recorded since the last reboot in chronological order.

-a displays all recorded log messages, including those before the last reboot.

-r displays all recorded log messages, with the most recent entries listed first.

<search-text> displays all Event Log entries that contain the specified text

Use a <search-text> value with -a or -r to further filter show logging command output.

QUESTION 78

What is the relationship between the primary and secondary flash areas of an HP E8206 zl switch?

- A. The primary area contains the switch's operating system. The secondary area contains the configuration files.
- B. The primary area contains the switch's operating system, which is automatically copied to the secondary area whenever it is upgraded.

- C. The primary and secondary images are managed independently, enabling the switch to be started using either image.
- D. The primary area contains the most recent software version. The secondary area always holds an earlier version as a backup.

Correct Answer: C

Section: Others

Explanation

Explanation/Reference:

Using Primary and Secondary Flash Image Options

The switches covered in this guide feature two flash memory locations for storing switch software image files:

- Primary Flash: The default storage for a switch software image.
- Secondary Flash: The additional storage for either a redundant or an alternate switch software image.

With the Primary/Secondary flash option you can test a new image in your system without having to replace a previously existing image. You can also use the image options for troubleshooting. For example, you can copy a problem image into Secondary flash for later analysis and place another, proven image in Primary flash to run your system. The switch can use only one image at a time.

QUESTION 79

You must install an HP E-MSM AP that is at factory settings. When must you change the AP's operating mode?

- A. when the AP must interoperate with HP A-Series APs
- B. when the AP must operate in controlled mode
- C. when the AP must operate in autonomous mode
- D. when the AP will act as a wireless bridge

Correct Answer: C

Section: Wireless

Explanation

Explanation/Reference:

Read this before resetting to factory defaults

Resetting an AP to factory defaults has the following effects:

- The AP is returned to controlled mode operation. If required, switch the AP *back to autonomous mode* as described in the product Quickstart.

...

QUESTION 80

You must connect an E-MSM Access Point to a switch that supports the PoE (802.3af) standard. What is the maximum amount of power the AP will be able to receive from the switch?

- A. 11.4 watts

- B. 15.4 watts
- C. 19.4 watts
- D. 23.4 watts

Correct Answer: B

Section: Others

Explanation

Explanation/Reference:

QUESTION 81

What is a Virtual Service Community (VSC)?

- A. a custom group for managing HP A-Series wireless products in the Intelligent Management Console (IMC)
- B. a group of settings applied to a WLAN on HP E-MSM wireless products
- C. a group of HP E-MSM Access Points controlled by the same E-MSM access controller
- D. a group of HP E-MSM Access Points that share the same configuration parameters

Correct Answer: B

Section: Wireless

Explanation

Explanation/Reference:

A VSC (virtual service community) is a collection of configuration settings that define key operating characteristics of an AP. In most cases, a VSC is used to define the characteristics of a wireless network. Multiple VSCs can be active at the same time, allowing for great flexibility in the configuration of services. For example, in the following scenario four VSCs are used to support different types of wireless users. *Each VSC is configured with a different wireless network name (SSID), and the quality of service (QoS) feature is used to classify user traffic priority.*

QUESTION 82

Which 802.11n frequency ranges are supported on the E-MSM422 Access Point? (Select two.)

- A. 900 MHz
- B. 2.4 GHz
- C. 5 GHz
- D. 9 GHz
- E. 11 GHz

Correct Answer: BC

Section: Wireless

Explanation

Explanation/Reference:

QUESTION 83

You must configure an E-MSM Access Point that is configured for autonomous mode. Which management interface must you use for this task?

- A. Telnet CLI
- B. console CLI
- C. web interface
- D. setup menu

Correct Answer: C

Section: Wireless

Explanation

Explanation/Reference:

QUESTION 84

What is the VLAN membership of wireless traffic exiting the bridge port on an HP E-MSM Access Point with default VLAN settings?

- A. VLAN assigned by RADIUS profile
- B. VLAN 1
- C. VLAN assigned by switch's GVRP configuration
- D. untagged VLAN on connected switch port

Correct Answer: D

Section: Wireless

Explanation

Explanation/Reference:

QUESTION 85

You have defined a link aggregation group on an HP A5800 switch. Which view should you enter to assign ports to the group?

- A. user view
- B. bridge-aggregation view
- C. global configuration view
- D. Ethernet interface view

Correct Answer: D

Section: Link aggregation

Explanation

Explanation/Reference:

QUESTION 86

What is the default IRF Master priority on an HP A-Series switch?

- A. 0
- B. 1
- C. 32
- D. 64

Correct Answer: B

Section: IRF

Explanation

Explanation/Reference:

HP 5820X & 5800 Switch Series IRF Configuration Guide

Member priority

Member priority determines the role that a member switch can play in an IRF virtual device. A member with a higher priority is more likely to be a master. The member priority of a switch is user configurable, and *defaults to 1*. Modify the priority at the CLI.

<http://bizsupport1.austin.hp.com/bc/docs/support/SupportManual/c02648772/c02648772.pdf>

QUESTION 87

When is it necessary to configure an IP address on an HP E5400 zl Series switch? (Select two.)

- A. when a VLAN is defined on the switch

- B. when the switch must be configured for MSTP
- C. when the switch must provide default gateway services to end users
- D. when the switch must forward traffic over untagged links
- E. when the switch must be managed remotely

Correct Answer: CE

Section: Others

Explanation

Explanation/Reference:

QUESTION 88

What is indicated by these entries in the IP route table of an HP E5406 zl Series switch with IP routing enabled?

IP Route Entries						
Destination	Gateway	VLAN	Type	Sub-Type	Metric	Dist.
0.0.0.0/0	10.0.135.2	135	static		1	1
10.0.135.0/24	VLAN135	135	connected		1	0

- A. The switch will drop all VLAN 135 traffic with a destination address of 10.0.135.2.
- B. The switch will use 10.0.135.2 as the next hop for all traffic destined for networks not specifically listed in its route table.
- C. The switch has two routes to VLAN 135 and prefers the static route.
- D. The switch with address 10.0.135.2 will act as default gateway for all hosts in the address range of 10.0.135.0/24.

Correct Answer: B

Section: VLANs

Explanation

Explanation/Reference:

QUESTION 89

Which settings are specified when configuring a Virtual Service Community (VSC) on an HP E- MSM Access Point? (Select three.)

- A. mode
- B. DNS server

- C. VLAN
- D. QoS
- E. encryption
- F. radio frequency

Correct Answer: CDE

Section: Wireless

Explanation

Explanation/Reference:

Add/Edit Virtual Service Community

General

Name:

☐ Use HP MSM Controller

☒ Virtual AP

WLAN

Name (SSID):

DTIM count:

Transmit/receive on:

☒ Broadcast name (SSID)

☐ Advertise TX power

☒ Broadcast filtering

Wireless clients

Max clients per radio:

Allow traffic between: wireless clients

☐ Quality of service

Priority mechanism:

IP QoS profiles:

☒ Upstream DiffServ tagging

☒ Enable WMM advertising

☐ Allowed wireless rates (advanced)

Egress VLAN

VLAN ID:

☒ Wireless security filters

Restrict wireless traffic to:

☒ MSM422 default gateway

☐ Wireless protection

Mode*:

Key source:

RADIUS profile:

☐ RADIUS accounting

RADIUS profile:

Called-Station-Id Content:

Station ID delimiter:

Station ID MAC case:

*On radios in pure 802.11n mode WPA2 is always used instead of WPA

☐ MAC-based authentication

RADIUS Profile:

☐ RADIUS accounting

RADIUS Profile:

Station ID delimiter:

Station ID MAC case:

Called-Station-Id Content:

☐ MAC filter

MAC Address list:

Filter action: ☐ Allow ☒ Block

☐ IP filter

Only allow traffic addressed to:

IP address / Mask

/

QUESTION 90

You have defined VLANs 31 and 32 on an HP E5400 zl Series switch and assigned untagged ports to both VLANs. You have defined IP addresses for both VLAN interfaces. You have configured IP helper to enable clients in VLAN 31 to receive IP addresses from a DHCP server in VLAN 32. Which other feature must be enabled before the clients will receive addresses from the server?

- A. DNS
- B. DHCP relay
- C. IP routing
- D. DHCP snooping

Correct Answer: C

Section: VLANs

Explanation

Explanation/Reference:

QUESTION 91

{Incomplete: characters/words missing!}

You are designing the network for a local bank that has one main office and three branch offices. The core switch/routers will be in the main office data center. Each branch office requires network access connectivity for 24 to 36 devices and connectivity between three local VLANs for user workstations, servers, and IP phones.

Which switch is the most appropriate for the branch offices?

- A. E5400
- B. V1410
- C. A7500
- D. E2910

Correct Answer: D

Section: Switch models

Explanation

Explanation/Reference:

QUESTION 92

You are implementing a network of HP E-MSM APs in your building. You would like to configure different SSIDs that each have their own security settings, QoS, and egress VLAN. Which E-MSM feature supports these requirements?

- A. Virtual Wireless Community (VWC)
- B. SSID Profile
- C. Service Profile
- D. Virtual Service Community (VSC)

Correct Answer: D

Section: Wireless

Explanation

Explanation/Reference:

A VSC (virtual service community) is a collection of configuration settings that define key operating characteristics of an AP. In most cases, a VSC is used to define the characteristics of a wireless network. Multiple VSCs can be active at the same time, allowing for great flexibility in the configuration of services. For example, in the following scenario four VSCs are used to support different types of wireless users. *Each VSC is configured with a different wireless network name (SSID), and the quality of service (QoS) feature is used to classify user traffic priority.*

QUESTION 93

HP E-MSM APs can be managed by both a web-based interface and a local AP CLI when operating in which mode?

- A. Autonomous
- B. Fat AP
- C. Thin AP
- D. Controlled
- E. Fit AP

Correct Answer: A

Section: Wireless

Explanation

Explanation/Reference:

QUESTION 94

Which wireless standard introduced multiple input, multiple output (MIMO) design?

- A. 802.11a
- B. 802.11b
- C. 802.11g
- D. 802.11n

Correct Answer: D

Section: Wireless

Explanation

Explanation/Reference:

QUESTION 95

{Incomplete: characters/words missing!}

Your data center is expanding. You are configuring a new E5406 switch to provide |... data center. The new switch will integrate with your existing infrastructure of E5400|... as part of the STP topology in your data center.

Which command at the proper command prompt sets the STP mode to RSTP on the|... ?

- A. Switch(config)# spanning-tree force-version rstp-operation
- B. [Switch] stp mode rstp
- C. Switch# rstp edged-port enable
- D. Switch(config)# spanning-tree mode rstp-operation

Correct Answer: A

Section: Spanning tree protocol

Explanation

Explanation/Reference:

Syntax: spanning-tree force-version < stp-compatible | rstp-operation | mstp-operation >

Sets the spanning-tree compatibility mode. This command forces the switch to emulate behavior of earlier versions of spanning tree protocol, or return to MSTP behavior. The command is useful in test or debug applications, and removes the need to reconfigure the switch for temporary changes in spanning-tree operation.

stp-compatible: *The switch applies 802.1D STP operation on all ports.*

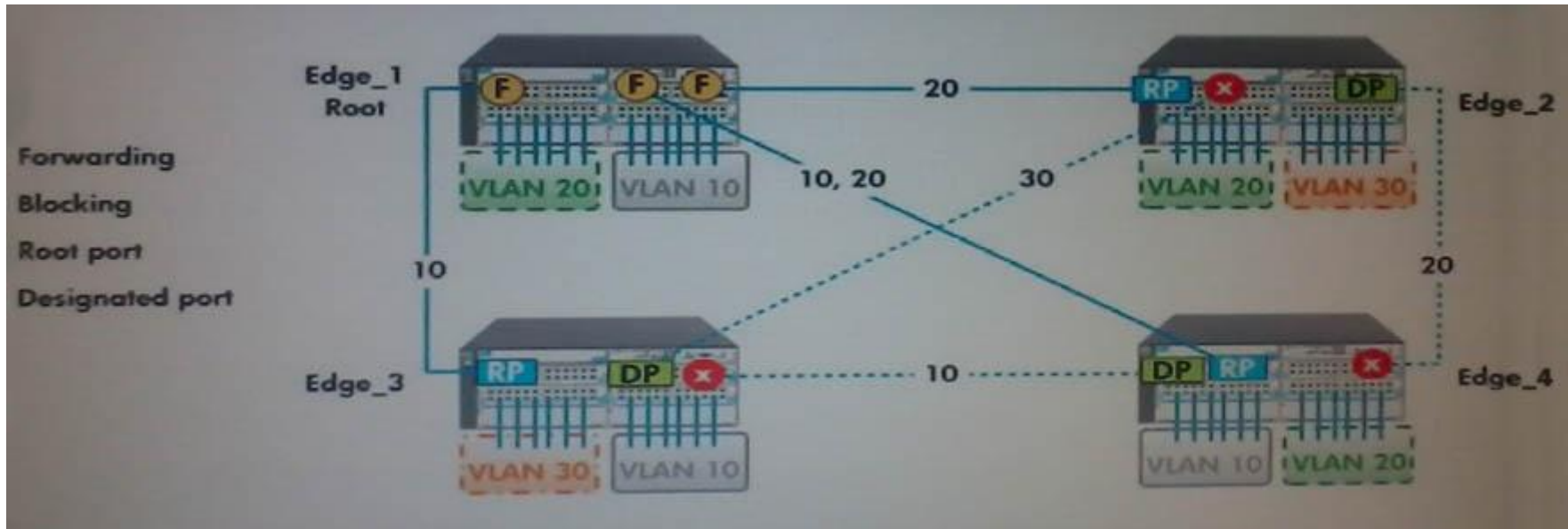
rstp-operation: *The switch applies 802.1w operation on all ports except those ports where it detects a system using 802.1D Spanning Tree.*

mstp-operation: *The switch applies 802.1s MSTP operation on all ports where compatibility with 802.1D or 802.1w spanning tree protocols is not required.*

*Note that even when mstp-operation is selected, if the switch detects an 802.1D BPDU or an 802.1w BPDU on a port, it communicates with the device linked to that port using STP or RSTP BPDU packets. Also, if errors are encountered as described in the "Note on MSTP Rapid State Transitions" on page 4-18, setting **force-version** to **stp-compatible** forces the MSTP switch to communicate out all ports using operations that are compatible with IEEE 802.1D STP.*

QUESTION 96

{Incomplete: characters/words missing!}



The exhibit shows a spanning tree network topology. The matrix design provides redundant links between each swi|...
each link show the VLANs configured on those links.
What happens when the link between Edge_2 and Edge_3 is blocked by spanning tree?

- A. VLAN 30 traffic re-routes through Edge_4.
- B. VLAN 30 traffic re-routes through Edge_1.
- C. VLAN 30 will be dynamically assigned to the Edge_3-Edge_1-Edge_2 links.
- D. VLAN 30 will be dynamically assigned to the Edge_3-Edge_4-Edge_2 links.
- E. VLAN 30 hosts on Edge_2 are isolated from VLAN 30 hosts on Edge_3.

Correct Answer: E

Section: VLANs

Explanation

Explanation/Reference:

QUESTION 97

You have a network with several E-Series switches running STP. One of the switches appears to have misconfigured edge ports. Which show command should you use to verify the STP configuration?

- A. show spanning-tree ports
- B. show spanning-tree config
- C. show stp details
- D. show mst config

Correct Answer: B

Section: Spanning tree protocol

Explanation

Explanation/Reference:

QUESTION 98

Your company has a mission-critical web application running on a Microsoft Windows server cluster. The system administrator would like to set up link aggregation for each server in the cluster with links distributed across multiple switches for high availability.

Which E5400 zl Series switch feature provides the high availability and load-sharing for these server-to-switch connections?

- A. Port Trunking
- B. Distributed Trunking
- C. Dynamic Link Aggregation
- D. Static Link Aggregation

Correct Answer: B

Section: Link aggregation

Explanation

Explanation/Reference:

QUESTION 99

```
write memory usb switch.cfg
copy startup-config tftp 10.1.1.2 switch.cfg
show config > primary:switch.cfg
```

```
copy command-output 'show config' tftp@192.168.0.12:switch.cfg  
copy config switch.cfg secondary
```

After typing the series of commands shown in the exhibit on an E5400 Series switch, where will you find the file "switch.cfg" with a copy of the switch's current startup configuration?

- A. on a USB drive
- B. on the TFTP server 192.168.0.12
- C. in the primary flash area
- D. in the secondary flash area
- E. on TFTP server 10.1.1.2

Correct Answer: E

Section: Others

Explanation

Explanation/Reference:

QUESTION 100

Which statement is true about the flash memory architecture on E5400 zI Series switches?

- A. Either the primary or secondary flash area can be set as the default boot area for a switch.
- B. The secondary flash area is located on a removable USB drive for backup purposes.
- C. The primary and secondary flash areas must contain identical software images.
- D. The secondary flash area is a mirrored copy of the primary for backup purposes.

Correct Answer: A

Section: Others

Explanation

Explanation/Reference:

Booting from a Specified Flash

This version of the boot command gives you the option of specifying whether to reboot from primary or secondary flash, and is the required command for rebooting from secondary flash. This option also executes the complete set of subsystem self-tests.

Syntax: **boot system flash < primary | secondary >**

QUESTION 101

{Incomplete: characters/words missing!}

HP Technical Support has instructed you to make some configuration changes |...
would like to make a backup copy of the current configuration to a USB flash dr|...
command prompt to copy the current boot configuration to a USB flash drive?

- A. Switch(config)# copy startup-config usb
- B. Switch# copy config usb
- C. [Switch] copy primary: usb:
- D. Switch> copy primary-config usb:

Correct Answer: A

Section: Others

Explanation

Explanation/Reference:

USB: Copying a Configuration File to a USB Device

To use this method, a USB flash memory device must be connected to the switch's USB port.

Syntax: copy startup-config usb <filename>
copy running-config usb <filename >

Uses the USB port to copy a designated configuration file from the switch to a USB flash memory device. For more on multiple configuration files, refer to "Multiple Configuration Files" on page 5-26.

For example, to copy the startup configuration file to a USB flash drive:

1. Insert a USB device into the switch's USB port.
2. Execute the following command:

```
HP Switch# copy startup-config usb hp-config
```

where hp-config is the name given to the configuration file that is copied from the switch to the USB device.

QUESTION 102

Match the show logging command that will query the event log of an E-Series switch with the Desired Output that it provides.

Select and Place:

View events related to Spanning Tree Protocol	(place here)
View events for debugging purposes	(place here)
View events from previous boot cycles	(place here)
View events with timestamps in descending order	(place here)

<code>show logging -r</code>	<code>show logging stp</code>
<code>show logging -d</code>	<code>show logging -t</code>

Correct Answer:

View events related to Spanning Tree Protocol	<code>show logging stp</code>
View events for debugging purposes	<code>show logging -d</code>
View events from previous boot cycles	<code>show logging -r</code>
View events with timestamps in descending order	<code>show logging -t</code>

Section: Others
Explanation

Explanation/Reference:
show logging -r WRONG
show logging -a TRUE pls change it.

QUESTION 103

You are configuring an E5400 zl Series switch. It is brand new and has the factory default configuration. Which CLI prompt indicates that you are logged in with the proper privilege level and context to set the host name of the switch?

- A. Switch#
- B. Switch(config)#
- C. [Switch]
- D. Switch>#

Correct Answer: B
Section: CLI
Explanation

Explanation/Reference:**QUESTION 104**

{Incomplete: characters/words missing!}

You are the network manager for a regional the company that has 120 branch offices in the Eastern United States. You have HP E-series switches and routers at each branch location and in the primary data center located in Huston, Texas, _____ management of _____ of these devices has proven difficult because the network equipment at each branch is behind a firewall and NAT gateway.

Which HP network management feature allows you to manage all of your HP equipment behind the firewalls and NATs?

- A. PCM+ ... 43
- B. PCM+ Agent
- C. PCM+ Firewall Manager
- D. PCM+ Remote Site Manager

Correct Answer: B

Section: ProCurve Manager

Explanation

Explanation/Reference:

A third factor in determining the number of Agents that you require is the location of firewalls in your network. Today, firewalls are often used to protect networks or segments of networks. Often, a firewall tightly limits or blocks protocols such as SNMP, TFTP, and HTTP, used by PCM to directly manage network devices. As a result, a local management solution often is employed to manage devices behind a firewall, thus making a centralized management solution for all network devices virtually impossible.

PCM+ 4.0 solves this problem by allowing an Agent to be placed behind a firewall to manage the network devices located there. This remote Agent communicates with a PCM Server through the firewall using an encrypted (SSL over TCP) or plain text connection. Network devices behind the firewall may be securely and centrally managed by PCM+ 4.0.

QUESTION 105

{Incomplete: characters/words missing!}

You manage the network for a large government agency. You have|...
bandwidth capacity and availability for some mission-critical serve|...
advantage of the increased availability, but the links must stay ass|..

Which default behaviour of the E-Series switches must be considered... ?

- A. The aggregated link is assigned to VLAN 1.
- B. Previous VLAN assignments are retained.
- C. The aggregated link becomes a member of all previously assigned VLANs.
- D. The aggregated link becomes a member of all VLANs on the switch.

Correct Answer: A

Section: Link aggregation

Explanation

Explanation/Reference:

answers r true

QUESTION 106

{Incomplete: characters/words missing!}

You manage the network for a regional bank. A new loan processing application is deployed to a new data center. You have looked into upgrading the interfaces of your data center to meet the budget. You have decided to take advantage of the link aggregation feature.

Which requirements for the physical links will be part of the aggregated link configuration? ?

- A. All links must operate in full-duplex (FDx) mode.
- B. All interfaces must be configured with identical MAC addresses.
- C. All physical links must be in the same switch module.
- D. All links must be in access mode in the same VLAN.
- E. All links must be the same link speed.

Correct Answer: AE

Section: Link aggregation

Explanation

Explanation/Reference:

answers r true

QUESTION 107

What is the maximum IRF priority you can assign to an HP A-Series switch?

- A. 8
- B. 16
- C. 32
- D. 64

Correct Answer: C

Section: IRF

Explanation

Explanation/Reference:
irf member priority

Use *irf member priority* to change the priority of an IRF member. Use *undo irf member priority* to restore the default.

Syntax

irf member member-id priority priority
undo irf member member-id priority

Default

IRF member priority is 1.

Parameters

member-id: Specifies an IRF member ID.

priority: **Sets priority in the range of 1 to 32.**

http://www.h3c.com/portal/Technical_Support___Documents/Technical_Documents/Switches/H3C_S12500_Series_Switches/Command/Command/H3C_S12500_CR-Release7128-6W710/02/201301/772484_1285_0.htm

QUESTION 108

When will the switches in an IRF stack compete to become the Master?

- A. when a Slave is configured with a higher priority and restarted
- B. when a new device with the highest Master priority joins an existing IRF stack
- C. when an IRF virtual device is partitioned due to link failure
- D. when a device other than the Master leaves the IRF stack

Correct Answer: C

Section: IRF

Explanation

Explanation/Reference:

HP 5820X & 5800 Switch Series IRF Configuration Guide

Master election

Master election is held each time the topology changes, for example, when the IRF virtual device is established, a new member switch is plugged in, the master switch fails or is removed, or the partitioned IRF virtual devices merge.

The master is elected based on the following rules in descending order:

1. The current master, even if a new member has a higher priority. When an IRF virtual device is being formed, all member switches consider themselves as the master, this rule is skipped.
2. The member with a higher priority.
3. The member with the longest system up-time. The member switches exchange system up-time in the IRF hello packets.
4. The member with the lowest bridge MAC address

The IRF virtual device is formed on election of the master.

During an IRF merge, the switches of the IRF virtual device that fails the master election automatically reboot to join the IRF virtual device that wins the election.

After a master election, all subordinate member switches initialize and reboot with the configuration on the master, and their original configuration, even if it has been saved, is lost.

<http://bizsupport1.austin.hp.com/bc/docs/support/SupportManual/c02648772/c02648772.pdf>

QUESTION 109

Which routing protocol is classified as a distance vector?

- A. IS-IS
- B. BGP
- C. OSPF
- D. RIP

Correct Answer: D

Section: IP routing

Explanation

Explanation/Reference:

QUESTION 110

The IP route table of an HP E5406 zl Series switch includes a route for 10.5.0.0/16 with a gateway of 192.35.35.1. What is the effect of the following command?

```
Switch(config)# ip route 10.5.1.0/24 172.42.42.3
```

- A. The CLI will issue an error because the two routes overlap.
- B. The switch will use the route to 172.42.42.3 as a backup route if its link with 192.35.35.1 goes down.
- C. The switch will forward packets with destinations in the 10.5.1.0/24 address range to 172.42.42.3. All other packets addressed to hosts in the 10.5.0.0/16 address range will be forwarded to 192.35.35.1.
- D. The switch will forward packets addressed to hosts in the 10.5.0.0/16 address range to 192.35.35.1. The route statement for the 10.5.1.0/24 address range will be ignored.

Correct Answer: C

Section: IP routing

Explanation

Explanation/Reference:

QUESTION 111

When RIP is enabled on HP E5406 zl Series switches, which routes are automatically redistributed to RIP peers?

- A. default
- B. connected
- C. OSPF
- D. static

Correct Answer: B

Section: IP routing

Explanation

Explanation/Reference:

QUESTION 112

What is the effect of the following command, issued at the CLI of an HP E5406 zl Series switch with IP routing enabled?

```
Switch(config)# ip route 0.0.0.0/0 10.6.254.2
```

- A. The switch will use 10.6.254.2 as the next hop for all traffic destined for networks not specifically listed in its route table.
- B. The switch will act as default gateway for all hosts in the address range of 10.6.0.0/16.
- C. The switch will forward all broadcast traffic to 10.6.254.2.
- D. The switch will drop all traffic arriving on interface 10.6.254.2.

Correct Answer: A

Section: IP routing

Explanation

Explanation/Reference:

QUESTION 113

On an HP A12500 switch, which type of port can support only one untagged VLAN and multiple 802.1Q VLANs?

- A. hybrid
- B. access
- C. aggregated
- D. trunk

Correct Answer: D

Section: VLANs

Explanation

Explanation/Reference:

QUESTION 114

Which view is indicated by the following prompt on an HP A7500 switch? [A7500]

- A. system
- B. manager
- C. user
- D. admin

Correct Answer: A

Section: CLI

Explanation

Explanation/Reference:

System view:

From user view, you can enter system view, where you can configure parameters such as daylight saving time, banners, and short-cut keys.

The prompt example: [switch]

QUESTION 115

What must you do to update the software on the switch shown in the exhibit to version K.14.65?

Switch# show flash				
Image	Size (bytes)	Date	Version	
Primary Image	:	9839140	11/06/09	K.14.47
Secondary Image	:	9839140	11/06/09	K.14.47
Boot ROM Version	:	K.15.08		
Default Boot	:	Primary		

- A. Copy the new software to the primary flash area and the switch will immediately begin using the new software.
- B. Copy the new software to either flash area. Issue the boot system flash command specifying the area holding the new software.
- C. Copy the new software to the secondary flash area and the switch will immediately begin using the new software.
- D. Copy the new software to both flash areas and enter the image update command.

Correct Answer: B

Section: CLI

Explanation

Explanation/Reference:

Booting from the Default Flash (Primary or Secondary)

The **boot** command boots the switch from the flash image that you are currently booted on, or the flash image that was set either by the **boot set default** command or by the last executed **boot system flash <primary | secondary>** command. This command also executes the complete set of subsystem self tests. You have the option of specifying a configuration file.

QUESTION 116

You must connect an E-MSM Access Point to a switch that supports the PoE+ (802.3at) standard. What is the maximum amount of power the AP will be able to receive from the switch?

- A. 20.0 watts
- B. 25.0 watts

- C. 30.0 watts
- D. 35.0 watts

Correct Answer: C

Section: Others

Explanation

Explanation/Reference:

QUESTION 117

You have successfully installed an HP PCM+ remote client on a network administrator's workstation. Which step is necessary to enable the client to access the PCM+ server?

- A. Add the administrator's user ID to the User Profiles in PCM+.
- B. Add the IP address of the workstation to the access.txt file on the PCM+ server.
- C. Add the workstation's subnet to the Managed Subnets list in the PCM+ discovery setup window.
- D. Add the IP address of the workstation to the Authorized Managers list on the switch that the PCM+ server uses as a seed device.

Correct Answer: B

Section: ProCurve Manager

Explanation

Explanation/Reference:

Installing Remote Clients

...

- Configure the PCM Server to allow access from the new Client station. *The PCM Server maintains an access.txt file that lists all authorized Clients permitted to log into the Server.*

QUESTION 118

What is an advantage of using a ring topology when designing an IRF stack using A-Series switches?

- A. Ring topologies can support more IRF ports.
- B. Ring topologies continue functioning when a member fails.
- C. Ring topologies can use multiple switch models.
- D. Ring topologies form the IRF virtual device more quickly.

Correct Answer: B

Section: IRF
Explanation

Explanation/Reference:
HP 5820X & 5800 Switch Series IRF Configuration Guide

IRF topologies

Create an IRF virtual device in daisy chain topology, or more reliably, ring topology.

In ring chain topology, the failure of one IRF link does not cause the IRF virtual device to split as in daisy chain topology. Rather, the IRF virtual device changes to a daisy chain topology without affecting network services.

<http://bizsupport1.austin.hp.com/bc/docs/support/SupportManual/c02648772/c02648772.pdf>

QUESTION 119

You enter the following command at the CLI of an HP E5412 zl Series switch:

```
Switch(config)# spanning-tree priority 3
```

Which Bridge Priority value is displayed when you enter show spanning-tree?

- A. 3
- B. 1536
- C. 3072
- D. 12288

Correct Answer: D

Section: Spanning tree protocol
Explanation

Explanation/Reference:

The priority range for an MSTP switch is 0-61440. However, this command specifies the priority as a multiplier (0 - 15) of 4096. That is, when one specifies a priority multiplier value of 0 - 15, the actual priority assigned to the switch is: **(priority-multiplier) x 4096**

For example, if one configures "2" as the priority-multiplier on a given MSTP switch, then the Switch Priority setting is 8,192.

QUESTION 120

By default, which criteria are used for load-sharing of Layer 3 traffic over aggregated links configured on HP A-Series switches?

- A. LACP flow classifiers
- B. TCP port number

- C. source and destination MAC address
- D. source and destination IP address

Correct Answer: D

Section: Link aggregation

Explanation

Explanation/Reference:

QUESTION 121

You enter the following command at the CLI of an HP E5406 zl Series switch with IP routing enabled:

```
Switch(config)# router rip  
Switch(rip)#
```

Which additional step is necessary to enable RIP functionality?

- A. Configure redistribution for all connected routes that must be advertised in RIP updates.
- B. Configure a static route to the nearest RIP peer.
- C. Enable RIP for every VLAN where the switch should send and receive RIP updates.
- D. Disable all other dynamic routing protocols.

Correct Answer: C

Section: IP routing

Explanation

Explanation/Reference:

QUESTION 122

Which HP E-Series switch models are chassis-based switches? (Select two.)

- A. E2910-48G al
- B. E3500-24G-PoE yl
- C. E5406-48G zl
- D. E6600-24G
- E. E8212 zl

Correct Answer: CE

Section: Switch models

Explanation

Explanation/Reference:

QUESTION 123

How does a switch with MSTP enabled learn the boundary between its MST region and another MST region?

- A. It receives a BPDU from a non-Root switch with a Bridge Priority identical to the Root Bridge Priority.
- B. It receives a BPDU from a switch with a different MST configuration.
- C. It sends a BPDU that is rejected by a neighboring switch.
- D. It receives a BPDU from a switch with a MAC address that is not in its MSTP forwarding table.

Correct Answer: B

Section: Spanning tree protocol

Explanation

Explanation/Reference:

MST region

A multiple spanning tree region (MST region) consists of multiple devices in a switched network and the network segments among them. These devices have the following characteristics:

- All are MSTP-enabled
- They have the same region name
- They have the same VLAN-to-instance mapping configuration
- They have the same MSTP revision level configuration
- They are physically linked with one another

QUESTION 124

Which routing protocol is classified as link-state?

- A. MPLS
- B. BGP
- C. OSPF
- D. RIP

Correct Answer: C
Section: IP routing
Explanation

Explanation/Reference:

QUESTION 125

You are installing HP E5400 zl Series switches at a site that requires all management sessions to be encrypted. If the site's administrators want to use the web interface for configuration and management, which management protocol must be implemented to meet these requirements?

- A. Telnet
- B. Secure Socket Shell (SSH)
- C. Secure Sockets Layer (SSL)
- D. Simple Network Management Protocol SNMP

Correct Answer: C
Section: Security
Explanation

Explanation/Reference:

QUESTION 126

Match each A-Series router with its description.

Select and Place:

Match each A-Series router with its description.

Router	Description
(place here)	ideal as a core router for a medium to small enterprise
(place here)	10G Core router with maximum switching capacity of 1.44Tb
(place here)	provides routing capabilities for SMBs and branch offices

A-MSR50

A6600

A8800

Correct Answer:

Match each A-Series router with its description.

Router	Description
A6600	ideal as a core router for a medium to small enterprise
A8800	10G Core router with maximum switching capacity of 1.44Tb
A-MSR50	provides routing capabilities for SMBs and branch offices

Section: Switch models
Explanation

Explanation/Reference:

QUESTION 127

Place the IRF Master election criteria in their correct priority order.

Select and Place:

Place the IRF Master election criteria in their correct priority order.

IRF Master election priority		Criteria
Order	Priority	
1	(place step one here)	lowest bridge MAC address
2	(place step two here)	current Master
3	(place step three here)	highest priority in stack
4	(place step four here)	longest system uptime

Correct Answer:

Place the IRF Master election criteria in their correct priority order.

IRF Master election priority		Criteria
Order	Priority	
1	current Master	
2	highest priority in stack	
3	longest system uptime	
4	lowest bridge MAC address	

Section: IRF**Explanation****Explanation/Reference:****HP 5820X & 5800 Switch Series IRF Configuration Guide****Master election**

Master election is held each time the topology changes, for example, when the IRF virtual device is established, a new member switch is plugged in, the master switch fails or is removed, or the partitioned IRF virtual devices merge.

The master is elected based on the following rules in descending order:

1. The current master, even if a new member has a higher priority. When an IRF virtual device is being formed, all member switches consider themselves as the master, this rule is skipped.
2. The member with a higher priority.
3. The member with the longest system up-time. The member switches exchange system up-time in the IRF hello packets.
4. The member with the lowest bridge MAC address

The IRF virtual device is formed on election of the master.

During an IRF merge, the switches of the IRF virtual device that fails the master election automatically reboot to join the IRF virtual device that wins the election.

After a master election, all subordinate member switches initialize and reboot with the configuration on the master, and their original configuration, even if it has been saved, is lost.

<http://bizsupport1.austin.hp.com/bc/docs/support/SupportManual/c02648772/c02648772.pdf>

QUESTION 128

Match each 802.11 standard with its description.

Select and Place:

Match each 802.11 standard with its description.

Match each wireless standard with its description.

Standard	Description
(place here)	supports transmission speeds up to 600 Mbps and is backward compatible
(place here)	supports transmission speeds up to 54 Mbps but is not backward compatible
(place here)	supports transmission speeds up to 54 Mbps and is backward compatible
(place here)	first widely adopted wireless standard; offers transmission speeds up to 11 Mbps

802.11a

802.11b

802.11g

802.11n

Correct Answer:

Match each 802.11 standard with its description.

Match each wireless standard with its description.

Standard	Description
802.11n	supports transmission speeds up to 600 Mbps and is backward compatible
802.11a	supports transmission speeds up to 54 Mbps but is not backward compatible
802.11g	supports transmission speeds up to 54 Mbps and is backward compatible
802.11b	first widely adopted wireless standard; offers transmission speeds up to 11 Mbps

Section: Wireless
Explanation

Explanation/Reference:

QUESTION 129

The table contains a list of the features of HP E-MSM APs. Each of these features is provided in either controlled or autonomous mode. Indicate which mode corresponds to each feature by matching the mode to the feature.

Select and Place:

Policy-based configuration from MSM700	(place here)
Opportunistic key caching (WPA2)	(place here)
Configured through access point serial port	(place here)
Operates as a stand-alone AP	(place here)

Controlled Autonomous

Correct Answer:

Policy-based configuration from MSM700	Controlled
Opportunistic key caching (WPA2)	Controlled
Configured through access point serial port	Autonomous
Operates as a stand-alone AP	Autonomous

Controlled Autonomous

Section: Wireless
Explanation

Explanation/Reference:

QUESTION 130

In order to enable SFTP on an E5400 zl Series switch, you must configure SFTP with a series of CLI commands. The matching table shows three commands. Only two of them are currently necessary to enable SFTP.

Indicate the optional command as well as the two commands in the order that they must be run by numbering them in the proper sequence.

Select and Place:

Drag and Drop

ip ssh
ip ssh filetransfer
crypto key generate ssh rsa bits 1024

1.

2.

Optional

Correct Answer:

Drag and Drop

1.

2.

Optional

Section: Security
Explanation

Explanation/Reference:

Syntax: [no] ip ssh

Enables or disables SSH on the switch.

[cipher <cipher-type>]

Specify a cipher type to use for connection.

Valid types are:

- *aes128-cbc*
- *3des-cbc*
- *aes192-cbc*
- *aes256-cbc*
- *rijndael-cbc@lysator.liu.se*
- *aes128-ctr*
- *aes192-ctr*
- *aes256-ctr*

Default: All cipher types are available.

*Use the **no** form of the command to disable a cipher type.*

[filetransfer]

*Enable/disable secure file transfer capability. SCP and **SFTP** secure file transfer will not function unless SSH is also enabled.*

QUESTION 131

Match the link aggregation term with the corresponding description.

Select and Place:

Bridge Aggregation	
Ether Channels	
Port Trunking	

The term for link aggregation on E-Series switches
The term for link aggregation on A-Series switches
The term for link aggregation on Cisco switches
The term for Dynamic Link Aggregation on all HP switches

Correct Answer:

Bridge Aggregation	The term for link aggregation on A-Series switches
Ether Channels	The term for link aggregation on Cisco switches
Port Trunking	The term for link aggregation on E-Series switches

The term for Dynamic Link Aggregation on all HP switches
--

Section: Link aggregation
Explanation

Explanation/Reference:
Bridge Aggregation - A-series
Trunk - E-series

QUESTION 132

When managing E5400 zl Series switches, it often becomes necessary to reset the configuration of a switch to factory defaults and/or reset all passwords. Match the action to the correct result of the action.

Select and Place:

Issue CLI command <i>erase startup-config</i> then restart switch if not done automatically.	
Press and hold the front panel Clear button for more than 1 second.	
Press front panel Reset and Clear buttons together. Release Reset and continue pressing Clear until Self Test LED flashes.	
	Erases passwords without erasing the startup configuration
	Erases passwords and startup configuration
	Erases the startup configuration without erasing the passwords

Correct Answer:

Issue CLI command <i>erase startup-config</i> then restart switch if not done automatically.	Erases the startup configuration without erasing the passwords
Press and hold the front panel Clear button for more than 1 second.	Erases passwords without erasing the startup configuration
Press front panel Reset and Clear buttons together. Release Reset and continue pressing Clear until Self Test LED flashes.	Erases passwords and startup configuration

Section: Security
Explanation

Explanation/Reference:
Front-Panel Security

Clear Button

Pressing the Clear button alone for one second resets the password(s) configured on the switch.

Reset Button

Pressing the Reset button alone for one second causes the switch to reboot.

Restoring the Factory Default Configuration

You can also use the Reset button together with the Clear button (Reset+Clear) to restore the factory default configuration for the switch. To do this:

1. Press and hold the Reset button.
2. While holding the Reset button, press and hold the Clear button.
3. Release the Reset button.
4. When the Test LED to the right of the Clear button begins flashing, release the Clear button.

It can take approximately 20-25 seconds for the switch to reboot. This process restores the switch configuration to the factory default settings.

How To Reset the startup-config and running-config Files to the Factory Default Configuration. This command reboots the switch, replacing the contents of the current startup-config and running-config files with the factory-default startup configuration.

Syntax: erase startup-config

For example:

```
ProCurve(config)# erase startup-config  
Configuration will be deleted and device rebooted, continue [y/n]?
```

Figure 6-3. Example of erase startup-config Command

Press **[y]** to replace the current configuration with the factory default configuration and reboot the switch. Press **[n]** to retain the current configuration and prevent a reboot.

In a redundant management system, this command erases the startup config file on both the active and the standby management modules as long as redundancy has not been disabled. If the standby management module is not in standby mode or has failed selftest, the startup config file is not erased.