

HP0-S44

Number: HP0-S44
Passing Score: 800
Time Limit: 120 min
File Version: 1.0

Version: 8.0



Exam A**QUESTION 1**

A customer is using an HP ProLiant BL460c Gen9 Server with HP FlexFabric 20Gb 2-port 650FLB and an HP c7000 BladeSystem Enclosure with Virtual Connect FlexFabric 20/40 F8 interconnect modules in bays 1 and 2. The integrator is configuring networks and server profiles in HP OneView and needs to attach a server blade to a VLAN 51. The integrator will tag proper ports on appropriate switches to take VLAN 51 to the enclosure. Which configuration will bring high-availability and fault tolerance against a server port and uplink port failures for VLAN 51?

- A. Network: Production_51 (VLAN ID 51) connected to uplink port Q1.1 on both interconnect modules through single uplink set.
Server profile: Connection ID 1 and 2 set to Production_51 network, port set to Auto
- B. Network: Production_51 (VLAN ID 51) connected to uplink ports Q1.1, Q1.2, Q1.3 and Q1.4 on both modules through a single uplink set.
Server profile: Connection ID 1 and 2 set to Production_51 network, ports set to FlexibleLOM 1 1-a and FlexibleLOM 1:1-c.
- C. Network: Production_51 (VLAN ID 51) connected to uplink ports Q1.1, Q1.2, Q1.3 and Q1.4 on interconnect module 1 through a single uplink set
Server profile: Connection ID 1 and 2 set to Production_51 network and port set to Auto.
- D. Two networks: Production_51_L (VLAN ID 51) connected to uplink ports Q1.1, Q1.2 Q1.3 and Q1.4 on interconnect module 1 through first uplink set. Production_51_R (VLAN ID 51) connected to uplink ports Q1.1, Q1.2, Q1.3 and Q1.4 on interconnect module 2 through second uplink set.
Server profile: Connection ID 1 set to Production_51_L network, port set to FlexibleLOM 1:1-a. Connection ID 2 set to Production_51_R network, port set to FlexibleLOM 1:1 -c.

Correct Answer: D

Section: (none)

Explanation



Explanation/Reference:

QUESTION 2

A customer is implementing a new rack solution in their datacenter. The racks will be supporting a variety of HP ProLiant Gen9 servers in each rack, and the racks will be sharing a common hot aisle due to space limitations. The customer is concerned about the amount of heat that will be generated. What should the integrator recommend to the customer for the installation of the racks?

- A. Verify that the ProLiant Gen9 servers have redundant fans installed in them.
- B. Verify that the backs of the racks are a minimum of 48 inches (121.9 cm) apart to allow for heat release.
- C. Verify that there are enough cooling vent tiles in the shared hot aisle.
- D. Verify that the rear rack doors are solid in order to deflect the heat up through the top of the rack.

Correct Answer: C

Section: (none)

Explanation

Explanation/Reference:

QUESTION 3

A customer has an HP FlexFabric 650FLB on an HP BL460c Gen9 running VMware ESXi 6.0. The integrator needs to upgrade the driver for this adapter to the latest version released by HP. To avoid a manual download, the integrator plans to use VMware Update Manager (VUM) to download the driver directly.

Where should the integrator point VMware Update Manager?

- A. HP Software Depot (<http://software.hp.com>)
- B. HP Software Delivery Repository (<http://vibsdepot.hp.com>)
- C. HP Live Network (<http://hpln.hp.com>)
- D. HP Driver and Downloads (<http://hp.com/go/support>)

Correct Answer: D

Section: (none)

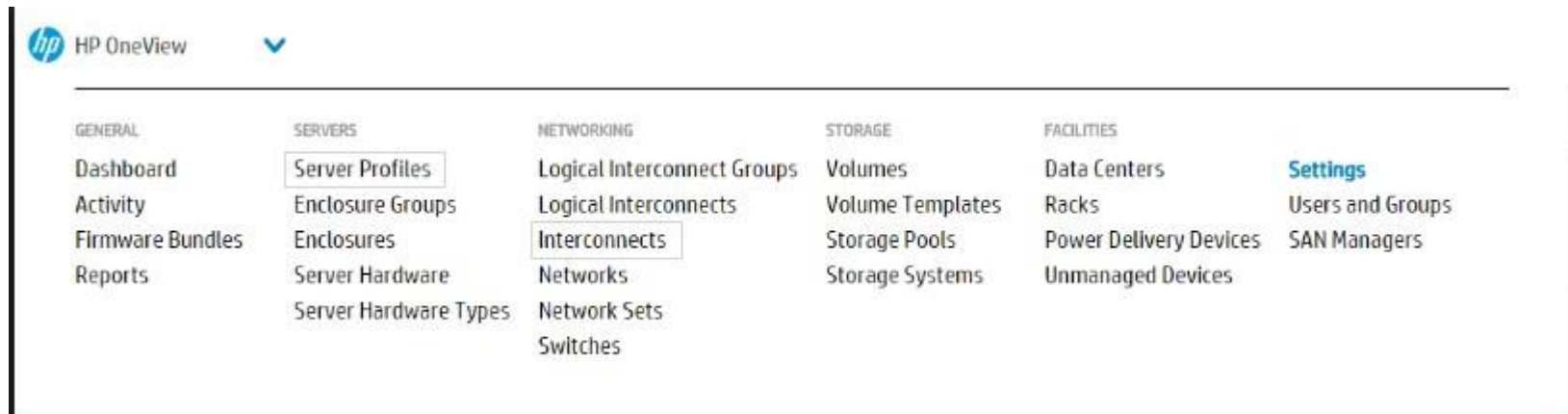
Explanation

Explanation/Reference:

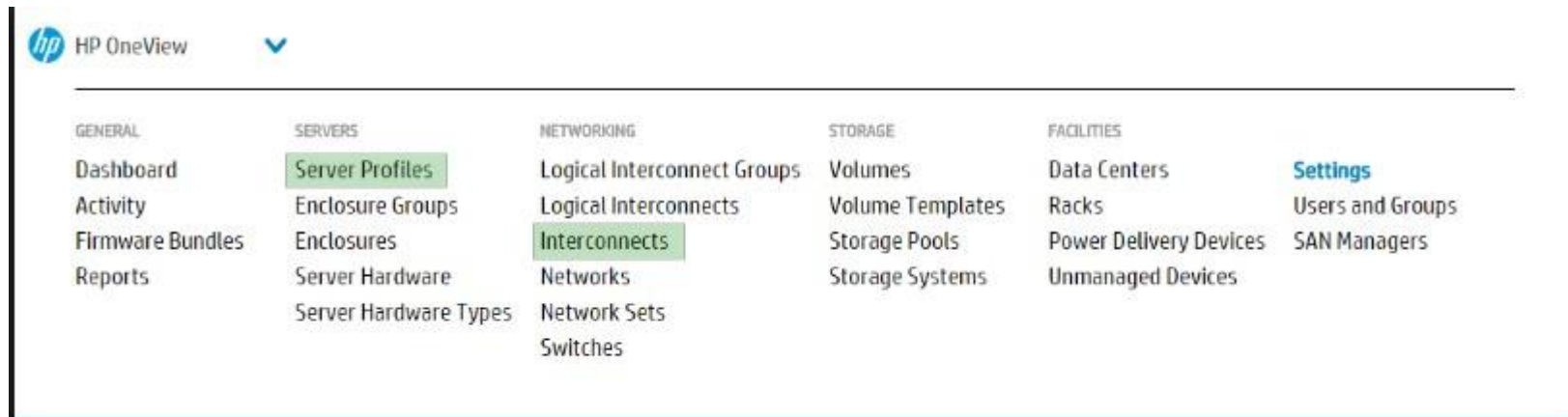
QUESTION 4

An administrator needs to add a custom MAC address range for HP OneView. Click the menu option to use to configure the custom range.

Hot Area:



Correct Answer:



Section: (none)
Explanation

Explanation/Reference:

QUESTION 5

A customer with HP ProLiant DL360 Gen9 servers needs to combine Fibre Channel over Ethernet (FCoE) with their LAN traffic over a single 10GbE connection.

Which FlexFabric adapter meets the customer's needs?

- A. HP FlexFabric 20GB 2-port 630FLB Adapter
- B. HP FlexFabric 10GB 2-port 556FLR-SFP+ Adapter
- C. HP FlexFabric 20GB 2-port 650FLB Adapter
- D. HP FlexFabric 650M 2-port Adapter

Correct Answer: B

Section: (none)

Explanation

Explanation/Reference:

QUESTION 6

Click and drag me HP Power Distribution Unit (PDU) model to its matching feature.

Select and Place:

HP iPDU	HP Managed PDU	HP PDU model	Feature
HP Basic PDU	HP Remote Monitored PDU		integrated power cord retention for iE outlets
			Intelligent Power Discovery
			load segment power monitoring with switchable load segments
			cost effective power distribution

Correct Answer:

		HP PDU model	Feature
		HP Managed PDU	integrated power cord retention for iE outlets
		HP iPDU	Intelligent Power Discovery
		HP Remote Monitored PDU	load segment power monitoring with switchable load segments
		HP Basic PDU	cost effective power distribution

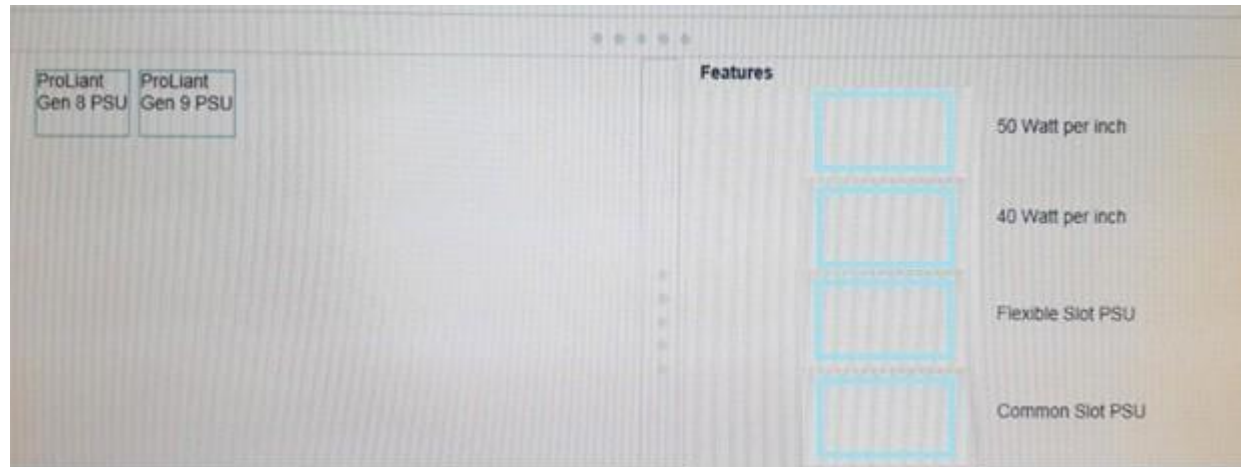
Section: (none)
Explanation

Explanation/Reference:

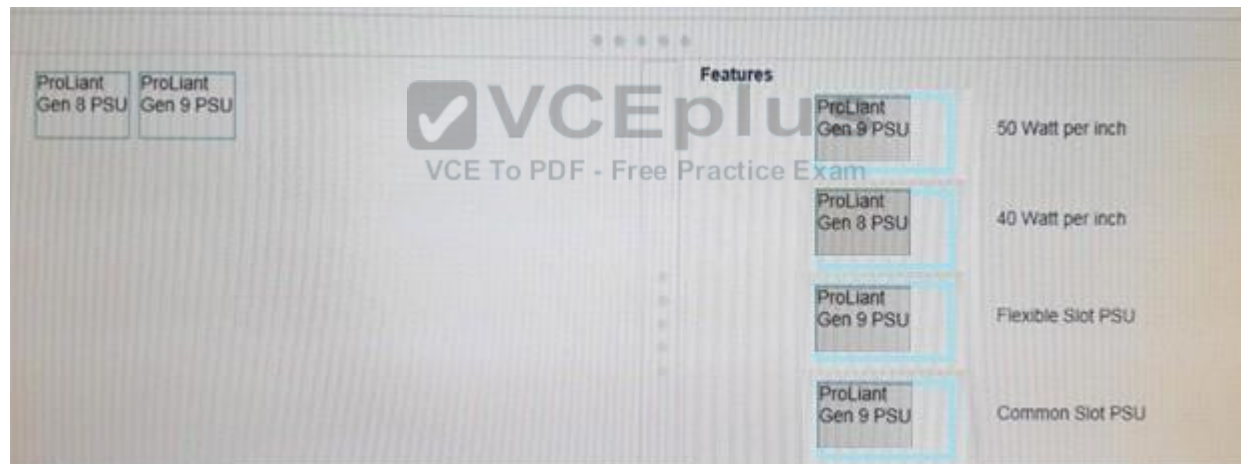
QUESTION 7

Click and drag each Power Supply Unit (PSU) to the feature that it supports. Note that PSUs may match more than one feature.

Select and Place:



Correct Answer:



Section: (none)

Explanation

Explanation/Reference:

QUESTION 8

A server integrator determines that power supply units (PSUs) are failing during the installation of new IT equipment at a specific customer site. Based on the HP 6-Step Troubleshooting Methodology, what should the integrator do?

- A. Verify the current rating of the fuse feeding the power outlet.
- B. Verify the utility voltage at the outlet before plugging the power cord of the PSU into that outlet
- C. Check the data center site for electromagnetic radiation (EMC).
- D. Test new hardware in a staging area before installing the hardware in the computer room.

Correct Answer: B

Section: (none)

Explanation

Explanation/Reference:

QUESTION 9

Which capability can Turbo Boost Technology provide?

- A. increase the memory bandwidth of the server
- B. increase the speed of SSD write operations
- C. increase the FlexLOM bandwidth
- D. increase the frequency of the processor

Correct Answer: D

Section: (none)

Explanation

Explanation/Reference:

QUESTION 10

A customer is implementing HP Location Discovery Services to manage and monitor power consumption in the data center. The customer has purchased HP iPDU units for some cabinets.

Which guideline must the integrator follow when installing the new PDUs into the existing racks?

- A. HP Intelligent Series Racks are required for the company to use HP Power Discovery Service.
- B. HP Location Discovery Services must be implemented to use Remote Monitored PDUs.
- C. Gen8 servers and above are required as the minimum server level.
- D. A minimum version of iL03 must be used to implement HP Location Discovery Services.

Correct Answer: A

Section: (none)

Explanation**Explanation/Reference:****QUESTION 11**

A customer's design includes a 40GB uplink to their data center network.

Which ports on the HP Virtual Connect FlexFabric-20/40 F8 module should the integrator use to connect the uplinks?

- A. ports X1 through X4
- B. ports X7 and X8
- C. ports Q1 through Q4
- D. ports X5 and X6

Correct Answer: C

Section: (none)

Explanation**Explanation/Reference:****QUESTION 12**

An integrator needs to install two new rows of server racks in a data center.

What is the minimum space required from the back of a rack to the back of the next closest rack.

- A. 25 in (63.5 cm)
- B. 30 in (76.2 cm)
- C. 48 in (121.9 cm)
- D. 54 in (137.16 cm)

Correct Answer: B

Section: (none)

Explanation**Explanation/Reference:****QUESTION 13**

A company needs servers to implement Virtual Extensible LAN (VXLAN), an overlay networking technology. How do HP FlexFabric 556 series adapters enhance functionality for these servers?

- A. They offload the VXLAN processing from the hypervisor, freeing the hypervisor for other functions.
- B. They convert VXLAN to a proprietary HP Layer 2 overlay technology, which provides better resiliency.
- C. They use HP SSD Smart Path to calculate whether it is more efficient to store VXLAN data on an SSD or HDD.
- D. They calculate the shortest network path for the VXLAN traffic based on the current state of the network.

Correct Answer: A

Section: (none)

Explanation

Explanation/Reference:

QUESTION 14

A system Integrator is installing two HP ProLiant BL460c Gen9 servers in an HP c7000 BladeSystem Enclosure that is managed by HP OneView. The enclosure has two HP Virtual Connect Flex-10 Ethernet modules that are used to provide network connectivity for the blades. After the integrator completes the installation, one of the new servers is able to connect to the network, but the other cannot.

Following the HP 6-step Troubleshooting Methodology, the integrator checks the downlink port statuses of the problem blade in HP OneView and finds that the ports show a status of "Unlinked - Pause Flood Detected".

Which two steps should the integrator take to add to the Optimized Action Plan to resolve this problem? (Select two.)

- A. Reset pause flood protection from the Actions menu on the Interconnects screen in HP OneView.
- B. Resolve the issue with the NIC on the server generating the pause flood. This might include updating the NIC firmware and device drivers.
- C. Reset pause flood protection from Advanced Ethernet Settings in Virtual Connect Manager.
- D. Create and assign a new server profile in HP OneView for the server generating the pause flood.
- E. Reset pause flood protection from the Actions menu on the Enclosures screen in HP OneView.

Correct Answer: BC

Section: (none)

Explanation

Explanation/Reference:

QUESTION 15

A customer's initial design included HP ProLiant DL380 Gen9 servers with the default B140i Smart Array Controller and 6 SATA disk drives. Before the integrator installed the designed solution, the customer changed the requirements to SAS based internal disk drives and support for RAID 6 and ADM.

Which additional HP component should the integrator recommend to meet the customer's changed requirements?

- A. HP 12Gb SAS Expander
- B. HP Smart Storage Battery

- C. HP Smart Array P244br Controller
- D. HP Smart Array P440ar Controller

Correct Answer: D

Section: (none)

Explanation

Explanation/Reference:

QUESTION 16

Which tool displays a graphical end-to-end view of a Virtual Connect networking environment?

- A. HP OneView for VMware vCenter
- B. HP Onboard Administrator
- C. HP Insight Control server deployment
- D. HP Intelligent Provisioning

Correct Answer: A

Section: (none)

Explanation

Explanation/Reference:



QUESTION 17

Server administrators are choosing between HP Intelligent Provisioning and HP Insight Control server provisioning (ICsp) for installing operating systems (OS) on servers.

Which difference between the tools should affect their decision?

- A. HP Intelligent Provisioning is not available on Gen9 servers; ICsp is available on Gen9 servers.
- B. HP Intelligent Provisioning requires servers to have network connectivity before the installation, ICsp does not have this requirement.
- C. HP Intelligent Provisioning supports only Windows OS installation, ICsp supports Windows, VMware ESXi, and Linux OS.
- D. HP Intelligent Provisioning installs an OS on an individual server, HP ICsp can deploy OS to multiple servers.

Correct Answer: D

Section: (none)

Explanation

Explanation/Reference:

QUESTION 18

An integrator is installing a DL380 Gen9 server for a customer who will be using this server for their large data base. The customer needs maximum memory capacity. Which type of HP memory should the integrator choose?

- A. Hybrid DIMMs
- B. RDIMMs
- C. NVDIMMs
- D. LRDIMMs

Correct Answer: D

Section: (none)

Explanation

Explanation/Reference:

QUESTION 19

An integrator is troubleshooting a problem with an HP Virtual Connect FlexFabric 10Gb/24-Port module in an HP c7000 BladeSystem Enclosure that is managed by HP OneView.

How should the integrator collect logs from the HP Virtual Connect FlexFabric module to provide to HP Technical Support?

- A. Create Virtual Connect support dump from Virtual Connect Manager (VCM)
- B. Run the report command from Virtual Connect Support Utility (VCSU)
- C. Create logical interconnect support dump from HP OneView.
- D. Create appliance support dump from HP OneView.

Correct Answer: C

Section: (none)

Explanation

Explanation/Reference:

QUESTION 20

What are two advantages of UEFI when compared to legacy BIOS? (Select two.)

- A. it provides enhanced memory performance
- B. it provides enhanced security with support for Secure Boot

- C. it enables booting from hard drives larger than 2.2TB
- D. it provides IPv4 PXE boot support only
- E. it provides customers the ability to create vPars

Correct Answer: BC

Section: (none)

Explanation

Explanation/Reference:

QUESTION 21

An integrator has installed Windows on an HP ProLiant DL380 Gen9 server. The integrator needs to perform a validation of the running system and capture the current configuration.

Which tool should the integrator use?

- A. HP Active Health System (AHS)
- B. HP Integrated Management Log Viewer
- C. HP System Update Manager (SUM)
- D. HP Insight Diagnostics Online edition

Correct Answer: A

Section: (none)

Explanation

Explanation/Reference:

QUESTION 22

What is the sequence to power on and power off a ProLiant server with external storage?

- A. Power down the storage first; power on the storage first.
- B. Power down the ProLiant first; power on the storage first.
- C. Power down the storage first, power on the storage first.
- D. Power down the ProLiant first; power on the ProLiant first.

Correct Answer: B

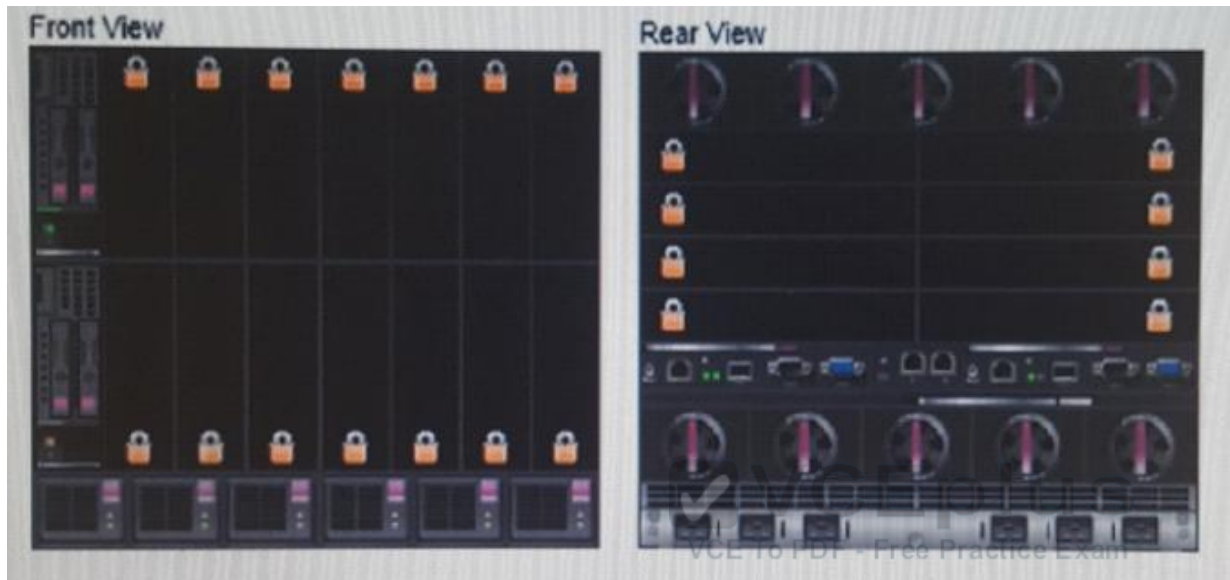
Section: (none)

Explanation

Explanation/Reference:

QUESTION 23

Refer to the exhibit.



A customer is using an HP c7000 BladeSystem Enclosure and has created a new user account for daily operations. After logging in to HP Onboard Administrator, the customer is unable to view some of the server blades as they are obscured by lock icons as shown.

What is the likely cause of this behavior?

- A. The new user account was configured using a low Privilege Level.
- B. The affected server bays are not populated.
- C. The affected server Days are not configured for SSO (single sign-on) from HP Onboard Administrator.
- D. The new user account was configured with limited Device Bay Access.

Correct Answer: D

Section: (none)

Explanation

Explanation/Reference:

QUESTION 24

What is a benefit of HP integrated Lights-Out (iLO4)?

- A. It automates server, storage, and other HP Converged Infrastructure management using scripting toolkit.
- B. It lowers the risk of unplanned downtime through features such as Active Health and Dynamic Power Capping.
- C. It integrates HP ProLiant Servers with private, public, and hybrid cloud solutions.
- D. It lowers the risk of data breaches through features such as HP Secure Boot and HP SSD Smart Path.

Correct Answer: A

Section: (none)

Explanation

Explanation/Reference:

QUESTION 25

A customer needs to use pass-through Ethernet modules in order to connect their BL460c Gen8 server blades to their internal network infrastructure. Which interconnect bays should the integrator use to connect to the onboard FlexibleLOM adapters?

- A. interconnect bays 5 / 6
- B. interconnect bays 3 / 4
- C. interconnect bays 7 / 8
- D. interconnect bays 1 / 2



Correct Answer: D

Section: (none)

Explanation

Explanation/Reference:

QUESTION 26

An integrator finds that the AMP Status LED on a server System Insight Display is solid amber. What should the integrator do?

- A. Activate AMP through HP Intelligent Provisioning.
- B. Replace the DIMM that has failed.
- C. Enable HP Secure Encryption to protect the server data.
- D. Correct the invalid AMP configuration.

Correct Answer: B

Section: (none)

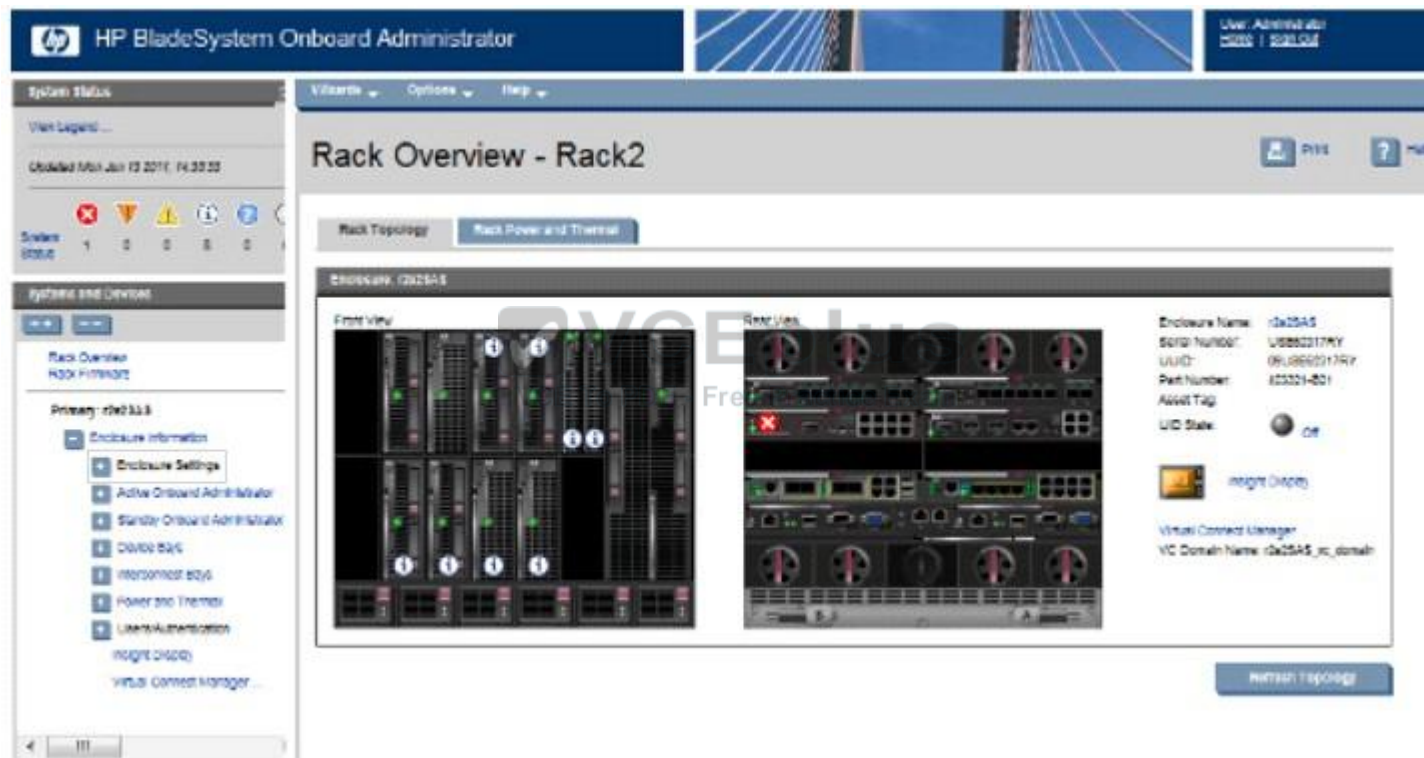
Explanation

Explanation/Reference:

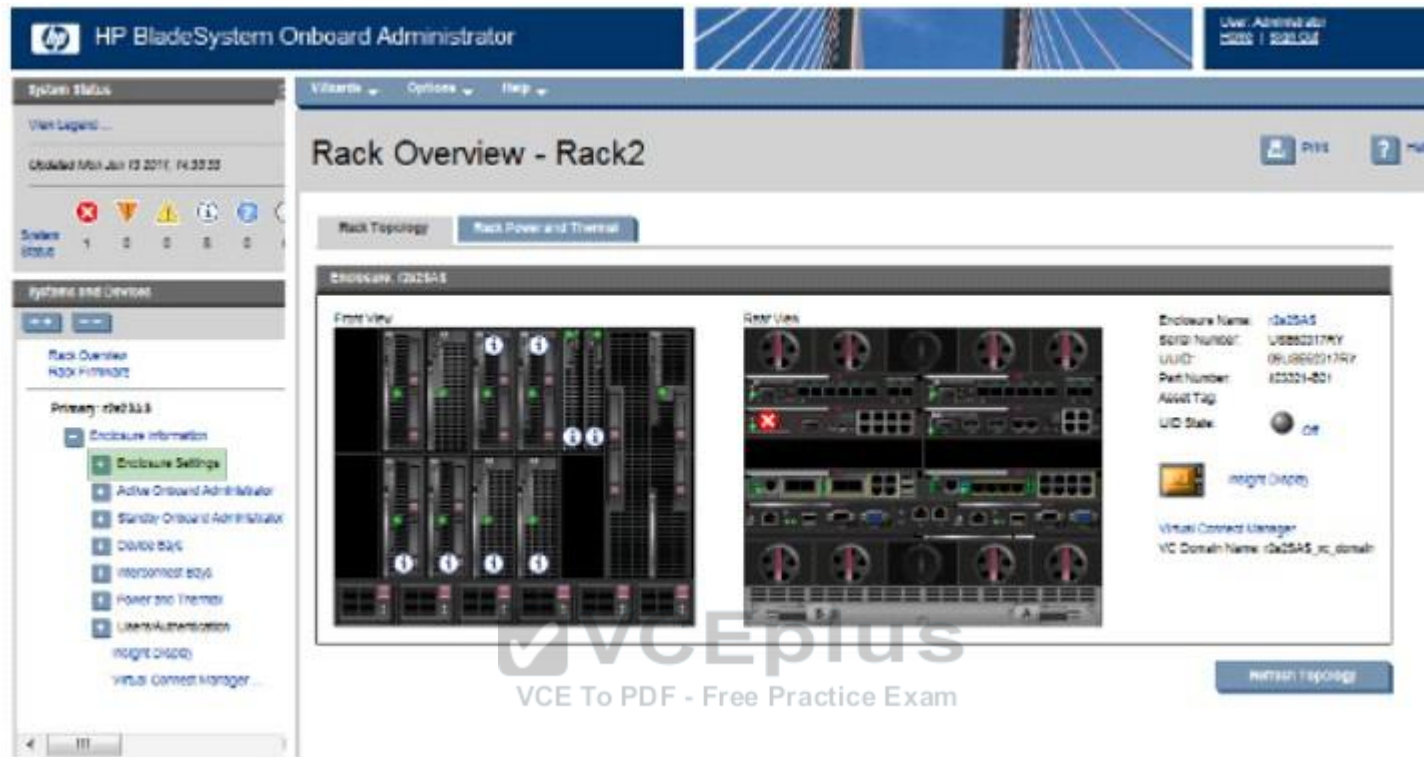
QUESTION 27

A server integrator needs to perform an ad-hoc backup of the HP BladeSystem Enclosure configuration. Click the menu option in the graphical user interface that can be used to most efficiently perform this task.

Hot Area:



Correct Answer:



Section: (none)

Explanation

Explanation/Reference:

QUESTION 28

An integrator needs to choose a Smart Array controller model that meets the following customer requirements:

- *Supports 12 Gb SAS for Gen9 servers
 - *Provides premium capabilities for HP ProLiant Gen9 DL servers
- Which Smart Array controller should the integrator choose?

- A. HP Smart Array P741m Controller
- B. HP Smart Array P830 Controller
- C. HP Smart Array P840 Controller

D. HP Smart Array P731 Controller

Correct Answer: C

Section: (none)

Explanation

Explanation/Reference:

QUESTION 29

A server integrator needs to script the configuration of the server profiles using HP OneView. Which API should the integrator use?

- A. REST
- B. RPC
- C. XML-RPC
- D. SOAP

Correct Answer: A

Section: (none)

Explanation

Explanation/Reference:



QUESTION 30

A customer has chosen to use HP RDMA over Converged Ethernet (RoCE) on HP ProLiant Gen9 BL servers. Which interconnect module should the integrator install to support RoCE?

- A. HP Virtual Connect 8Gb 20-Port Fibre Channel Modules
- B. HP 6Gb SAS BL Switches
- C. HP 6125XLG Ethernet Blade Switches
- D. HP Virtual Connect Flex-10/10D Modules

Correct Answer: D

Section: (none)

Explanation

Explanation/Reference: