

HP HP0-J73 Questions & Answers

Number: HP0-J73
Passing Score: 800
Time Limit: 120 min
File Version: 30.4

VCEplus.com

HP HP0-J73 Questions & Answers

Exam Name: Foundations of HP Storage Solutions



Examsoon

QUESTION 1

An enterprise customer is planning a tape backup system. They want to implement an open format technology that uses linear recording. Which tape technology should they implement?

- A. LTO
- B. SDLT
- C. AIT
- D. DAT

Correct Answer: A

Section: (none)

Explanation

Explanation/Reference:

QUESTION 2

Which benefits does HP federated storage provide? (Select two.)

- A. simplified hardware maintenance
- B. ability to shift workloads at any time
- C. full utilization of arrays for efficient capacity pooling
- D. converged networking to reduce cabling costs
- E. standardized platforms to simplify operations

Correct Answer: BC

Section: (none)

Explanation

Explanation/Reference:

QUESTION 3

A customer needs to implement an enterprise storage solution with the lowest cost per gigabyte. Which drive technology should the customer use?

- A. SATA
- B. ATA-II

- C. SAS
- D. SCSI

Correct Answer: C

Section: (none)

Explanation

Explanation/Reference:

QUESTION 4

Which deduplication method is used by inline deduplication devices?

- A. object differencing
- B. zone level
- C. byte-level-delta
- D. hash-based chunking

Correct Answer: D

Section: (none)

Explanation

Explanation/Reference:

QUESTION 5

A leading retail, corporate and investment bank, serves about 15 million customers within Central and Eastern Europe. They need an archiving solution to comply with the regulations. Which HP solution should you select for this task?

- A. HP Interactive Archive Portal
- B. HP Internet Archive Platform
- C. HP Integrated Archive Portal
- D. HP Integrated Archive Platform

Correct Answer: D

Section: (none)

Explanation

Explanation/Reference:

QUESTION 6

An international logistics company needs a fast data protection solution. They have a head office and more than 30 branch offices world-wide. They also require low-bandwidth replication to their head office. Which HP storage solution fits these requirements?

- A. One HP StoreOnce 4420 per site
- B. One HP StoreOnce 4220 per site
- C. One HP StoreEver MSL 4048 per site
- D. One HP StoreEver MSL 2024 per site

Correct Answer: A

Section: (none)

Explanation

Explanation/Reference:

QUESTION 7

Your customer has two sites and you have selected to use the HP P2000 MSA storage array as their storage solution. You plan to implement remote snapshot replication between these sites. Which controller does not support this functionality?

- A. HP P2000 G3 iSCSI MSA controller
- B. HP P2000 G3 SAS MSA Controller
- C. HP P2000 G3 Fibre Channel MSA Controller
- D. HP P2000 G3 MSA FC/iSCSI Combo MSA Controller

Correct Answer: B

Section: (none)

Explanation

Explanation/Reference:

QUESTION 8

Your customer is a medium-sized law firm, with approximately 500 employees. They are beginning an infrastructure and backup upgrade project and have provided you with the infrastructure of their environment. • Approximately 65 Windows hosts comprising of physical and virtual servers • 2 Exchange servers – 2 TB total storage • 4 SQL Servers – 1 TB total storage • Document management system – 4 TB total storage • Disk Storage : CLARiiON CX3-20c iSCSI storage with 40 TB useable storage • Backup Target Devices : 5 x 5Tb Exagrid EX5000s and an ADIC Scalar i500 with 3 x LTO3 • Current backup Software: HP Data Protector • Backup regime Monday – Thursday; Friday - Full backup of all systems is performed totaling approximately 20 TB. • Monthly backup size is a duplicate of Friday but will also duplicate to tape. The Data on the tape must be encrypted for legal reasons. • Full Exchange Servers • Incrementals for file systems and document management - Management System - 4.5TB The customer regularly

tests their DR procedures at a remote off-site facility utilizing a number of stand-alone devices to recover the data.

The customer has asked you to specify a replacement storage and tape solution allowing for data growth and expansion of approximately 20% per annum. The storage solutions must be optimized for database and email applications as well as virtualized servers while enabling the customer to scale both capacity and performance linearly without incurring downtime or performance bottlenecks. What method of encryption key management best suits the customer requirements?

- A. HP Secure Key Manager
- B. backup software managed (Data Protector)
- C. HP MSL Encryption Kit
- D. HP 1/8 G2 Encryption Kit

Correct Answer: B

Section: (none)

Explanation

Explanation/Reference:

QUESTION 9

Which HP storage solution best fits the customer requirements?

- A. HP StoreSure
- B. HP StoreVirtual
- C. HP StoreAll
- D. HP StoreEasy

Correct Answer: D

Section: (none)

Explanation

Explanation/Reference:

QUESTION 10

A company needs a solution that provides storage only as needed. The company's goal is to reduce capital expenditures and lower the power and cooling overhead to reduce operating expenditures. Which type of storage implementation meets these requirements?

- A. Thin provisioning
- B. Scale-out storage arrays

- C. Scale-up storage servers
- D. Virtual storage arrays

Correct Answer: D

Section: (none)

Explanation

Explanation/Reference:

QUESTION 11

A customer wants to upgrade their backup architecture and is considering a backup-to-tape solution. They want to achieve the highest performance possible with this solution. Which critical performance factor should they consider when choosing a tape device?

- A. The ability to keep the device streaming
- B. The capacity of the tape cartridges
- C. The type of backup software being used
- D. The type of data to be backed up

Correct Answer: A

Section: (none)

Explanation

Explanation/Reference:

Device streaming and concurrency

What is device streaming?

To maximize a device performance, it must be kept streaming. A device is streaming if it can feed enough data to the medium to keep the medium moving forward continuously. Otherwise, the medium tape has to be stopped while the device waits for more data. In other words, if the rate at which data is written to the tape is less than or equal to the rate which data can be delivered to the device by the computer system, then the device is streaming. In network-focused backup infrastructures, this deserves attention. For local backups, where disks and devices are connected to the same system, a concurrency of 1 may suffice if your disks are fast enough.

How to configure device streaming

To allow the device to stream, a sufficient amount of data must be sent to the device. Data Protector accomplishes this by starting multiple Disk Agents for each Media Agent that writes data to the device.

QUESTION 12

Which feature of SNMP defines the structure of the SNMP response relative to a device subsystem?

- A. SNMP agent
- B. Management Information Base (MIB)
- C. SNMP manager
- D. SNMP trap

Correct Answer: B

Section: (none)

Explanation

Explanation/Reference:

QUESTION 13

A company uses Fibre Channel over Internet Protocol (FCIP) to connect their Fibre Channel fabrics into a unified, single-fabric SAN. The company requires high availability and performance in their storage environment. Which type of inter-switch link (ISL) configuration should the company implement?

- A. Split-site link
- B. Shared link
- C. Single link
- D. Dual link

Correct Answer: D

Section: (none)

Explanation

Explanation/Reference:

QUESTION 14

What is the effect of using deduplication together with remote replication?

- A. Reduced volume of data to be transferred across a low-bandwidth network
- B. Increased number of disks required to store the data at a remote location
- C. Increased security of the data that is transferred across an insecure network
- D. Reduced risk of corruption during transfer of the data to a remote location

Correct Answer: A

Section: (none)

Explanation

Explanation/Reference:

<http://searchdatabackup.techtarget.com/feature/Using-remote-replication-and-data-deduplication-technology-to-back-up-branch-office-data>

QUESTION 15

A company is planning to implement a disaster recovery site. The site must provide highest level of data availability, with minimal latency. Which type of replication should the company use?

- A. IP-based asynchronous
- B. Fibre Channel asynchronous
- C. IP-based synchronous
- D. Fibre Channel synchronous

Correct Answer: D

Section: (none)

Explanation

Explanation/Reference:

QUESTION 16

Which feature of SMI-S enables logical unit numbers (LUNs) to be created for HP storage?

- A. Service Location Protocol (SLP)
- B. Web-based Enterprise Management (WBEM)
- C. Common Information Model (CIM)
- D. Storage Profiles

Correct Answer: C

Section: (none)

Explanation

Explanation/Reference:

About the Common Information Model (CIM)

CIM provides the data model for SMI-S with a common definition of management information for systems, networks, applications and services, and allows for vendor extensions. It provides a consistent data definition and structure, using object-oriented programming techniques.

The standard language used to define elements of CIM is Managed Object Format (MOF). Unified Modeling Language (UML) is used to create a graphical representation (using boxes and lines) of objects and relationships.

SMI-S uses the industry standard Common Information Model (CIM), which provides access to a robust set of attributes and behavior about the devices under its control. This next-generation storage management tool enables a consistent display of information from widely differing storage systems. The SMI-S data model consists of several classes, each of which describes a particular type of SAN devices, including disk arrays or FibreChannel switches. The data model enables retrieval of a broad range of information about a device, including:

- Physical attributes
- Current health status
- Total capacity

Users can also manage and control devices, including:

- LUN creation
- Enable or disable specific ports

CIM also makes it possible to obtain information about device status, including:

- Device health
- Percent of capacity remaining

QUESTION 17

What are the best types of ports used in a Fibre Channel SAN? (Select three)

- A. E_Port
- B. F_Port
- C. H_Port
- D. A_Port
- E. N_Port
- F. J_Port

Correct Answer: ABE

Section: (none)

Explanation

Explanation/Reference:

You can configure a Fibre Channel port as an F_Port, FL_Port, E_Port, or EX_Port (Fibre Channel routing), and configure a GbE port as a VE_Port (FCIP) or VEX_Port (FCIP with Fibre Channel routing).

Note: The 16 Gb/s port blades do not support FL ports.

Traffic switching is supported between the following port types:

- Fibre Channel switching (F_Port, FL_Port, E_Port)
- Fibre Channel switching and Fibre Channel routing (F_Port, FL_Port, EX_Port)
- Fibre Channel switching and FCIP (F_Port, FL_Port, VE_Port, VEX_Port)
- Fibre Channel routing and FCIP (VE_Port, VEX_Port)

Note: VEX_Ports and EX_Ports cannot be connected to the same edge fabric.

QUESTION 18

Which hash-based algorithm for storage deduplication provides the lowest risk for hash collisions?

- A. AES-256
- B. SHA-1
- C. MD5
- D. CRC32

Correct Answer: B

Section: (none)

Explanation

Explanation/Reference:

QUESTION 19

A system administrator wants to add five external juke boxes with four disks each to the wide SCSI controller of a server. The internal boot disks and CD-ROM are installed on a second controller. How many additional LUNs will be visible on the server after connecting the juke boxes

- A. 4
- B. 5
- C. 20
- D. 25

Correct Answer: C

Section: (none)

Explanation

Explanation/Reference:

Logical unit numbers

Each SCSI ID device can be broken down into logical unit numbers (LUNs). The number of LUNs available depends on the number of available data lines, as follows:

- 8 (LUNs 0 to 7) for Narrow SCSI
- 16 (LUNs 0 to 15) for Wide SCSI

Each disk in a device can be addressed independently through LUNs (a four-disk CD jukebox could be assigned LUN 0 to 3).

Example

A CD-ROM storage system that contains six individual CD-ROM drives is addressed logically as a single SCSI device and requires only one SCSI ID. The individual CD-ROM drives are addressed using LUNs. Consequently, it is possible to daisy chain up to 7 (15 for Wide) CD-Rom expansion units (containing a total of 42 CD-ROM drives) on a single SCSI bus.

QUESTION 20

A system administrator is managing a massively-scalable high-performance storage system. The administrator needs to create virtual private arrays with advanced workload segregation without compromising performance. Which feature of converged utility storage enables the administrator to accomplish this task?

- A. Multitenancy
- B. Autonomic tiering
- C. Storage orchestration
- D. Autonomic management

Correct Answer: A

Section: (none)

Explanation

Explanation/Reference:

Converged utility storage takes advantage of specialized architectures to deliver unique capabilities such as multitenancy, autonomic management, and autonomic storage tiering within a massively scalable, high-performance storage system. These are tier 1 storage platforms built on a clustered architecture designed for large-scale implementations.

- Multitenancy enables the creation of Virtual Private Arrays (VPAs) with advanced workload segregation for massive consolidation capabilities without sacrificing performance
- Autonomic management and storage tiering capabilities balance cost and performance while dramatically reducing administration time.
- Integration with HP Data Center Orchestration Software and HP CloudSystem provides a simplified path to the cloud.
- Storage born for the cloud—designed to boost efficiency in public and private cloud employments.

QUESTION 21

A company has deployed a large tie share, and expects 100 GB of new or changed data each day. The company would like to backup all objects in the file share and restore the share as quickly as possible. The company would share and restore the share as quickly as possible. Which technology should the company use?

- A. Incremental backups
- B. Synthetic full backups
- C. differential backups
- D. Full backups

Correct Answer: B

Section: (none)

Explanation

Explanation/Reference:

QUESTION 22

What is the purpose of LUN presentation?

- A. To enable/disable a specific host to access a LUN

- B. To allow tape devices to access data on a LUN
- C. To prevent large I/O reads from disk devices
- D. To create shared folders on Ethernet-attached storage

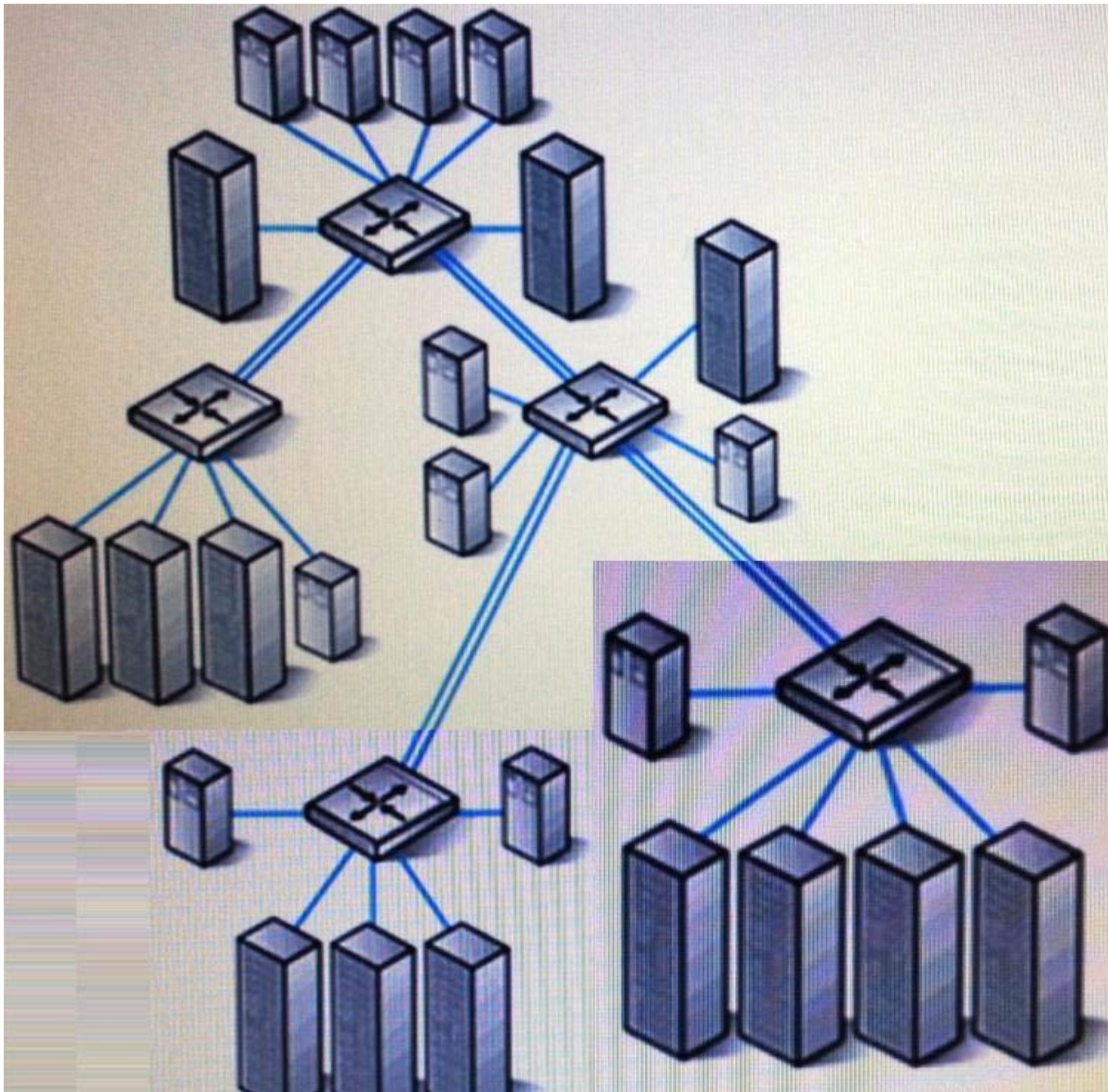
Correct Answer: A

Section: (none)

Explanation

Explanation/Reference:

QUESTION 23



Channel-based SAN in their data center based on 2 GB SAN switches. The switches are connected as shown in the exhibit. Which SAN topology is described by this configuration?

- A. Core-edge
- B. Ring
- C. Mesh
- D. Cascade

Correct Answer: D

Section: (none)

Explanation

Explanation/Reference:

QUESTION 24

- A.
- B.
- C.
- D.

Correct Answer:

Section: (none)

Explanation

Explanation/Reference:

QUESTION 25

A system administrator is configuring an array with 48 drives. The array stores mission-critical data for an application that requires large logical volumes. The array must support simultaneous failures of any two drives without downtime or data loss. How must the RAID level be configured to meet these requirements?

- A. RAID0
- B. RAID 1+0
- C. RAID 5
- D. RAID 6

Correct Answer: D

Section: (none)

Explanation

Explanation/Reference:

QUESTION 26

Which component is the same for both SAS and SATA drive technologies?

- A. Single chain terminator
- B. Signal encoding/decoding processor
- C. Driver model transparent to parallel ATA
- D. Electrical and physical interface

Correct Answer: D

Section: (none)

Explanation

Explanation/Reference:

QUESTION 27

Which benefits do autonomic management and storage tiering provide? (Select two.)

- A. Increased data control
- B. Reduced power consumption
- C. Increased storage capacity
- D. Lower total cost of ownership
- E. Reduced administration time

Correct Answer: DE

Section: (none)

Explanation

Explanation/Reference:

QUESTION 28

A company produces petabytes of data and the amount increases daily. They require a storage solution that can scale storage capacity and processing power as the data increases. Which type of storage solution should the company consider?

- A. Scale-through controllers with multi-connection DAS disk enclosures
- B. Scale-out SAN with converged utility storage
- C. Scale-over NAS with monolithic storage platforms
- D. Scale-up SAN with dedicated storage controllers

Correct Answer: B

Section: (none)

Explanation

Explanation/Reference:

QUESTION 29

A mid-sized company with a small virtual tape library needs to implement a low-cost deduplication strategy. The data to be backed up is in a variety of formats and is not mission-critical. Which deduplication technology meets this company's requirements?

- A. Hash-based chunking
- B. Object-level differencing
- C. Post-copy comparison
- D. Host-level file swapping

Correct Answer: A

Section: (none)

Explanation

Explanation/Reference:

QUESTION 30

In addition to performing backup-to-disk, for which other operation can an HP StoreOnce NAS share be used?

- A. To host application libraries
- B. To seed an appliance for replication
- C. As a mail server data store
- D. As a drag and drop file repository

Correct Answer: B

Section: (none)

Explanation

Explanation/Reference:

QUESTION 31

What is a main difference between Small Form Factor Pluggable (SFP) and Small Form Factor Pluggable plus (SFP+) modules?

- A. Port density
- B. Physical size
- C. Maximum transfer rate
- D. Different pinout

Correct Answer: C

Section: (none)

Explanation

Explanation/Reference:

QUESTION 32

A customer needs to connect a dedicated file sharing storage device to an existing LAN infrastructure at an affordable cost. Which type of storage solution meets these requirements?

- A. NAS
- B. VLS
- C. SAN
- D. DAS

Correct Answer: A

Section: (none)

Explanation

Explanation/Reference:

QUESTION 33

A customer has an HP D6000 Disk Enclosure with 70 LFF Universal SAS drives. Assuming that the mean time between failure (MTBF) of a single disk is 1,400,000 hours, what is the MTBF of the full array?

- A. 20,000 hours
- B. 40,000 hours

- C. 700,000 hours
- D. 1,400,000 hours

Correct Answer: A

Section: (none)

Explanation

Explanation/Reference:

QUESTION 34

A system administrator needs to locate storage resources on an IP network by using an iSCSI initiator to query for a list of targets. What should the administrator use to accomplish this goal?

- A. Domain Name Server (DNS)
- B. Internet Storage Name Service (iSNS)
- C. Light weight Directory Access Protocol (LDAP)
- D. Information Transfer Channel (ITC)

Correct Answer: B

Section: (none)

Explanation

Explanation/Reference:

QUESTION 35

What is one of the key advantages of converged network adapter (CNA)?

- A. Greater available bandwidth
- B. Faster data transfer rate
- C. Multiple traffic types share the same link
- D. Standardized connector for all components

Correct Answer: C

Section: (none)

Explanation

Explanation/Reference:

QUESTION 36

A company needs to comply with regulatory requirements to keep all financial data for long periods of time. What should the company implement?

- A. Data backups
- B. Snapshots
- C. Tape rotations
- D. Data archives

Correct Answer: D

Section: (none)

Explanation

Explanation/Reference:

QUESTION 37

The system administrator plans to migrate a RAID 1 volume to RAID 5. What is required to migrate the volume successfully?

- A. Sufficient unused drive space
- B. Minimum of five drives
- C. HP Option ROM Configuration for Arrays (ORCA)
- D. A minimum of 2 GB RAID cache memory

Correct Answer: A

Section: (none)

Explanation

Explanation/Reference:

QUESTION 38

A company is planning their backup strategy. They intend to implement a grandfather-father-son tape rotation scheme. What is the minimum requirement for tape storage capacity per week?

- A. Half the size of the data to be backed up
- B. The same size as the data to be backed up
- C. Two times the server storage capacity
- D. Three times the server storage capacity

Correct Answer: A

Section: (none)

Explanation

Explanation/Reference:

QUESTION 39

Which drive bus technology uses full duplexing with link aggregation?

- A. ATA
- B. SCSI
- C. SATA
- D. SAS

Correct Answer: D

Section: (none)

Explanation

Explanation/Reference:

QUESTION 40

Which HP resource can be used to verify storage and operating system rules and interoperability between third-party systems for your design?

- A. A SANdesign Concepts
- B. Systems-interoperability Martix
- C. SANdesign Preference
- D. Compatibility Matrix

Correct Answer: D

Section: (none)

Explanation

Explanation/Reference:

QUESTION 41

Your customer has an existing Fibre Channel SAN but wants to reduce the number of cables and connect their new UP BladeSystem c7000 chassis to the SAN. The customer wants to use the onboard LAN on motherboards (LOMs) of their G7 Wade servers to connect to their fibre channel network. Which c-Class interconnect solution would serve this purpose?

- A. Virtual Connect FlexFabric modules
- B. Virtual Connect Flex 10 modules
- C. Virtual Connect Fibre Channel modules
- D. HP ProCurve 10GbE modules

Correct Answer: A

Section: (none)

Explanation

Explanation/Reference:

QUESTION 42

Your customer wants a multi-site P4000 configuration across campuses. Site protection has to be implemented where retention of full site data is possible when there is loss of communication between sites. Which HP P4000 functionality supports this requirement?

- A. Advance Snapshot Replication
- B. Remote Copy
- C. Network RAID
- D. Failover Manager

Correct Answer: C

Section: (none)

Explanation

Explanation/Reference:

QUESTION 43

A customer is planning attendant backups of multiple branch offices. They do not need off-the storage. But rapid redistributes are essentials. Which backup storage technology should they implement?

- A. backup to disk based storage
- B. backup to local tape drives
- C. backup to SAN-attached tape libraries
- D. backup to network-shared optical jukeboxes

Correct Answer: B

Section: (none)

Explanation

Explanation/Reference:

QUESTION 44

Which task is performed in the first stage of a storage infrastructure assessment?

- A. Power and cooling requirements are evaluated.
- B. Storage performance and management software are installed
- C. Inventory of system, software and employee skills is taken.
- D. Recommendation for designing a storage infrastructure are formulated.

Correct Answer: A

Section: (none)

Explanation

Explanation/Reference:

QUESTION 45

What should run on servers that share access to the same P2000 G3 MSA storage LUN to preserve data integrity?

- A. virtualization software
- B. LUN provisioning tools
- C. MPIO DSM
- D. cluster software

Correct Answer: C

Section: (none)

Explanation

Explanation/Reference:

QUESTION 46

A company has a SAN with storage array has configured the LUN with RAID. The company needs local physical copies of the LUNS. Which technology should the company use?

- A. Replication

- B. clustering
- C. snapshots
- D. clones

Correct Answer: D

Section: (none)

Explanation

Explanation/Reference:

QUESTION 47

A business is growing from a small, tightly control SAN environment to a much larger configuration that is dynamic and may require connections to be moved from one port location to another. Which zoning configuration would best meet the needs of this business?

- A. no fabric zoning
- B. domain ID and port numbers
- C. WWN zoning
- D. VSAN partitioning

Correct Answer: C

Section: (none)

Explanation

Explanation/Reference:

QUESTION 48

A company uses a tape-based backup system to perform nightly backups of shared data. The company would like to minimize the backup window and minimize the amount of tapes needed to restore data.

- A. user-defined backups
- B. differential backups
- C. incremental backups
- D. full backups

Correct Answer: C

Section: (none)

Explanation

Explanation/Reference:

QUESTION 49

What is one similarity regarding how CIFS shares and NFS shares can be used?

- A. A file within either a CIFS or an NFS share can only be opened by one user at a time
- B. A file within CIFS and NFS shares can be opened by multiple users at a time
- C. Different users can access individual CIFS and NAS shares simultaneously
- D. Only one user at a time can be allocated access to any single CIFS or NAS share

Correct Answer: B

Section: (none)

Explanation

Explanation/Reference:

QUESTION 50

Which feature of the SAS-2 protocol enables deployment flexibility, security, and data traffic management?

- A. zoning
- B. fanout expanders
- C. edge expanders
- D. SAS Protocol Layer (SPL)

Correct Answer: D

Section: (none)

Explanation

Explanation/Reference:

QUESTION 51

A customer wants to upgrade to a backup solution that provides fast restores with longer data retention times and easy integration. Which backup solution meets their requirements?

- A. a remote replication solution
- B. an application based disk backup solution
- C. a NAS appliance

D. a virtual library system

Correct Answer: D

Section: (none)

Explanation

Explanation/Reference:

QUESTION 52

A system administrator at an enterprise company wants to extend the storage array of a server by using existing older disk drives. Because of the smaller size of the older drives, the administrator needs at least 18 physical disks. The company needs to ensure that if two drives fail simultaneously, no data loss occurs. Which RAID level should the system administrator use to configure the drives?

A. RAID 1+0

B. RAID 3

C. RAID 5

D. RAID 6

Correct Answer: D

Section: (none)

Explanation

Explanation/Reference:

QUESTION 53

A company is planning to implement a disaster recovery site to protect only data identified as important. Which type of disaster recovery site should the company implement?

A. hot site

B. hybrid site

C. warm site

D. cold site

Correct Answer: C

Section: (none)

Explanation

Explanation/Reference:

QUESTION 54

Which Fibre Channel port type is a fabric port with arbitrated loop capabilities that connects to another node or switch port?

- A. N_Port
- B. FL_Port
- C. E_Port
- D. NL_Port

Correct Answer: D

Section: (none)

Explanation

Explanation/Reference:

QUESTION 55

Which level of storage virtualization implementation offers the best combination of flexibility, performance, capacity, and ease of management?

- A. SAN switch level
- B. storage device level
- C. network level
- D. server level

Correct Answer: B

Section: (none)

Explanation

Explanation/Reference:

QUESTION 56

Which hardware module connects SC fiber optic cables to device and changes electrical signals to optical signals?

- A. gigabit link module (GLM)
- B. Fabric Extender Transceiver (FET)
- C. gigabit interface converter (GBIC)
- D. small form-factor pluggable (SFP) transceiver

Correct Answer: C

Section: (none)

Explanation

Explanation/Reference:

QUESTION 57

A customer running mission-critical applications in the data center to choose the best enterprise storage technology based on reliability, performance, and cost. Which drive technology meets this requirement?

- A. ATA
- B. IDE
- C. SCSI
- D. SAS

Correct Answer: D

Section: (none)

Explanation

Explanation/Reference:

QUESTION 58

A customer requires a highly available storage solution that is easy to manage. The solution must provide high performance and scalability. Which type of storage technology meets this customer's requirements?

- A. storage arrays with SAS disks based on virtualization and SAN connectivity
- B. storage arrays with SATA disks connected by using iSCSI SANs
- C. SCSI storage arrays connected by using iSCSI SANs
- D. SCSI storage arrays based on virtualization and SAN connectivity

Correct Answer: A

Section: (none)

Explanation

Explanation/Reference:

QUESTION 59

A customer is using an HP StoreOnce solution that is configured to use a virtual tape library. Which other configuration can the customer implement on the StoreOnce solution?

- A. RDX drive support
- B. optical jukebox emulation
- C. Business Copy data mover
- D. NAS backup to disk targets

Correct Answer: D

Section: (none)

Explanation

Explanation/Reference:

QUESTION 60

What is an advantage of Serial ATA technology compared with parallel ATA?

- A. point-to-point connections with hot-plug capability
- B. larger pin count on the connector
- C. SCSI compatible configuration with jumpers
- D. high-voltage differential signaling

Correct Answer: A

Section: (none)

Explanation

Explanation/Reference:

QUESTION 61

A network administrator needs to consolidate cables, adapters, and switches in a mixed Ethernet and Fibre Channel environment. Which protocol enables the administrator to accomplish this task?

- A. Fibre Channel over ATM
- B. FCoE
- C. TCP/IP
- D. FCIP

Correct Answer: B

Section: (none)

Explanation

Explanation/Reference:

QUESTION 62

Which HP federated storage technology allows customers to non-disruptively shift data between storage systems?

- A. Remote Replication
- B. Peer Motion
- C. Online Conversion
- D. Online Copy

Correct Answer: B

Section: (none)

Explanation

Explanation/Reference:

QUESTION 63

Which SCSI bus specification supports a maximum distance of 12 meters?

- A. Single-Ended SCSI
- B. High-Voltage Differential SCSI
- C. Serial-Attached SCSI
- D. Low-Voltage Differential SCSI

Correct Answer: D

Section: (none)

Explanation

Explanation/Reference:

QUESTION 64

A company needs to lower operational, power, and cooling costs while preserving their existing Ethernet and Fibre Channel infrastructure. To achieve this goal, they plan to reduce the number of separate adapters and cables required in their data center. What can they use to achieve this goal?

- A. host channel adapters (HCAs)
- B. InfiniBand target channel adapters (TCAs)

- C. network interface cards (NICs) with offloading
- D. converged network adapters (CNAs)

Correct Answer: D

Section: (none)

Explanation

Explanation/Reference:

QUESTION 65

A company needs to lower operational, power, and cooling costs while preserving their existing Ethernet and Fibre Channel infrastructure. To achieve this goal, they plan to reduce the number of separate adapters and cables required in their data center. What can they use to achieve this goal?

- A. host channel adapters (HCAs)
- B. InfiniBand target channel adapters (TCAs)
- C. network interface cards (NICs) with offloading
- D. converged network adapters (CNAs)

Correct Answer: D

Section: (none)

Explanation

Explanation/Reference:

QUESTION 66

A customer requires a multitenancy high-performance, and massively-scalable storage solution. Which technology should the customer use to meet this requirement?

- A. converged utility storage
- B. scale-out storage software
- C. standardized storage platforms
- D. server-based storage virtualization

Correct Answer: A

Section: (none)

Explanation

Explanation/Reference:

QUESTION 67

A company is implementing a disk-based backup strategy that requires maximum efficiency of the backup storage. Which technology provides this capability?

- A. clustering
- B. deduplication
- C. cloning
- D. replication

Correct Answer: B

Section: (none)

Explanation

Explanation/Reference:

QUESTION 68

A customer is considering purchasing a virtual library system (VLS). Because of budget constraints they want to maximize data compression as a way to minimize costs. Which factors affecting the deduplication ratio for backup are important for the company to consider? Select two

- A. data change rate
- B. data retention policy
- C. number of data streams
- D. amount of allowable ????? time
- E. capacity of the tape cartridges

Correct Answer: AB

Section: (none)

Explanation

Explanation/Reference:

QUESTION 69

A system administrator is updating the firmware on an FCoE converged network (CN) switch. How should the FCoE CN switch be configured to minimize disruption of port connectivity during the update process?

- A. Update the driver for the CNA before beginning the firmware update.

- B. Implement a dual path configuration with redundant FCoE CN switches.
- C. Create logical switches within the physical switch by dividing the switch ports and assigning them to individual logical switches.
- D. Assign a unique virtual port name to each virtual machine that shares the switch port.

Correct Answer: B

Section: (none)

Explanation

Explanation/Reference:

QUESTION 70

A customer needs to implement a strategy that manages and protects the growing amount of data at a remote office. Which type of solution should they implement?

- A. a bridging technology for iSCSI routers and bridges across both networks
- B. block level data deduplication, permitting more backups to be retained on less storage
- C. a network storage pool for file-level or block-level access
- D. a unified storage architecture for consolidating block level data and NAS on a single device

Correct Answer: B

Section: (none)

Explanation

Explanation/Reference:

QUESTION 71

What is an important factor that limits the transmission of digital signal over long distances?

- A. diffraction
- B. coherence
- C. attenuation
- D. wave velocity

Correct Answer: C

Section: (none)

Explanation

Explanation/Reference:

QUESTION 72

Which connection protocol supports dual-ported drives and is optimized for backplane interconnections?

- A. ATA
- B. SATA
- C. IDE
- D. SAS

Correct Answer: D

Section: (none)

Explanation

Explanation/Reference:

QUESTION 73

An enterprise company needs the fastest deduplication technology for both backup and restore. Which technology should the company implement?

- A. hash-based chunking
- B. object-level differencing
- C. application-based cloning
- D. host-based file swapping

Correct Answer: B

Section: (none)

Explanation

Explanation/Reference:

QUESTION 74

A company has deployed a large file share, and expects a large amount of data to change each day. They would like to minimize the backup window for the file share. Which type of nightly backup should the company implement?

- A. differential
- B. synthetic full
- C. full
- D. incremental

Correct Answer: D

Section: (none)

Explanation

Explanation/Reference:

QUESTION 75

A customer is designing a SAN in a clustered environment. Each server in a cluster must be able to connect to different storage systems in the SAN simultaneously. The customer plans to add a tape backup system in the future and wants to minimize the impact of potential incorrect zone change. Which zone method should the costumers use?

- A. zoning by application
- B. zoning by port allocation
- C. zoning by HBA
- D. zoning by operating system

Correct Answer: C

Section: (none)

Explanation

Explanation/Reference:

QUESTION 76

HP Converged Storage offers scale-out interfaces that enable storage software to run consistently on industry standard hardware. Which benefit does this approach provide to customers?

- A. flexible, purpose-designed data repositories
- B. unified storage for NAS and SAN in a single architecture
- C. isolation between server, storage, and networking, providing high availability
- D. enhanced data services for file, block, and backup storage

Correct Answer: D

Section: (none)

Explanation

Explanation/Reference:

QUESTION 77

A company is planning to deploy a database application that requires high availability. In the event of a host failure, the application must sustain only minimal service interruption. Which technology should the company use?

- A. remote data replication
- B. local data replication
- C. clustering
- D. two-stage backup

Correct Answer: C

Section: (none)

Explanation

Explanation/Reference:

QUESTION 78

A company is planning to implement a backup and archiving solution. They have the following requirements: • Corrupt data files must be restored within seconds • Archived data must be available for 15 years. • Archived data must be stored off-site. Which types of solutions should the company use? (Select two.)

- A. Remote replication for backup data
- B. Remote replication for archived data
- C. Tape-based storage for backup data
- D. Tape-based storage for archived data
- E. Disk-based storage for backup data
- F. Disk-based storage for archived data

Correct Answer: DE

Section: (none)

Explanation

Explanation/Reference:

QUESTION 79

Which functions are provided by server-based storage virtualization? (Select two.)

- A. Host path failover
- B. Volume sharing among multiple servers

- C. Performance load balancing of SAN connections
- D. Intelligent LUN expansion and reduction
- E. Thin provisioning

Correct Answer: AC

Section: (none)

Explanation

Explanation/Reference:

QUESTION 80

Which device typically has a SCSI ID of 7

- A. Narrow SCSI tape
- B. SCSI host adapter
- C. Bootable Hard Drive
- D. First device

Correct Answer: B

Section: (none)

Explanation

Explanation/Reference:

QUESTION 81

A customer wants to enable a long distance (~50km/31miles) replication for their Fibre Channel-Based enterprise storage solution. Because of budget restrictions, they want a low-cost solution that supports replication. Which type of solution meet these requirements?

- A. Network Storage Router
- B. Extended SAN switch
- C. WAN Accelerator
- D. IP Distance Gateway

Correct Answer: D

Section: (none)

Explanation

Explanation/Reference:

QUESTION 82

Which drive technology uses flash memory and protects against environmental impacts on the drive?

- A. SCSI
- B. SAS
- C. SSD
- D. ATA/IDE

Correct Answer: C

Section: (none)

Explanation

Explanation/Reference:

QUESTION 83

Which function of SNMP enables information to be collected?

- A. Management Information Base (MIB)
- B. SNMP trap
- C. SNMP manager
- D. SNMP agent

Correct Answer: B

Section: (none)

Explanation

Explanation/Reference:

QUESTION 84

A system administrator is integrating a tape library into a SAN environment to facilitate the SAN backup process. The administrator needs to simplify configuration and maintenance procedures and to manage security and reliability across the SAN. What should the administrator do to accomplish these tasks?

- A. Implement a Fibre Channel interface controller.
- B. Configure the SAN for automatic zoning information updates.
- C. Install DAT drives that use DDS technology and automated disaster recovery.

D. Implement an FC-AL topology by modifying an N_Port to be an NL_Port

Correct Answer: A

Section: (none)

Explanation

Explanation/Reference:

QUESTION 85

HP StoreOnce Backup Systems support CIFS and NFS protocols. Which benefits result from this support? (Select two.)

- A. NAS target devices can have separate network configurations for each rack in a two-rack system.
- B. NAS target devices can be created for Windows and UNIX/Linux hosts.
- C. NAS target devices can be used with most backup applications that support backup to disk.
- D. NAS target devices can be integrated into backup routines without a new backup job.
- E. NAS target devices can be used for general purpose file storage.

Correct Answer: BC

Section: (none)

Explanation

Explanation/Reference:

QUESTION 86

A company is planning to deploy data tiering in a SAN environment. They need a solution that provides the maximum performance for the first tier and the maximum capacity for the second tier. Which drive types should the company use? (Select two.)

- A. near line (SATA)
- B. solid-state drive (SSD)
- C. serial-attached SCSI (SAS)
- D. Fibre Channel (FC)
- E. Fibre-attached ATA (FATA)

Correct Answer: AB

Section: (none)

Explanation

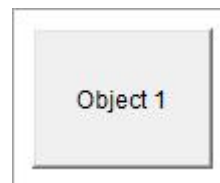
Explanation/Reference:

QUESTION 87

Drop and Connect:



Correct Answer:



Section: (none)
Explanation

Explanation/Reference:

QUESTION 88

Match the Fibre Channel cable type with its characteristic:

has the greatest bandwidth and reduced performance loss

- A. multi-mode optical
- B. single-mode optical
- C. copper
- D.

Correct Answer: B

Section: (none)

Explanation

Explanation/Reference:

QUESTION 89

Match the Fibre Channel cable type with its characteristic:

Is used for medium distances

- A. multi-mode optical
- B. single-mode optical
- C. copper
- D.

Correct Answer: A

Section: (none)

Explanation

Explanation/Reference:

QUESTION 90

Match the Fibre Channel cable type with its characteristic.

reduces or eliminates chromatic and modal dispersion

- A. Single-mode optical
- B. Multi-Mode optical
- C. copper
- D.

Correct Answer: A

Section: (none)

Explanation

Explanation/Reference:

Single-mode optic fiber

Single-mode fiber has the highest bandwidth and lowest loss performance. The core is so small that only a single mode of light can enter it. Therefore, the chromatic and modal dispersion are greatly reduced or eliminated. Single-mode fiber is shown in the following graphic.

QUESTION 91

Match the Fibre Channel cable type with its characteristic.

Is cost-effective and used for shorter distances

- A. Single-mode optical
- B. Multi-Mode optical
- C. copper
- D.

Correct Answer: D

Section: (none)

Explanation

Explanation/Reference:

QUESTION 92

Match each type of storage with its appropriate description.

Monolithic

- A. has multiple controllers that share direct access to a global cache
- B. enables native volume management across peer systems
- C. scales independently to provide a single storage environment
- D. combines NAS and SAN into a single system for consolidation

Correct Answer: A

Section: (none)

Explanation

Explanation/Reference:

QUESTION 93

Match each type of storage with its appropriate description.

Storage Federation

- A. has multiple controllers that share direct access to a global cache
- B. enables native volume management across peer systems
- C. scales independently to provide a single storage environment
- D. combines NAS and SAN into a single system for consolidation

Correct Answer: B

Section: (none)

Explanation

Explanation/Reference:

QUESTION 94

Match each type of storage with its appropriate description.

Converged Storage

- A. has multiple controllers that share direct access to a global cache
- B. enables native volume management across peer systems
- C. scales independently to provide a single storage environment
- D. combines NAS and SAN into a single system for consolidation

Correct Answer: C

Section: (none)

Explanation**Explanation/Reference:****QUESTION 95**

Match each type of storage with its appropriate description.

Unified Storage

- A. has multiple controllers that share direct access to a global cache
- B. enables native volume management across peer systems
- C. scales independently to provide a single storage environment
- D. combines NAS and SAN into a single system for consolidation

Correct Answer: D

Section: (none)

Explanation**Explanation/Reference:****QUESTION 96**

Match the type of data encryption provided by HP Data Protector with its definition.

Encrypts data and meta-data written to media

- A. drive based encryption
- B. software encryption
- C. encrypted control communication
- D.

Correct Answer: A

Section: (none)

Explanation**Explanation/Reference:****QUESTION 97**

Match the type of data encryption provided by HP Data Protector with its definition.

Encrypts data before it is send over a network and written to media

- A. drive based encryption
- B. software encryption
- C. encrypted control communication
- D.

Correct Answer: B

Section: (none)

Explanation

Explanation/Reference:

QUESTION 98

Match each description to the appropriate device.

Uses TCP/IP and Ethernet

- A. san
- B. nas
- C.
- D.

Correct Answer: B

Section: (none)

Explanation

Explanation/Reference:

QUESTION 99

Match each description to the appropriate device.

Has storage capacity of Hundreds of TB

- A. san
- B. nas
- C.
- D.

Correct Answer: A

Section: (none)

Explanation

Explanation/Reference:

QUESTION 100

Match the type of storage virtualization with the benefit it provides.

Storage device-based

- A. offers a balance between speed, capacity and management
- B. extends the size and reach of the storage pool
- C. is an easy to use solution for small businesses
- D.

Correct Answer: A

Section: (none)

Explanation

Explanation/Reference:

QUESTION 101

Match the type of storage virtualization with the benefit it provides.

Network based

- A. offers a balance between speed, capacity and management
- B. extends the size and reach of the storage pool
- C. is an easy to use solution for small businesses
- D.

Correct Answer: B

Section: (none)

Explanation

Explanation/Reference:

QUESTION 102

Match the type of storage virtualization with the benefit it provides.

Server Based

- A. offers a balance between speed, capacity and management
- B. extends the size and reach of the storage pool
- C. is an easy to use solution for small businesses
- D.

Correct Answer: C

Section: (none)

Explanation

Explanation/Reference:

Storage device — On this level, virtualization is implemented at the disk array controller. The controller creates logical storage volumes from the pooled capacity of many different physical disks. Servers interact with these virtual disks as though they were physical disks. Storage device-based virtualization offers businesses a good balance between simple implementation, capacity, speed and functionality, but the main benefit is to simplify the management of the storage device.

Network — Network-based virtualization, usually implemented in a storage area network, can unite disparate array subsystems into a single storage pool, extending the size and reach of the storage pool considerably. In a SAN, the virtualization occurs in either a SAN switch or a virtualization appliance.

Server — In server-based storage virtualization, software running on the server causes the operating system to behave as if it were communicating with a physical storage device, rather than a virtual disk. Server-based storage virtualization offers an effective solution for small and entry-level systems because it is simple to use. However, unlike other forms of storage virtualization, the server-based variety uses server resources which may also be needed to run applications. Server-based storage virtualization may not be available in all OSs.

QUESTION 103

Match the SAN fabric topology with the appropriate description of how interconnected switches are arranged in that fabric.

meshed fabric

- A. in a loop format with a minimum of two paths for each switch
- B. in a tree format with one or more isl's
- C. in a format with all switches connected to each other
- D. in a format that minimizes ports consumed for isl's

Correct Answer: C

Section: (none)

Explanation

Explanation/Reference:

QUESTION 104

Match the SAN fabric topology with the appropriate description of how interconnected switches are arranged in that fabric.

core-edge fabric

- A. in a loop format with a minimum of two paths for each switch
- B. in a tree format with one or more isl's
- C. in a format with all switches connected to each other
- D. in a format that minimizes ports consumed for isl's

Correct Answer: D

Section: (none)

Explanation

Explanation/Reference:

QUESTION 105

Match the SAN fabric topology with the appropriate description of how interconnected switches are arranged in that fabric

cascaded fabric

- A. in a loop format with a minimum of two paths for each switch
- B. in a tree format with one or more isl's
- C. in a format with all switches connected to each other
- D. in a format that minimizes ports consumed for isl's

Correct Answer: B

Section: (none)

Explanation

Explanation/Reference: