

PassGuide.C4040-109\_180,Q&A

Number: C4040-109  
Passing Score: 800  
Time Limit: 120 min  
File Version: 21.05

## VCEplus.com



### *Virtualization Technical Support for AIX and*

- These are the most accurate study questions. Just focus on these and sit in your exam.
- Got this vce from my friend who passed with 98% , each and every stuff in it. I am sharing with you guys.
- I have solved " Stream read error " problem in VCE player .
- All the questions are new one.there is no repetition of any question.
- PassGuide really cares about the students, which create a strong motivating...'
- Passguides made all certification exams very easy.

## Exam A

### QUESTION 1

During the migration of a partition that uses Active Memory Sharing (AMS) the following error is received:

HSCLA304: A suitable shared memory pool for the mobile partitions was not found on the destination managed system...

Which of the following is the most probable cause?

- A. The source is using redundant VIO server paging partitions and the destination has only one paging VIO server partition in the shared memory pool.
- B. The source and destination servers have different Logical Memory Block sizes.
- C. The shared memory pool on the destination is larger than that specified on the source.
- D. The available paging devices on the destination are all marked as redundant capable.

**Correct Answer:** B

**Section:** (none)

**Explanation**

**Explanation/Reference:**

### QUESTION 2

When trying to suspend an LPAR, the process fails during the validation stage. Which of the following must also be correctly configured in order for this process to successfully complete?

- A. Reserved Storage Device Pool
- B. Dual VIO servers
- C. PowerVM Express Edition
- D. N\_Port ID Virtualization

**Correct Answer:** A

**Section:** (none)

**Explanation**

**Explanation/Reference:**

### QUESTION 3

Compared to the backup strategy for a VIO Server, what additional element needs to be backed up in an IVM deployment?

- A. LPAR profile data

- B. LHEA port allocation
- C. Storage pool definitions
- D. PowerVM Edition keys

**Correct Answer:** A

**Section:** (none)

**Explanation**

**Explanation/Reference:**

#### **QUESTION 4**

The administrator of a Power 740 is attempting to define an IVE port as promiscuous for a new VIO server. All LPARs using the IVE port have been shut down, but the administrator still receives a message stating that the VIO server cannot be designated as the promiscuous LPAR. What steps can be performed to enable the IVE port as promiscuous for the VIO server?

- A. Power off the Managed System and reactivate it.
- B. Remove the IVE configuration from the existing LPARs and reactivate them.
- C. Set the promiscuous setting to "none" and save the setting before attempting the operation again.
- D. Change the MCS value from 16 to a lower value.

**Correct Answer:** B

**Section:** (none)

**Explanation**

**Explanation/Reference:**

#### **QUESTION 5**

An administrator is preparing an LPAR for Live Partition Mobility (LPM) and needs to move its storage to external storage. After creating the virtual Fibre Channel adapter on the LPAR, the zoning between the LPAR and the storage is established. What needs to be considered when zoning the storage?

- A. Both WWPNs need to be zoned for the same LUNs for LPM to function properly.
- B. The second WWPN should be zoned to a redundant switch for resilience.
- C. The two WWPNs can be used to zone different LUNs to the same server.
- D. The second WWPN must be zoned if multiple paths are being defined.

**Correct Answer:** A

**Section:** (none)

**Explanation**

**Explanation/Reference:**

**QUESTION 6**

When planning a new Power 770 system, how can an administrator ensure that a database LPAR is prevented from sharing processors with any Multiple Shared-Processor Pools, regardless of whether the LPAR is active?

- A. Unselect the processor sharing options in the LPAR profile.
- B. Define the LPAR with a unique shared processor pool.
- C. Set the processor compatibility mode to POWER6.
- D. Set the processor sharing mode for all LPARs to capped.

**Correct Answer:** A

**Section:** (none)

**Explanation**

**Explanation/Reference:**

answer is corrected.

**QUESTION 7**

An AIX LPAR has a disk drive known as hdisk17. The administrator would like to change the name of the disk to redolog0. Which command will achieve this?

- A. `rendev -l hdisk17 -n redolog0`
- B. `mv /dev/hdisk17 /dev/redolog0`
- C. `chdsk -dev hdisk17 -id redolog0`
- D. `chdev -l hdisk17 -a name=redolog0`

**Correct Answer:** A

**Section:** (none)

**Explanation**

**Explanation/Reference:**

**QUESTION 8**

What is a major benefit for using LHEA instead of an SEA?

- A. 802.11Q support
- B. 64 MAC addresses

- C. Reduced networking configuration
- D. Logical port throttling

**Correct Answer: C**

**Section: (none)**

**Explanation**

**Explanation/Reference:**

#### **QUESTION 9**

What is the maximum number of clients which can be configured to use a single port on a Host Ethernet Adapter?

- A. 2
- B. 4
- C. 8
- D. 16

**Correct Answer: D**

**Section: (none)**

**Explanation**

**Explanation/Reference:**

#### **QUESTION 10**

An administrator is designing a new system. Redundancy is critical, and cost must be kept as low as possible.

The system planned is a Power 770 with 2 enclosures, each with a 10Gb IVE. It will support 6 dedicated production LPARs, 8 development LPARs, and 2 VIO Servers. Production and development networks must be separate from each other.

Which of the following network solutions supports the requirements above?

- A. Utilize the Integrated Virtual Ethernet adapter in each enclosureAllocate 1 logical port from each IVE in each enclosure to each LPAR and VIO ServerConfigure 802.1Q on each LPAR
- B. Allocate Integrated Virtual Ethernet adapters ports to the VIO ServersConfigure a Shared Ethernet Adapter for production and another for developmentAllocate virtual network devices to LPARs
- C. Use dedicated Ethernet cards in each Production LPAR using Ether channelAllocate two dedicated Ethernet cards to the VIO ServersCreate a SEA and use for development LPARs
- D. Run dedicated adapters in the VIO ServersConfigure a Shared Ethernet Adapter for production and another for developmentAllocate virtual network devices to LPARs.

**Correct Answer:** A

**Section:** (none)

**Explanation**

**Explanation/Reference:**

## QUESTION 11

A company needs to implement a virtual environment on a Power 770 server using a Virtual I/O Server and a large number of clients. What network solution can be implemented on the Virtual I/O Server to maximize bandwidth for the clients?

- A. Link Aggregation
- B. Network Interface Backup
- C. Shared Ethernet Adapter failover
- D. VLAN mapping

**Correct Answer:** A

**Section:** (none)

**Explanation**

**Explanation/Reference:**

## QUESTION 12

An administrator must create several production and development LPARs on a new Power 770 server. Processor requirements for the development LPARs change frequently.

Which configuration will isolate the production LPARs from changes in processing requirements for the development LPARs?

- A. Assign the production partitions to a Shared Processor Pool 2 with the Maximum Pool Capacity equal to the Entitled Pool Capacity. Assign the development partitions to the default Shared Processor Pool 1.
- B. Assign the development partitions to Shared Processor Pool 1 with the Maximum Pool Capacity equal to the Entitled Pool Capacity. Assign the production partitions to the default Shared Processor Pool 0.
- C. Assign the production partitions to Shared Processor Pool 1 with the Maximum Pool Capacity equal to the Entitled Pool Capacity. Assign the development partitions to Shared Processor Pool 2 with the Maximum Pool Capacity equal to the Entitled Pool Capacity.
- D. Assign the production partitions to Shared Processor Pool 1 with the Maximum Pool Capacity higher than the Entitled Pool Capacity. Assign the development partitions to Shared Processor Pool 2 with the Maximum Pool Capacity higher than the Entitled Pool Capacity.

**Correct Answer:** C

**Section:** (none)

## Explanation

### Explanation/Reference:

#### QUESTION 13

A customer is planning to migrate an existing AIX 7 environment from POWER5 hardware to POWER7. The existing deployment consists of multiple machines, each hosting many LPARs. Due to software licensing constraints, the new environment must maintain the same number of logical CPUs. The pmcycles command reports the following on an LPAR on the POWER5 environment:

```
$ pmcycles -m  
CPU 0 runs at 2198 MHz  
CPU 1 runs at 2198 MHz  
CPU 2 runs at 2198 MHz  
CPU 3 runs at 2198 MHz  
CPU 4 runs at 2198 MHz  
CPU 5 runs at 2198 MHz  
CPU 6 runs at 2198 MHz  
CPU 7 runs at 2198 MHz
```

How many virtual CPUs should be assigned to the destination LPAR on the POWER7 environment?

- A. 1
- B. 2
- C. 4
- D. 8

**Correct Answer:** B

**Section:** (none)

## Explanation

### Explanation/Reference:

answer is valid.

#### QUESTION 14

An administrator needs to add additional LPARs to a Power 770 server, but all of the available memory on the system is currently assigned to existing LPARs and is continually utilized. What solution can the administrator implement on the system to add the LPARs?

- A. Active Memory Expansion
- B. Active Memory Compression
- C. Virtual Memory Management

D. Weighted Memory Allocation

**Correct Answer:** A

**Section:** (none)

**Explanation**

**Explanation/Reference:**

#### **QUESTION 15**

When many LPARs require large quantities of SAN LUNs, what is a benefit of leveraging NPIV over more traditional vSCSI virtualization?

- A. Multipath I/O
- B. Enhanced resilience
- C. Normalized throughput
- D. Reduced administration

**Correct Answer:** D

**Section:** (none)

**Explanation**

**Explanation/Reference:**

#### **QUESTION 16**

An architect is designing a new POWER7 implementation consisting of a VIO Server (VIOS) and 6 AIX partitions.

AIX partitions need to occasionally access a tape drive for restoration and backup of application data and tape access will not be required by more than one partition at any time. The performance of the solution is not critical and the architect wants to keep the cost to a minimum.

Which of the following configurations will address the architect's requirements?

- A. Allocate a SCSI tape drive to the VIOS partition. Virtualize connections from the tape drive to the AIX clients using vSCSI.
- B. Allocate a FC tape drive to the VIOS partition. Virtualize connections from the tape drive to the AIX clients using NPIV.
- C. Allocate a USB tape drive to the VIOS partition. Virtualize connections from the tape drive to the AIX clients using NPIV.
- D. Allocate a SAS tape drive to the VIOS partition. Virtualize connections from the tape drive to the AIX clients using vSCSI.

**Correct Answer:** D

**Section:** (none)

**Explanation**



**Explanation/Reference:**

**QUESTION 17**

An architect has been given the task of incorporating some new Power Systems servers running AIX 7 into an existing data center which is supported by a legacy SAN.

The new servers will need to be connected to the SAN, and the LPARs on the servers will each have access to a Fibre Channel Tape using virtualized devices.

Which action will the architect need to take?

- A. Check that the SAN switches support NPIV.
- B. Use the legacy Fibre Channel device driver in AIX.
- C. Specify that AIX Enterprise Edition must be used.
- D. Put the tape drive into the same zone as the HBA in the VIOS.

**Correct Answer:** A

**Section:** (none)

**Explanation**

**Explanation/Reference:**

**QUESTION 18**

A client is planning to purchase a Power 770 with 2 enclosures, and needs to have redundancy for multiple LPARs. Which of these solutions provides the most redundancy for the LPARs at least cost?

- A. Assign an IVE logical port from each enclosure to each LPAR. Assign an HBA from each enclosure to each LPAR.
- B. Create two VIO servers assigning IVE and HBA adapters from different enclosures. Assign a virtual Ethernet adapter from each VIO server to Setup NIB on the LPARs. Assign SAN mapped virtual SCSI disks from each VIO server and use MPIO on the LPARS.
- C. Create two VIO servers assigning IVE and HBA adapters from different enclosures. Configure SEA failover on the VIO servers and assign a virtual Ethernet adapter to the LPARs. Assign SAN mapped virtual SCSI disks from each VIO server and use MPIO on the LPARS.
- D. Create a VIO server with two IVE adapters from different enclosures. Configure EtherChannel on the VIO server and assign a virtual Ethernet adapter to the LPARs. Assign an HBA from each enclosure to each LPAR.

**Correct Answer:** C

**Section:** (none)

**Explanation**

**Explanation/Reference:**

**QUESTION 19**

A new VIO Server environment has been created to support several VIO Clients. Disks have been assigned to both VIO Servers. Which of the following will ensure that disks can be mapped from both VIO Servers?

- A. chdev -dev sys0 -attr respol=disabled
- B. chdev -dev hdiskX -attr reserve\_policy=no\_reserve
- C. chdev -dev hdiskX -attr reservation=no
- D. chdev -dev sys0 -attr map=yes

**Correct Answer:** B

**Section:** (none)

**Explanation**

**Explanation/Reference:**

**QUESTION 20**

A VIO server has been installed using local storage. Which padmin command will make rootvg redundant?

- A. mirrorvg
- B. mirrorios
- C. mirrorpa
- D. mirroros

**Correct Answer:** B

**Section:** (none)

**Explanation**

**Explanation/Reference:**

**QUESTION 21**

A client is designing a system to support three 24x7 applications, each in a different environment. The plan is to host these applications on a new POWER7 based server to add to their existing POWER6 servers. Virtual I/O Server will not be used.

The applications have the following OS and processor requirements:

- AIX 6.1 with a peak of 2 cores between 10am-2pm
- AIX 5.3 with a peak of 2 cores between 5pm-10pm
- AIX 5.2 with a peak of 2 cores between 3am-7am

Outside the peak periods, the processor utilization is extremely low.

Which of the following configurations supports the design requirements?

- A. Each applications each needs its own LPAR running native AIX.The LPAR must be running the appropriate version of AIX.The LPARs can all use the shared pool and be uncapped.
- B. The AIX 5.2 can be hosted in a WPAR in an AIX 7.1 LPAR.The AIX 5.3 and AIX 6.1 can each have their own LPAR.All LPARs can use the shared processor pool.
- C. A minimum of four processor activations is required.Two dedicated processors for an AIX 5.2 LPAR.AIX 5.3 and AIX 6.1 can share 2 processors
- D. The LPAR profiles can set the processor mode to POWER6The AIX 6.1 and AIX 5.3 LPARs can be migrated using Live Partition Mobility.The AIX 5.2 could only be migrated if it is in a WPAR.

**Correct Answer:** B

**Section:** (none)

**Explanation**

**Explanation/Reference:**

## QUESTION 22

A company has a VIO server supporting several infrastructure LPARs, including a NIM server, several NFS servers, and a document management server. Network connectivity is provided from the VIO server through the 1Gb IVE.

The NIM clients frequently receive "NFS Server not responding" errors during installations due to the volume of traffic to the server.

When planning an upgrade to POWER7 hardware, which action will minimize these errors?

- A. Share the IVE directly to the LPARs.
- B. Implement Jumbo Frames on the 1Gb IVE adapters.
- C. Implement a 10Gb network infrastructure.
- D. Assign dedicated 1Gb adapters to each LPAR.

**Correct Answer:** C

**Section:** (none)

**Explanation**

**Explanation/Reference:**

answer is updated.

## QUESTION 23

To prevent frames being dropped as a result of network congestion on high speed links, IBM recommends enabling the use of pause frame on compatible switches and IVE adapters. Which attribute enables pause frames?

- A. Flow Control
- B. Jumbo Frames
- C. Port Group MCS
- D. 802.3ad

**Correct Answer:** A

**Section:** (none)

**Explanation**

**Explanation/Reference:**

#### **QUESTION 24**

An administrator plans to implement Active Memory Expansion on several LPARs on a Power 770 system. Which tool should be used to determine the recommended LPAR settings for Active Memory Expansion?

- A. amepat
- B. amelpar
- C. amemon
- D. amestat

**Correct Answer:** A

**Section:** (none)

**Explanation**

**Explanation/Reference:**

#### **QUESTION 25**

A customer wants to compare a number of models within the POWER7 family to determine which is the best fit for their requirements. What centralized source would allow them to compare availability of Capacity on Demand and supported Hot-plug functions?

- A. POWER7 Press kit
- B. Techline POWER7 compendium
- C. POWER Reference Guide
- D. Facts and Features Report

**Correct Answer:** D

**Section:** (none)

**Explanation**

**Explanation/Reference:**

**QUESTION 26**

Where can an administrator find the implementation process for configuring a Power 795 to run in TurboCore mode?

- A. IBM Systems Director
- B. IBM InfoCenter
- C. Performance Toolbox for AIX
- D. IBM System Planning Tool

**Correct Answer:** B

**Section:** (none)

**Explanation**

**Explanation/Reference:**

**QUESTION 27**

An architect is planning to use an existing NIM server to back up and restore VIO server partitions. In addition to the backup of the VIO Server (VIOS), what is needed to successfully complete a restore operation?

- A. A backup of the profile data from the VIOS partition.
- B. A valid LPP Source on the NIM partition and an extracted SPOT from the VIOS backup.
- C. A copy of the volume group structures and a list of device mappings from the VIOS partition.
- D. A copy of the VIOS bosinst. data from the VIOS partition.

**Correct Answer:** C

**Section:** (none)

**Explanation**

**Explanation/Reference:**

**QUESTION 28**

A secondary site is being deployed for application availability and site failover. Servers of identical model and type have been ordered and delivered to the new location. Additional PowerVM activation keys were obtained for the original location to allow more than 32000 WWNs and enable Active

Memory Sharing (AMS).

How can the duplicate systems be updated to enable these additional features?

- A. Create a system plan of the existing configuration and deploy this to the duplicate configuration.
- B. The activation keys must be exported using the PowerVM option within the Capacity On Demand (CoD) panel on the HMC.
- C. Activation keys are generated for a specific system and must be generated for each new server in the failover site.
- D. Contact IBM Support to generate the one-time password required to administer the PowerVM activation keys.

**Correct Answer: C**

**Section: (none)**

**Explanation**

**Explanation/Reference:**

#### **QUESTION 29**

A number of POWER7 servers have been ordered to replace an existing infrastructure of POWER4 machines. All existing LPARs will be manually recreated on the new machines, preserving the installed operating systems.

An administrator is planning to attach the POWER7 machines to the subnet, allowing the LPARs to keep their hostname and IP addresses. The NIM server that will be used to restore the LPARs on the new machines allows its clients to initiate NIM client commands. What needs to be considered to preserve the ability to restore an existing LPAR on the new infrastructure?

- A. LPAR profiles need to be consistent between old and new infrastructure.
- B. The POWER7 machines will be managed by a different HMC.
- C. NIM client CPU ID validation should be disabled before installation on the new hardware.
- D. Prior to migrating to POWER7, the AIX levels of the existing LPARs may need to be updated.

**Correct Answer: C**

**Section: (none)**

**Explanation**

**Explanation/Reference:**

#### **QUESTION 30**

An administrator is creating Virtual IO servers (VIOs) on a new POWER7 server, anticipating that Live Partition Mobility (LPM) will be used in the environment. Which action must be taken before LPM operations can begin?

- A. Ensure that AIX Enterprise Edition is loaded on the VIO server partition.
- B. Check the Mover Service Partition box on the partition properties panel on the HMC.

- C. Create the same number of VIOS partitions on all servers.
- D. Configure SEA failover for all VIOS partitions

**Correct Answer:** B

**Section:** (none)

**Explanation**

**Explanation/Reference:**

### **QUESTION 31**

A system with two WPARs is reaching the memory limits imposed on them. Both have been set to a hard limit of 50%.

WPAR1 has a peak from 8am-10am of 70% memory resources WPAR2 has a peak from 2pm-6pm of 65% memory resources

At peak times the system may kill processes which request more memory, as paging space is exhausted.

What action would allow the two partitions to run efficiently at the same time?

- A. Configure WPAR memory limits using shares, and then set a hard memory limit of 85%.
- B. Use DLPAR to add additional memory to the global environment.
- C. Configure the WPARs to run in passive mode.
- D. Increase paging space by 20% for WPAR1 and 15% for WPAR2.

**Correct Answer:** A

**Section:** (none)

**Explanation**

**Explanation/Reference:**

### **QUESTION 32**

A customer is consolidating two POWER6 595 servers to a single Power 795. The two 595 servers each have 24 active processors and have the following LPARs using dedicated processors, running continuously:

SERVER1		SERVER2	
LPAR1	19 Processors	LPAR4	12 Processors
LPAR2	3 Processors	LPAR5	5 Processors
LPAR3	2 Processors	LPAR6	7 Processors

The new Power 795 system will have two Processor Books (nodes), each with 8 cores activated in all MCMs (Multi Chip Modules).

LPAR1 is in need of more processing power. If all the other LPARs keep their existing Processor allocation, what is the maximum number of processors which can be allocated to LPAR1?

- A. 27
- B. 32
- C. 36
- D. 100

**Correct Answer:** B

**Section:** (none)

**Explanation**

**Explanation/Reference:**

answer is corrected.

### QUESTION 33

A customer is planning to purchase a fully populated Power 795. There are 65 applications which need to run and all need an AIX 7 environment. The architect is considering whether to use an LPAR for each application or to use a single large LPAR and have a WPAR for each application.

What must be considered before creating the environment?

- A. There is a limit of 64 WPARs in any AIX V7 global environment.
- B. An activation key for LPARs with more than 128 processors is required.
- C. There is a limit of 32 Processors in a WPAR.
- D. Multiple IVE adapters are required to support all the partitions.

**Correct Answer:** B

**Section:** (none)

**Explanation**



**Explanation/Reference:**

**QUESTION 34**

Based on the SuSE Linux /proc/ppc64/lparcfg contents on a Linux LPAR, how many processing units are assigned to this system?

```
SuSE11_client:/ # cat /proc/ppc64/lparcfg
lparcfg 1.8
serial_number=IBM,02067N14P
system_type=IBM,8202-E4B
partition_id=3
BoundThrds=1
CapInc=1
DisWheRotPer=5120000
MinEntCap=10
MinEntCapPerVP=10
MinMem=8192
MinProcs=1
partition_max_entitled_capacity=400
system_potential_processors=8
DesEntCap=200
DesMem=18432
DesProcs=4
DesVarCapWt=0
DedDonMode=0
partition_entitled_capacity=200
group=32771
system_active_processors=8
```

- A. 1
- B. 2
- C. 4
- D. 8

**Correct Answer: B**

**Section: (none)**

**Explanation**

**Explanation/Reference:**

**QUESTION 35**

A new NPIV VIO client is being built. How can the administrator log all virtual Fibre Channel adapters into the SAN so the WWPNs are visible for disk

mapping?

- A. Boot the LPAR to SMS and run the configure boot device.
- B. Boot the LPAR normally, use the lsmmap -all -npiv command on the VIO server to check it has logged in.
- C. Boot the LPAR into the Open Firmware prompt and run ioinfo command.
- D. Boot the LPAR from a NIM server and access a maintenance shell.

**Correct Answer:** D

**Section:** (none)

**Explanation**

**Explanation/Reference:**

#### **QUESTION 36**

An administrator has configured NTP on the HMC using the hostname of a public NTP server and restarts the HMC. When the /var/log/ntp file is checked, the synchronization with the time server has not occurred. What is the most likely cause?

- A. The firewall needs to be opened for xntp.
- B. The "chhmc -c xntp -s start" command needs to be run.
- C. The time server needs to be specified by IP address on an HMC.
- D. NTP has been configured on the private network.

**Correct Answer:** A

**Section:** (none)

**Explanation**

**Explanation/Reference:**

#### **QUESTION 37**

Which of the following are valid outbound communication methods for Call Home using an HMC?

- A. SMTP Gateway connectionVPN connectionLocal Modem
- B. SSL Internet connectionVPN connectionSNMP Gateway connection
- C. Local ModemVPN connectionSSL Internet connection
- D. SMTP Gateway connectionLocal ModemSSL Internet connection

**Correct Answer:** C

**Section:** (none)

**Explanation****Explanation/Reference:****QUESTION 38**

An administrator has installed a new HMC and needs remote command line access. The option for "Remote Command Execution" has been selected, but ssh still isn't working.

What action must be performed to allow ssh connections?

- A. Ensure the option for "Remote Operation" is selected.
- B. Under "Manage Certificates", create a New Certificate.
- C. Use the ssh-keygen utility to generate a new key and add that key to the remote host.
- D. Add "Secure Shell" to the list of Incoming Protocols in the Firewall Settings.

**Correct Answer: D**

**Section: (none)**

**Explanation****Explanation/Reference:****QUESTION 39**

A new system is being implemented with NPIV storage. The administrator checks disk availability and notices that there are more disks than expected, and that some are already in use.

What is the cause of this?

- A. SAN single initiator zoning was configured.
- B. NPIV zoning is disabled.
- C. SAN multi-initiator zoning was configured.
- D. NPIV zone mapping has duplicate WWPNs.

**Correct Answer: C**

**Section: (none)**

**Explanation****Explanation/Reference:****QUESTION 40**

An administrator would like to determine the virtualization capabilities of some attached storage before proposing a new virtualization strategy. To determine the capabilities of the attached storage, the administrator runs `chkdev` and receives the following result:

```
padmin:vio1:/home/padmin>chkdev -dev hdisk1
NAME: hdisk1
IDENTIFIER: 38213600507680171007248000000000791F04214503IBMfcp PHYS2VIRT_CAPABLE: NA
VIRT2NPIV_CAPABLE: YES
VIRT2PHYS_CAPABLE: YES
```

Based on the output above, which one of the statements is true?

- A. The disk can be presented by NPIV only.
- B. The disk can be converted to NPIV with data loss.
- C. The disk can only be presented as a physical disk.
- D. The disk is presented by vSCSI and is NPIV capable.

**Correct Answer:** D

**Section:** (none)

**Explanation**

**Explanation/Reference:**

## QUESTION 41

An administrator has created a virtual media repository to hold images for a file backed virtual optical device. The administrator would now like to load an ISO image, `aix7.iso` into the repository.

Which of the following commands will achieve this?

- A. `loadsp -sp aix7 -fb aix7.iso`
- B. `loadopt -vtd aix7 -disk aix7.iso`
- C. `mkrep -vopt aix7 -file aix7.iso -fb`
- D. `mkvopt -name aix7 -file aix7.iso -ro`

**Correct Answer:** D

**Section:** (none)

**Explanation**

**Explanation/Reference:**

**QUESTION 42**

An administrator is using a Power Systems server with a Virtual IO server to host a large number of short-lived development LPARs. All disks are presented using virtual Fibre Channel adapters with NPIV enabled. When trying to create a new LPAR, the following error message is displayed:

HSCLA4C5: There are no WWPNs remaining for this managed system that can be assigned to a virtual Fibre Channel adapter.

Which action will resolve the error?

- A. Upgrade the server to PowerVM Enterprise Edition.
- B. Change the WWPN prefix configured in the Virtual I/O Server.
- C. Reuse the WWPNs of decommissioned LPARs.
- D. Use Capacity On Demand to generate an activation code that provides more WWPNs.

**Correct Answer:** D

**Section:** (none)

**Explanation**

**Explanation/Reference:**

**QUESTION 43**

A customer is in the process of configuring a redundant pair of VIO Servers. They need to test that SEA failover has been correctly enabled. Which command can the padmin UserID use (on the active SEA, ent4) to manually force an SEA failover event?

- A. `chdev ent4 -attr ha_mode=True`
- B. `chdev -l ent4 -attr ha_mode=failed`
- C. `chdev -d ent4 -attr ha_mode=Active`
- D. `chdev -dev ent4 -attr ha_mode=standby`

**Correct Answer:** D

**Section:** (none)

**Explanation**

**Explanation/Reference:**

up-to-date.

**QUESTION 44**

An existing machine is configured with redundant VIO Servers with SEA failover. A number of VLANs are already configured and used by the hosted client LPARs. Two additional VLANs are required to be added to the deployment to support new growth. An administrator uses a DLPAR operation to add the additional VLANs to the existing Virtual Ethernet adapters. The attempt failed. They have updated the LPAR profile for both VIO Servers. Next they shutdown one of the VIO Servers and attempt to reactivate the LPAR. The following error is displayed:

"HSC0282 The virtual Ethernet adapter in virtual I/O slot 11 can't be defined because the partition with ID 2 already defines a trunk adapter in its virtual I/O slot 11. Please modify the profile accordingly and reactivate the partition."

What is the cause of the failure?

- A. It is not possible to add new VLANs to an existing virtual adapter that is part of an SEA failover environment.
- B. The failed DLPAR operation has not been cleared prior to reactivation of the LPAR profile.
- C. The connectivity required for DLPAR operations has not been configured.
- D. The additional VLANs have not been added to the active VIO Server.

**Correct Answer:** A

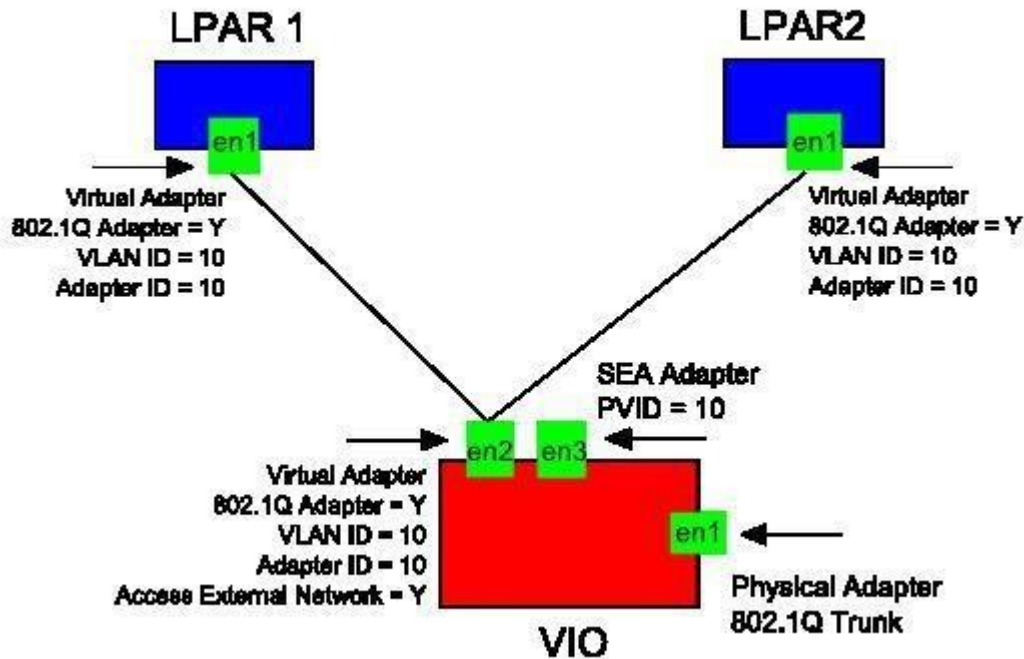
**Section:** (none)

**Explanation**

**Explanation/Reference:**

#### **QUESTION 45**

A system has 2 LPARs and a VIO Server with networking configured as follows:



LPAR1 and LPAR2 are unable to communicate with external systems. What should be done to allow them to access the external network?

- A. LPAR1 and LPAR2 Virtual Network Adapters should be configured with Access External Network
- B. LPAR1 and LPAR2 should configure 802.1Q adapters in their Operating System.
- C. VIO should use another VLAN ID on its Virtual Network Adapter.
- D. 802.1Q should be disabled on the VIO Virtual Network Adapter.

**Correct Answer: C**

**Section: (none)**

**Explanation**

**Explanation/Reference:**

#### QUESTION 46

How can an administrator list all VIO server (VIOS) commands run by any user?

- A. The history -t command run as the padmin user.
- B. The ioslog command run as the root user.
- C. The alog -t ios command run as the root user.
- D. The lsgcl command run as the padmin user.

**Correct Answer:** B

**Section:** (none)

**Explanation**

**Explanation/Reference:**

#### **QUESTION 47**

After installing a new VIO server partition an administrator noticed that the time zone is incorrectly set to CST6DST. The administrator would like the time zone set to Europe/London. Which command will achieve this?

- A. chdate -timezone Europe/London
- B. chzone -zone Europe/London
- C. chtime -tz Europe/London
- D. chsys -timezone Europe/London

**Correct Answer:** A

**Section:** (none)

**Explanation**

**Explanation/Reference:**

#### **QUESTION 48**

A dedicated LPAR has two dedicated Fibre Channel HBAs assigned to it.

In order to reduce the amount of hardware, the LPAR will be migrated to a currently running VIO server.

The administrator collects some server performance from the VIO server and notices that the I/O peaks at 5.5Gbits and runs at an average of 4Gbits per second.

The VIO Server runs two dual port 8Gbit FCS cards, so the load is not affected by other LPARS on the VIO Server.

Which of the following is the most cost-efficient configuration for the VIO client?

- A. Assign vSCSI disk for the new client LPAR through prioritized channels.



- B. Assign one of the ports in the 8Gbit Fibre Channel HBA, using NPIV directly to the new client partition.
- C. Dedicate two new Fibre Channel HBAs to the VIO Server and use them to exclusively host the vSCSI disks for the new client partition.
- D. Install SDDPCM drivers onto the VIO Server, set up the client LPAR and run the following command: "datapath priorities vhostX fscsi0 fscsi1 fscsi2 fscsi3".

**Correct Answer:** B

**Section:** (none)

**Explanation**

**Explanation/Reference:**

## QUESTION 49

When installing a Linux LPAR from an AIX NIM server, what steps are required?

- A. Add LPAR details to /etc/bootptabCopy DVD to a local directory and add directory to /etc/exportsCopy network boot kernel to /etc/tftpbootBoot into SMS and configure remote IPL settings
- B. Configure LPAR as a NIM clientCopy DVD to local directoryConfigure Linux SPOTBoot into SMS and configure remote IPL settings
- C. Add LPAR details to /etc/tftp/other/kernel.confCopy DVD to local directory and add to /etc/exportsCopy network boot kernel to /tftpboot/kernelsBoot into SMS and configure remote IPL settings
- D. Copy DVD to local directory and export via /etc/exportsCopy network boot kernel to /etc/tftpbootDefine LPAR as a NIM client and initiate a bosinstallBoot into SMS and configure remote IPL settings

**Correct Answer:** A

**Section:** (none)

**Explanation**

**Explanation/Reference:**

## QUESTION 50

An application requires 40GB of memory, but only 20GB of memory can be allocated to the partition.

What Active Memory Expansion factor should be set for the Hypervisor to target 40GB of memory?

- A. 2.0
- B. 200
- C. 0.5
- D. 20

**Correct Answer:** A

**Section:** (none)

**Explanation**

**Explanation/Reference:**

#### **QUESTION 51**

An administrator is interested in installing PowerVM Lx86 software on a new Power 770 for a proof of concept. Which of the following statements about PowerVM Lx86 is true?

- A. PowerVM Lx86 can be implemented on VIO server 2.1 FP21 and higher.
- B. PowerVM Lx86 supports only 64 bit applications that run in x86 real mode.
- C. PowerVM Lx86 allows for many x86 Linux applications to run on supported versions of Linux on Power.
- D. PowerVM Lx86 allows for x86 Linux applications to run under AIX 6.1 or 7.1 Enterprise Edition.

**Correct Answer:** C

**Section:** (none)

**Explanation**

**Explanation/Reference:**

#### **QUESTION 52**

After restoring a mksysb image from a NIM server, an administrator noticed that the SEA interface had not been successfully reconfigured.

Which one of the following could explain this?

- A. An invalid bosinst.data file was allocated to the VIO Server partition during the NIM restore.
- B. The logical device structure must be backed up prior to the backupios operation.
- C. The profile data must be backed up prior to the mksysb operation.
- D. The VIO Server partition was configured to remain a NIM client after the install.

**Correct Answer:** D

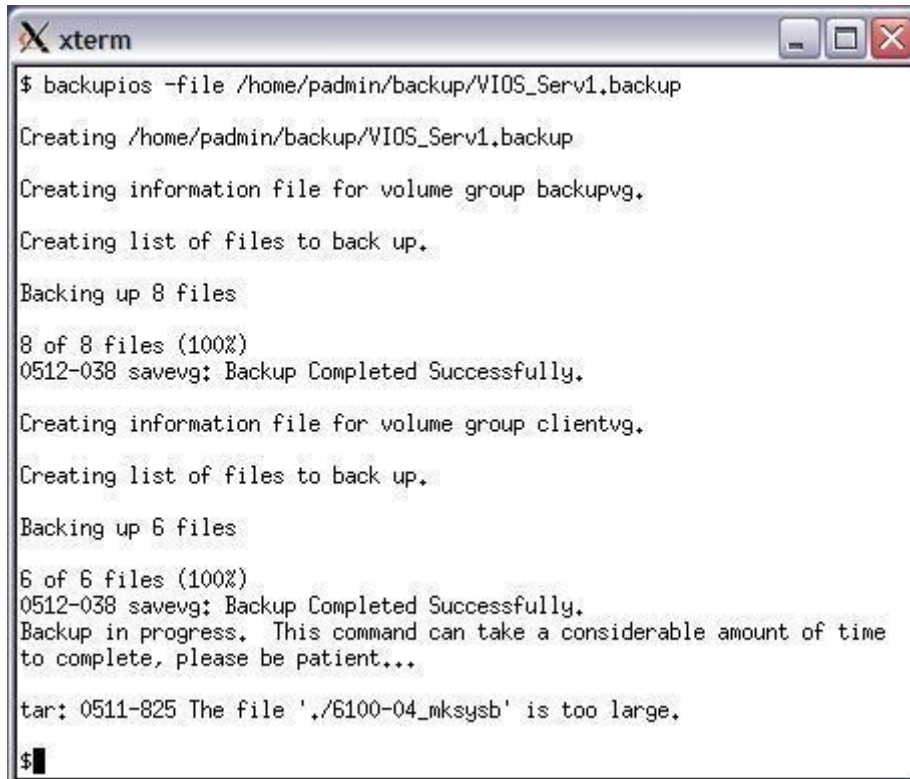
**Section:** (none)

**Explanation**

**Explanation/Reference:**

#### **QUESTION 53**

An administrator receives the following error while performing a backup of a VIO Server.



```
$ backupios -file /home/padmin/backup/VIOS_Serv1.backup
Creating /home/padmin/backup/VIOS_Serv1.backup
Creating information file for volume group backupvg.
Creating list of files to back up.
Backing up 8 files
8 of 8 files (100%)
0512-038 savevg: Backup Completed Successfully.
Creating information file for volume group clientvg.
Creating list of files to back up.
Backing up 6 files
6 of 6 files (100%)
0512-038 savevg: Backup Completed Successfully.
Backup in progress. This command can take a considerable amount of time
to complete, please be patient...
tar: 0511-825 The file './6100-04_mksysb' is too large.
$
```

What can the administrator do to backup the VIO Server successfully?

- A. Edit the /etc/security/limits file and change the fsize field to -1.
- B. Increase the size of the /home/padmin/backup filesystem.
- C. Change the ownership of the /home/padmin/backup directory to padmin.
- D. Run the backupios command again using the -mksysb flag

**Correct Answer: D**

**Section: (none)**

**Explanation**

**Explanation/Reference:**

**QUESTION 54**

An administrator has removed a client LPAR and would like to unmap the virtual Fibre Channel adapter vfchost0 from the physical backing adapter fcs2. Which of the following commands will achieve this?

- A. `rmvdev -vtd vfchost0`
- B. `vfccumap -vdev vfchost0 -dev fcs2`
- C. `rmdev -dev fcs2`
- D. `vfccmap -vadapter vfchost0 -fcp`

**Correct Answer:** D

**Section:** (none)

**Explanation**

**Explanation/Reference:**

**QUESTION 55**

An administrator adds a new virtual target device to a vhost adapter that already had target devices on it. The client LPAR does not detect the new disk and the following error has been logged in the errlog:

LABEL: VSCSI\_HOST

IDENTIFIER: DF63A4FE

Date/Time: Tue Mar 8 10:41:55 2011

Sequence Number 2205

Machine Id: 00C7654DB00

Node Id: vios1p1

Class: S

Type: TEMP

Resource Name: vhost3

Description

Virtual SCSI Host Adapter detected an error

Probable Causes

Virtual SCSI Host Adapter Driver is an Undefined State

Failure Causes

Virtual SCSI Host Adapter Driver is an Undefined State Recommended Actions

Remove Virtual SCSI Host Adapter Instance, then Configure the same instance

What is the most likely cause for this situation?

- A. The intr\_lsi of the host adapter is set higher than that needed by the new drive
- B. The intr\_priority of the host adapter is set lower than that needed by the new drive.
- C. The queue\_depth parameter of the new drive is larger than those of the other drives provided by the host adapter
- D. The max\_transfer parameter of the new drive is smaller than the rate already reported by the host adapter

**Correct Answer: D**

**Section: (none)**

**Explanation**

**Explanation/Reference:**

## QUESTION 56

A new virtual SCSI adapter has been added to a SuSE Linux client using DLPAR. By what method will the adapter be added to the system?

- A. The IBM.DRM service dynamically adds the adapter.
- B. The administrator runs the echo "- -" > /sys/class/scsi\_host/host0/scan command.
- C. The adapter will be recognized after rebooting.
- D. The administrator runs the refresh -s IBM.ServiceRM command.

**Correct Answer:** A

**Section:** (none)

**Explanation**

**Explanation/Reference:**

## QUESTION 57

An administrator is attempting to remove a virtual adapter from an AIX partition using an HMC running V7R7.2. The DLPAR operation is failing with the following message:

"Virtual adapters that are marked as required cannot be dynamically removed from the partition. Please change your adapter selections and try the operation again."

How can the administrator remove the virtual adapter while minimizing any downtime?

- A. Remove the virtual adapter from the partition profile and reactivate the partition.
- B. Modify the active properties for the partition so that the adapter is not required for partition activation and repeat the DLPAR operation.
- C. Modify the last activated partition profile so that the adapter is not required for partition activation and repeat the DLPAR operation.
- D. Select the 'Force' option when performing the DLPAR operation.

**Correct Answer:** C

**Section:** (none)

**Explanation**

**Explanation/Reference:**

## QUESTION 58

An administrator wants to add vSCSI adapters to a new client using the existing mapping schema. The slots will be 40/41 on the VIO Server. Given the current properties of the VIO server, what must be done to accomplish this?

**Partition Properties - prodserv-VIOS**

General Hardware **Virtual Adapters** Settings Other

Actions ▼

Virtual resources allow for the sharing of physical hardware between logical partitions. The current virtual adapter settings are listed below.

Maximum virtual adapters : \* 40

Number of virtual adapters : 8

--- Select Action --- ▼

Select	Type ^	Adapter ID ^	Server/Client Partition ^	Partner Adapter ^	Required ^
<input type="checkbox"/>	Ethernet	2	N/A	N/A	Yes
<input type="checkbox"/>	Server SCSI	20	SuSE11_client(3)	20	Yes
<input type="checkbox"/>	Server SCSI	21	SuSE11_client(3)	21	No
<input type="checkbox"/>	Server SCSI	3	Any Partition	Any Partition Slot	No
<input type="checkbox"/>	Server SCSI	30	SuSE10_client(4)	30	Yes
<input type="checkbox"/>	Server SCSI	31	SuSE10_client(4)	31	No
<input type="checkbox"/>	Server Serial	0	Any Partition	Any Partition Slot	Yes
<input type="checkbox"/>	Server Serial	1	Any Partition	Any Partition Slot	Yes

Total: 8 Filtered: 8 Selected: 0

OK Cancel Help

- Use DLPAR to increase the Maximum virtual adapters to 50. Use DLPAR to create the vSCSI adapters on slots 40/41 and map them to the new client.
- Use DLPAR to increase the Maximum virtual adapters to 50. Use DLPAR to create the vSCSI adapters on slots 40/41 and map them as "Any client partition can connect".
- Change the Maximum virtual adapters to 50 in the VIOS partition profile. Create the vSCSI adapters on slots 40/41 in the VIOS partition profile and map them as "Any client partition can connect". Reboot the VIOS.
- Change the Maximum virtual adapters to 50 in the VIOS partition profile. Create the vSCSI adapters on slots 40/41 in the VIOS partition profile and map them to the new client. Shutdown and reactivate the VIOS.

**Correct Answer: D**

**Section: (none)**

**Explanation**

**Explanation/Reference:**

**QUESTION 59**

An administrator has an application running in a WPAR on a Power 720. The application must be migrated to another server. What is the minimum required hardware level for this to work?

- A. POWER4
- B. POWER5
- C. POWER6
- D. POWER7

**Correct Answer: A**

**Section: (none)**

**Explanation**

**Explanation/Reference:**

**QUESTION 60**

What is required on the Global Environment for Live Application Mobility to function?

- A. WPAR Manager
- B. WPAR Manager Agent
- C. RSCT
- D. SSH Key Manager

**Correct Answer: B**

**Section: (none)**

**Explanation**

**Explanation/Reference:**

**QUESTION 61**

A production application is hosted across two Power 750 Express servers, managed by an HMC. Each machine has 16 cores and 32GB RAM. Four 8GB LPARs are defined across the two systems and only 3 LPARs are active at once. Live Partition Mobility is used to maintain availability when maintenance is required.



A test environment is being built across two Power 550 Express servers. Each machine has 8 cores and 16GB RAM. Four 4GB LPARs will be defined across the two systems, again only 3 will be active at once. To isolate the test and production environment, the test environment is managed by two IVMs.

Two LPARs have been created on each test server. The administrator initiates a Live Partition Mobility operation to test moving LPARs between the servers.

The `migrpar` command fails to migrate the 4th LPAR with the following error:  
"The target managed system does not have enough available memory to create the partition."

Because the 4th LPAR was inactive, it was expected that an inactive migration would be successful.

Why would this inactive migration fail on the test environment, but succeed on the production environment?

- A. IVM-managed systems do not support inactive migrations.
- B. IVM-managed systems reserve RAM allocations, even for inactive LPARs.
- C. The target managed system already has the maximum number of partitions.
- D. Active Memory Sharing (AMS) or Active Memory Expansion (AME) is required for RAM over commitment.

**Correct Answer:** B

**Section:** (none)

**Explanation**

**Explanation/Reference:**

## QUESTION 62

An LPAR was created on a POWER6 system with default processor/memory settings. It was migrated from the POWER6 system to a POWER7 system. Over time, that LPAR has been shutdown and restarted.

An administrator now needs to migrate the LPAR back to the POWER6 system, but it fails to validate.

There have been no changes in the LPAR profile, network, or in the SAN configuration. Which action will enable the operation to complete successfully?

- A. Set the processor mode to default on the source profile and restart the LPAR.
- B. Set the processor mode to POWER6 on the source profile and restart the LPAR.
- C. Set the processor mode to Shared on the source profile and restart the LPAR.
- D. Set the processor mode to Dedicated on the source profile and restart the LPAR.

**Correct Answer:** B

**Section: (none)**

**Explanation**

**Explanation/Reference:**

**QUESTION 63**

Given the following lspath command output from an LPAR, what is the most likely reason for the current situation?

```
$ lspath
Failed hdisk0 vscsi0
Enabled hdisk0 vscsi1
Failed hdisk1 fscsi0
Failed hdisk1 fscsi0
Enabled hdisk1 fscsi1
Enabled hdisk1 fscsi1
Failed hdisk2 fscsi0
Failed hdisk2 fscsi0
Enabled hdisk2 fscsi1
Enabled hdisk2 fscsi1
Failed hdisk3 fscsi0
Failed hdisk3 fscsi0
Enabled hdisk3 fscsi1
Enabled hdisk3 fscsi1
```

- A. SDDPCM daemon not loaded
- B. Partial SAN failure
- C. Redundant VIO server outage
- D. Incomplete NPIV configuration

**Correct Answer: C**

**Section: (none)**

**Explanation**

**Explanation/Reference:**

**QUESTION 64**

Following the reboot of one VIO server (VIOS) in a redundant configuration, a client is showing failed disk paths on some channels.

What is the most likely reason the disk paths have failed?

- A. MPIO drivers have not been installed on the client.
- B. VIOS Fibre Channel adapters have created a private loop as the attribute init\_link has not been set.
- C. vSCSI and disk attributes vscsi\_err\_recov, vscsi\_path\_to & hcheck\_interval have not been configured.
- D. Disk attributes on VIOS for the reserve policy on the disk is not set to no\_reserve.

**Correct Answer: C**

**Section: (none)**

**Explanation**

**Explanation/Reference:**

#### **QUESTION 65**

A customer has four LPARs: VIO1, VIO2, LPAR1 and LPAR2 VIO Servers (VIOS) are configured with SEA adapter failover and 802.1Q is enabled on the LPARs.

During scheduled maintenance, VIO1 is brought down and the SEA failover happens automatically.

However, network traffic is not leaving the VIO for LPAR1.

The SEA interfaces are setup as follows:

VIO1 - SEA  
PVIDs 55,60,65,70  
VIO2 - SEA  
PVIDs 45,60,65,75

The LPARs have their virtual network devices setup as follows:

LPAR1 - Adapter ID 55 - VLAN ID 75  
LPAR2 - Adapter ID 60 - VLAN ID 45

What is the reason for the networking problem?

- A. LPAR1 has the wrong VLAN ID configured.
- B. VIO2 has the wrong VLAN IDs configured.
- C. The LPARs have the wrong adapter IDs configured.
- D. The LPARs and the VIO servers are on different subnets.

**Correct Answer: B**

**Section: (none)**

**Explanation****Explanation/Reference:****QUESTION 66**

An administrator needs to update a legacy VIO server (VIOS) partition from version 1.5 to the most current version. The rootvg of the VIOS server is presented from SAN and is managed using the SDDPCM package.

Which of the following must be considered?

- A. The latest version of SDDPCM should be included in the NIM lppsource for the upgrade.
- B. The IBM supplied scripts and procedures should be followed in order to migrate VIOS with SDDPCM.
- C. SDDPCM is now included in AIX 6. Upgrading of the package will occur automatically.
- D. SDDPCM must be upgraded immediately before the VIOS migration.

**Correct Answer: B**

**Section: (none)**

**Explanation****Explanation/Reference:**

modified.

**QUESTION 67**

After applying the latest Fix Pack to a VIO server, the administrator finds an issue with the hosted media repository. The lsrep command fails with the following error:

"Unable to retrieve repository date due to incomplete repository structure"

What is the most likely cause for this error?

- A. The VIO server has not been rebooted since applying the Fix Pack.
- B. The Fix Pack reset the date and time to the shipped default.
- C. The repository was in a loaded state prior to applying the Fix Pack.
- D. The reboot caused the repository to forcibly unmount.

**Correct Answer: C**

**Section: (none)**

**Explanation****Explanation/Reference:**

**QUESTION 68**

An administrator is attempting to apply a Fix Pack to an VIO server which is not connected to a network. The administrator loaded the Fix Pack DVD into the drive. The updates command fails with an error stating that the local SAS optical drive is busy.

What must be verified before attempting to use the optical drive?

- A. That the appropriate SAS adapter is allocated to the VIO LPAR.
- B. That the device is mounted with Read/Write permissions.
- C. That the media repository on the VIO LPAR is forced offline.
- D. That the optical device is allocated to the VIO LPAR.

**Correct Answer:** D

**Section:** (none)

**Explanation**

**Explanation/Reference:**

**QUESTION 69**

An administrator is troubleshooting a network connectivity error on a POWER blade. Checking netstat, the administrator can see that the relevant adapter is "up and running". A ping test to the default gateway times out.

Checking on another adapter, connected to the same LPAR, ping works as expected.

What needs to be checked?

- A. If the switch module port for the adapter is enabled and plugged in
- B. If the mapping between network adapter and switch module port is correct
- C. If the MCS value is correctly sized for the number of LHEAs
- D. If the CIOv network adapter is installed in the correct slot

**Correct Answer:** C

**Section:** (none)

**Explanation**

**Explanation/Reference:**

**QUESTION 70**

After a hardware failure, a VIO server has been restored from a mksysb image on a NIM server. When the VIO server boots, the client LPARs have no

network access?

What is the cause of this problem?

- A. The VIO server was configured to remain as a NIM client.
- B. The backupios command was not run correctly.
- C. Automatic device recovery is not supported by NIM restores.
- D. The client LPAR virtual network adapters have not been recreated

**Correct Answer:** A

**Section:** (none)

**Explanation**

**Explanation/Reference:**

## QUESTION 71

Which of the following statements regarding the implementation of Multiple Shared Processor Pools (MSPPs) is correct?

- A. MSPPs allow for both IBM and third party applications to be licensed for a subset of physical processors.
- B. MSPPs allow the restriction of transferring available processor cycles from one set of LPARs to another.
- C. MSPPs allow processor capacity consumption to be restricted to a set of LPARs.
- D. MSPPs allow for physical sets of processors to be reserved for specific sets of LPARs.

**Correct Answer:** C

**Section:** (none)

**Explanation**

**Explanation/Reference:**

## QUESTION 72

An administrator is planning to update a server managed with Integrated Visualization Manager (IVM) from version 1.5 to version 2.2.

Which of the following statements should the administrator take into consideration?

- A. The migration can only occur using a Serial Over LAN (SOL) console.
- B. The administrator should use the Advanced Management Module (AMM) interface to specify the location of the migration DVD.
- C. All client partitions should be shut down before starting the migration to avoid data corruption.
- D. The partition profile data will need to be saved before the migration and restored once the migration is complete.

**Correct Answer:** C

**Section:** (none)

**Explanation**

**Explanation/Reference:**

#### **QUESTION 73**

A redundant pair of VIO Servers is used to virtualize the same SAN LUNs to a number of AIX LPARs. To ensure that Multipath 10 is correctly configured an administrator sets the appropriate device attributes on the vSCSI disks on the clients.

One of the VIO Servers was shut down for 5 minutes to simulate a failure. After the VIO Server was brought back online, the administrator found that some LPARs recovered their storage paths automatically, yet some LPARs did not recover their paths at all.

How can the administrator recover from the lack of path recovery?

- A. Reboot the client LPARs.
- B. Allocate both vSCSI adapters to the client LPARs.
- C. Update SDDPCM to a level higher than 2.1.2.3.
- D. Reduce the number of paths to the LUNS to 6 or less.

**Correct Answer:** A

**Section:** (none)

**Explanation**

**Explanation/Reference:**

#### **QUESTION 74**

A key customer application currently can only be hosted under AIX 5.2. Development work is underway to update the application to be compatible with more current versions of AIX. An administrator notices hardware errors are being logged against the legacy POWER3 hardware.

To preserve the application in its current form while avoiding the cost of repairing the legacy hardware, the administrator plans to migrate the application into a versioned WPAR.

The administrator understands that an intact mksysb image of the 5.2 system is required. Which additional elements are required?

- A. Hosting AIX 6.1 LPAR AIX 5.2 NIM server POWER6 hardware
- B. HMC-managed hardware PowerVM Enterprise edition AIX 7.1
- C. AIX 7.1vwpar.52 images LPP POWER7 hardware

D. AIX 7.1 NIM server POWER7 hardware PowerVM WPAR Manager

**Correct Answer:** C

**Section:** (none)

**Explanation**

**Explanation/Reference:**

#### QUESTION 75

Which backup scenario will enable a VIO server to be recovered as quickly as possible in the event of a disaster?

- A. `mkdir/backupssavevgstruct rootvgbackupios -file /backups -mksysb /home/ios/vgbackups`
- B. `mknfsmnt-f/backups-d/backups-hnim1 -trw-wbg-S mount/backups backupios -file /backups/viol .mksysb`
- C. `cfgsv-is rootvgsavevgstruct rootvgbackupios -file /backups -mksysb /home/ios/vgbackups`
- D. `mkvg-vgbackupvghdisk1crfs -vjfs2 -g backupvg -m /backups -A yes -p rw -a size=10G -a logname=INLINEmount/backupsbackupios -file /backups/vio1 .mksysb`

**Correct Answer:** B

**Section:** (none)

**Explanation**

**Explanation/Reference:**

#### QUESTION 76

An administrator is creating a WPAR with isolated file system spaces. Before creating the WPAR, what should the administrator do?

- A. Add the IP address of the new WPAR to the `/etc/hosts` file in the global environment
- B. Ensure the `bos.wpars` fileset is installed on the system.
- C. Add the `/wparfilesystem` to the global environment
- D. Ensure the target disk for the WPAR is not in use.

**Correct Answer:** C

**Section:** (none)

**Explanation**

**Explanation/Reference:**

#### QUESTION 77



A WPAR environment is being planned. The WPARs will run applications which are to be completely contained since the network is insecure. How would this be structured?

- A. WPARs are to be accessed only through the global environment with a clogin.
- B. A private network is automatically configured from the global environment to each WPAR.
- C. The localnet attribute will be used on WPAR creation from the global environment.
- D. Inside the WPAR, the net\_login attribute of sys0 will be set to false.

**Correct Answer:** A

**Section:** (none)

**Explanation**

**Explanation/Reference:**

#### **QUESTION 78**

Which of the following is required when configuring an LPAR that will later be used for Live Partition Mobility?

- A. All physical I/O must be allocated as "Desired" in LPAR properties
- B. Virtual Fibre Channel adapters must be marked as "Desired".
- C. Virtual Ethernet adapters must be configured as EtherChannels.
- D. Virtual SCSI adapters must be marked as "Desired".

**Correct Answer:** A

**Section:** (none)

**Explanation**

**Explanation/Reference:**

#### **QUESTION 79**

An administrator has a Power 720 with 64GB of memory and Active Memory Expansion (AME).

An LPAR has only 10GB of memory available and an application has been sized at 15GB of memory. The administrator runs amepat to determine an efficient expansion factor. Based on the output, an expansion factor of 1.6 has been chosen.

How should this be configured in the LPAR?

- A. Enter 16GB as 'desired', enter 1.6 in the Active memory expansion factor field.
- B. Enter 10GB as 'desired', enter 1.6 in the Active memory expansion factor field.

- C. Enter 10GB as 'desired' and modify/etc/ame.conf with AME\_RATIO=1.6.
- D. Enter 16GB as 'desired' and modify/etc/ame.conf with AME\_RATIO=1.6.

**Correct Answer:** B

**Section:** (none)

**Explanation**

**Explanation/Reference:**

#### **QUESTION 80**

When creating a new LPAR, what should be considered when setting the maximum value for memory?

- A. On a given system, by default the Hypervisor reserves 2.5GB of the system memory, regardless of the maximum memory allocation for an LPAR.
- B. The maximum memory value should be a multiple of the desired memory and the Logical Memory Block (LMB) to ensure minimal Hypervisor memory overhead.
- C. The Hypervisor will reserve a fraction of the maximum memory value for page tables.
- D. Where the maximum value exceeds 32GB, the Barrier Synchronization Register value needs to be set appropriately in the LPAR profile.

**Correct Answer:** C

**Section:** (none)

**Explanation**

**Explanation/Reference:**

#### **QUESTION 81**

An administrator has an existing NIM server running AIX 5.3 TL9. They would like to use this NIM server to upgrade an existing VIO server (VIOS) partition from version 1.5 to version 2.2 FP24.

- A. Upgrade the VIOS LPAR to Fix Pack 12.
- B. Commit all applied e-fix packages in the VIOS partition.
- C. Upgrade the NIM server to AIX 6.1 TL6.
- D. Ensure that Virtual I/O Tools have been installed on the NIM server.

**Correct Answer:** C

**Section:** (none)

**Explanation**

**Explanation/Reference:**

## QUESTION 82

Certain configurations of Power 770 and Power 780 servers can be ordered with multiple IVE adapters. When designing a configuration to provide improved network availability what fact should be observed as a risk?

- A. 1Gbps and 10Gbps adapters may not be aggregated into a single logical link.
- B. The same model of IVE must be ordered for each building block.
- C. IVE adapters do not support hot-plug operations.
- D. An EtherChannel device created from adjacent IVE ports can result in broadcast storms.

**Correct Answer: C**

**Section: (none)**

**Explanation**

**Explanation/Reference:**

## QUESTION 83

An administrator is planning to install a new WPAR and intends to use Live Application Mobility between source and target Power Systems servers.

What must be considered when configuring the storage layout of the WPAR?

- A. NPIV backed SAN devices must be mapped to the global environment on the source and target servers.
- B. NFS filesystems must be available on the source and target global environments and the WPAR.
- C. The /opt, /usr and /proc filesystems must be backed by NFS storage on a WPAR.
- D. Shared NPIV storage must be mapped to both source and target systems.

**Correct Answer: B**

**Section: (none)**

**Explanation**

**Explanation/Reference:**

## QUESTION 84

What configuration change must be made on a Power Systems server to allow a Host Ethernet Adapter (HEA) to be used as part of a Shared Ethernet Adapter (SEA) on a Virtual I/O Server?

- A. The HEA port must be set to promiscuous mode.
- B. Set the HEA Port Group Multi-Core Scaling value to 1.

- C. Enable 802.11Q protocol on the HEA port that will be assigned to the SEA.
- D. Set the "Allowable VLAN IDs" to the PVID of the VIOS Virtual Ethernet Adapter.

**Correct Answer:** A

**Section:** (none)

**Explanation**

**Explanation/Reference:**

#### **QUESTION 85**

While trying to reject recent updates to the VIOS, an administrator received an error message stating that a file set may not be rejected because a dependent file set is committed.

Which command can be used to overcome this error?

- A. `updateios -reject-f <committed_fileset_name>`
- B. `updateios -remove <committed_fileset_name>`
- C. `updateios -commit -u <committed_fileset_name>`
- D. `updateios -cleanup <committed_fileset_name>`

**Correct Answer:** B

**Section:** (none)

**Explanation**

**Explanation/Reference:**

#### **QUESTION 86**

A Power Systems server is configured with a VIO server and several client LPARs. The administrator wants to use the padmin user to create a script, which will run on the VIO server to back it up to a remote system. Script output must be collected. How can this be achieved?

- A. Create a backup script in /home/padminRun the script redirecting stdout and stderr to a log file
- B. Create a backup script in /usr/ios/cliRun "crontab -e root" to configure root to run it and redirect the output
- C. Create a backup script in /home/padminUse ssh from a remote system to run the script and capture the output on the remote system.
- D. Create a backup script in /usr/ios/cliUse the "script" command in the shell program, to collect the output.

**Correct Answer:** C

**Section:** (none)

**Explanation**

**Explanation/Reference:**

**QUESTION 87**

An administrator is planning to configure two new Power Systems servers for Live Partition Mobility (LPM). Each server will be connected to a separate HMC. What is required to achieve this in addition to those requirements needed for LPM with a common HMC?

- A. An RMC connection between each VIO partitionSSL key exchange between each VIO partition and all FSPs
- B. An RMC connection between both HMCsSSH key exchange between all HMCs and FSPs
- C. A common IP network between all VIO partitionsRMC key exchange between both HMCs and all VIO partitions
- D. A common IP network between both HMCs SSH key exchange between both HMCs

**Correct Answer:** D

**Section:** (none)

**Explanation**

**Explanation/Reference:**

**QUESTION 88**

An LPAR requires more disk space so an application logging filesystem in datavg can be extended. There is an unused LUN, hdisk5, on the VIO Server. Which command (or commands) will map the drive directly to the client?

- A. mkvdev-vdev hdisk5 -vadaptervhost3 -devtest1\_disk5
- B. mkvdev-vdevvhost3-devhdisk5-vadaptest1\_disk5
- C. extendvg datavg hdisk5 mklv-lv testl \_disk5 datavg mkvdev -vdev testl \_di sk5 -vadapter vhost3
- D. extendvg datavg hdisk5mkvdev -vdev hdisk5 -vadapter vhost3 mklv -lv testl disks -vdev vhost3

**Correct Answer:** A

**Section:** (none)

**Explanation**

**Explanation/Reference:**

**QUESTION 89**

An architect is planning to configure a Power 750 server with redundant VIO Servers and multiple client LPARs. What tool can be used to plan and design the IVE setup for the LPARs?

- A. IBM System Director
- B. Advanced System Management Interface
- C. Integrated Visualization Manager
- D. System Planning Tool

**Correct Answer:** D

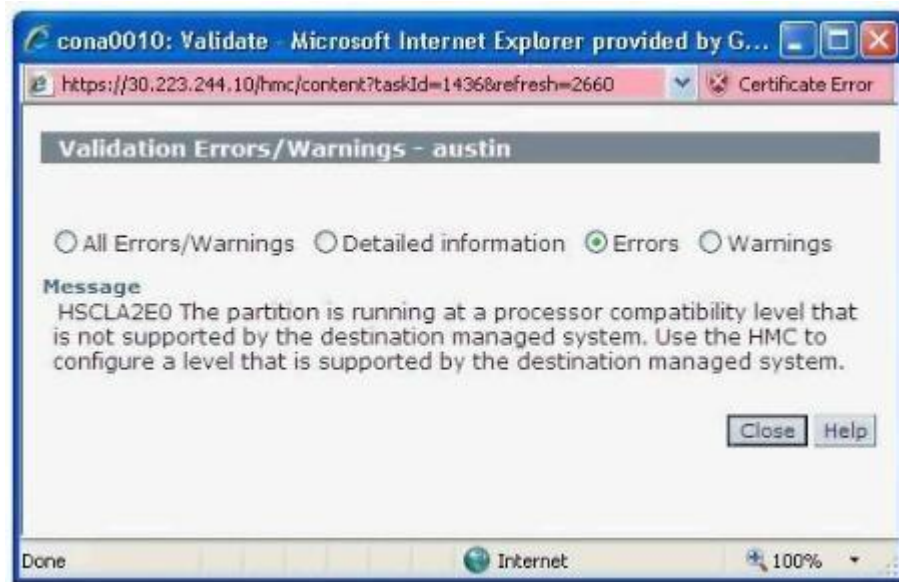
**Section:** (none)

**Explanation**

**Explanation/Reference:**

#### QUESTION 90

An administrator needs to migrate an AIX partition from a POWER7 server to a legacy POWER6 595. When performing a Live Partition Mobility operation, the following error is received:



Looking at the partition profile properties for CPU  
Which of the following actions would solve the problem?

- A. Change the processor compatibility mode to LEGACY on the target system.
- B. Change the processor compatibility mode to POWER6 on the source partition.

- C. Change the processor compatibility mode to POWER7 on the source partition.
- D. Change the processor compatibility mode to ENHANCED on the target system

**Correct Answer:** A

**Section:** (none)

**Explanation**

**Explanation/Reference:**

#### **QUESTION 91**

When planning a deployment what should be noted about the Virtual Media Repository when compared to other storage visualization offered by a VIO Server?

- A. The repository is vulnerable to VIO Server outage.
- B. Only AIX and Linux LPARs can be clients of the repository.
- C. DVD media must be virtualized through the repository in read-only mode.
- D. Items within the repository must be virtualized through an NPIV adapter.

**Correct Answer:** A

**Section:** (none)

**Explanation**

**Explanation/Reference:**

#### **QUESTION 92**

An administrator tries to dynamically increase the processor capacity entitlement of LPAR1 from 1.0 to 2.0. The current entitlement is 1.0 and the maximum is set to 3.0.

The operation fails. When the administrator adds up the number of processors in use by the currently running LPARs, there are 4 processors available. The administrator also notes that LPAR2 is inactive.

What is the cause of this failure?

- A. LPAR1 has "Allow when partition active" in the Processor Sharing section CHECKED in its profile
- B. LPAR2 has "Allow when partition inactive" in the Processor Sharing section NOT CHECKED in its profile
- C. LPAR2 has "Allow when partition inactive" in the Processor Sharing section CHECKED in its profile
- D. LPAR1 has "Allow when partition active" in the Processor Sharing section NOT CHECKED in its profile

**Correct Answer:** B

**Section: (none)**

**Explanation**

**Explanation/Reference:**

super valid.

**QUESTION 93**

An administrator is configuring a new virtual Fibre Channel connection that will use NPIV to connect a client LPAR to a SAN.

The administrator has created a client adapter in virtual slot 8 and a server adapter in virtual slot 600. The appropriate virtual adapter definitions have been successfully added into the client and VIO server profiles and a DLPAR operation to add the virtual adapters into both partitions.

The administrator runs `cfgmgr` on the client partition but receives an error. The administrator then checks the definition of the client adapter in AIX



```
#
#
#
# cfigmgr
Method error (/usr/lib/methods/cfigfscsi -l fscsi0 ):
    0514-061 Cannot find a child device.

# lscfg -l fcs0
# fcs0          U9119.FHB.51ABCDE-V3-C8-T1  Virtual Fibre Channel Client Adapter
#
```

The administrator also checks the VIO server configuration

```
padmin#
padmin# lsmmap -vadapter vfchost0 -npiv
```

Name	Physloc	ClntID	ClntName	ClntOS
vfchost0	U9119.FHB.51ABCDE-V1-C600	3		

```

Status:NOT_LOGGED_IN
FC name:                FC loc code:
Ports logged in:0
Flags:1<NOT_MAPPED,NOT_CONNECTED>
VFC client name:        VFC client DRC:

```

Based on this information, what is the most likely cause of the error?

- A. The virtual Fibre Channel server adapters are not supported with virtual slot numbers higher than 512.
- B. The virtual server adapter has been incorrectly mapped to virtual slot 3 for the client.
- C. The virtual server adapter has not been mapped to a physical Fibre Channel adapter.
- D. The virtual Fibre Channel device driver has not been installed on the client.

**Correct Answer: C**

**Section: (none)**

**Explanation**

**Explanation/Reference:**

## **QUESTION 94**

A customer is in the process of configuring a redundant pair of VIO Servers. They need to test that SEA failover has been correctly enabled.

Which command can the padmin UserID use to verify which SEA is currently the primary interface?

- A. entstat
- B. fcstat
- C. seastat
- D. vasistat

**Correct Answer: A**

**Section: (none)**

**Explanation**

**Explanation/Reference:**

## **QUESTION 95**

A company has purchased a Power 770 server and will be implementing a virtual environment for transaction processing. What method can be used to configure the new system to easily allow for an identical environment at a disaster recovery site?

- A. Record the profile information for each partition.
- B. Perform remote VIO server backups to the disaster recovery site.
- C. Maintain the primary and recovery site with IBM Systems Director.
- D. Deploy a sysplan that was created by the System Planning Tool.

**Correct Answer: D**

**Section: (none)**

**Explanation**

**Explanation/Reference:**

**QUESTION 96**

What is necessary to install and configure IVM to use the network interface?

- A. SSH Key Manager
- B. A serial connection
- C. The IBM HTTP Server
- D. A private IP address

**Correct Answer:** B

**Section:** (none)

**Explanation**

**Explanation/Reference:**

**QUESTION 97**

How can SMT be temporarily disabled at the next boot of a Linux LPAR?

- A. Update/proc/cpuinfo special device file.
- B. Use the ppc64\_cpu command.
- C. Set linux smt-enabled=off at the boot: prompt.
- D. Use the smtctl command.

**Correct Answer:** C

**Section:** (none)

**Explanation**

**Explanation/Reference:**

**QUESTION 98**

An administrator has dynamically allocated a new virtual FC adapter to an AIX client. When running cfgmgr on the client, the administrator receives the following error:

Method error (/usr/lib/methods/cfg\_vfc -l fcs0):  
0514-040 Error initializing a device into the kernel

Which of the following could explain the error?

- A. The client adapter has been configured to use a 32bit kernel.
- B. The fileset devices.vdevice.vfc-client.rte needs to be installed.
- C. The physical fibre channel adapter on the VIO server does not support NPIV.
- D. The client adapter has been configured to use an invalid virtual server adapter

**Correct Answer:** D

**Section:** (none)

**Explanation**

**Explanation/Reference:**

#### **QUESTION 99**

Consider the following extract from the command `lsmap -all -npiv -fmt:`

```
vfchost0:U9119.FHA.44ABCDE-V2-C642:47:: :NOT_LOGGED_IN;fcs2:U5803.001.9112345-P2- C7-T1:0:4::
```

```
vfchost1:U9119.FHA44ABCDE-V2-C643:48:lpar02AIX:LOGGED_IN;fcs2:U5803.001.9112345-P2- C7-T1:5:a:fcsO:U9119.FHA 44ABCDE-V48-C8-T1
```

From this information which of the following statements is true?

- A. Virtual adapter vfchost1 is providing rootvg to the client LPAR.
- B. Virtual adapter vfchost0 tried an invalid path to the SAN.
- C. Virtual adapter vfchost1 is associated with adapterfcs0 on lpar02.
- D. Virtual adapter vfchost0 is pointing to client LPAR id 47.

**Correct Answer:** C

**Section:** (none)

**Explanation**

**Explanation/Reference:**

#### **QUESTION 100**

A customer is planning a new multi-tiered web based retail solution. The solution will be implemented on AIX, running on POWER7 based servers. Several options are being considered, including one enterprise class system, two mid-range systems, or several entry level systems. Which of these documents will allow for an easy side-by-side comparison of the various models in the Power Systems range?

- A. AIX From Strength to Strength

- B. POWER7 Systems Facts and Features
- C. Redpaper: IBM Systems Virtualization: Servers, Storage, and Software
- D. IBM Power Systems Comparison Manual

**Correct Answer:** B

**Section:** (none)

**Explanation**

**Explanation/Reference:**

#### **QUESTION 101**

What is the purpose of the Virtual Asynchronous Services Interface (VASI) during Live Partition Mobility?

- A. It is used by the Hypervisor to determine the placement of the mobile partition's threads.
- B. It is used by the Mover Service Partition to communicate with the Hypervisor.
- C. It is used to direct the Hypervisor's placement of the mobile partition's memory tables.
- D. It is used by the Hypervisor to coordinate the I/O movement between the Virtual I/O Servers.

**Correct Answer:** B

**Section:** (none)

**Explanation**

**Explanation/Reference:**

#### **QUESTION 102**

A system administrator needs to configure a redundant network environment for several AIX and Linux clients on a Power Systems server. Which highly available Virtual I/O server network solution should be used to meet this requirement?

- A. Shared Ethernet Adapter Failover
- B. Network Interface Backup
- C. Link Aggregation
- D. VLAN tagging

**Correct Answer:** A

**Section:** (none)

**Explanation**

**Explanation/Reference:**

**QUESTION 103**

A POWER7 system has been recently installed and 4 uncapped shared processor LPARs have been defined.

Name - CPU - Min/Des/Max			
PROD1	1	2	4
PROD2	1	2	4
DEV1	0.5	1	2
DEV2	0.5	1	2

The use of Multiple Shared Processor Pools has been decided upon for licensing and performance reasons.

The pools are as follows:

Name		Max proc. units/reserved	
Production	5	1	
Development	3	1	

When adding PROD1 to the Production pool via the command line, the following error is given "This operation is not allowed because the partition is using dedicated processors"

Why is this error being received?

- A. POWER6 mode is enabled
- B. LPAR has not been powered on
- C. LPAR has been powered on
- D. The Pool has insufficient processor units

**Correct Answer:** B

**Section:** (none)

**Explanation**

**Explanation/Reference:**

**QUESTION 104**

A VIO server requires redundancy on its Shared Ethernet Adapter (SEA). The SEA is backed by physical adapter ent0 and virtual adapter ent2, ent0 and ent1 are the interfaces on a dual-port Ethernet adapter.

What network redundancy technique should be suggested?

- A. ent1 should be used to set up a Network Interface Backup through 'smitty etherchannel1. The new Etherchannel adapter should be used as the backing device for the SEA
- B. ent1 should be used to set up Link Aggregation through 'smitty linkagg1. The new Link Aggregation adapter should be used as the backing device for the SEA
- C. Create a new SEA using another virtual Ethernet adapter on the VIO Server and assign ent1 as the backing device. Assign this SEA to the clients and setup Link Aggregation on the clients.
- D. Setup the SEA failover control channel to use the ent1 physical adapter as the backup control channel.

**Correct Answer:** A

**Section:** (none)

**Explanation**

**Explanation/Reference:**

## QUESTION 105

An administrator would like to use system plans to clone the partition definitions of an existing Power 795 system to a new Power 795. Both systems have the same hardware configuration.

When the administrator attempts to deploy the system plan taken from the old system to the new one the 'Deploy System Plan' wizard fails at the hardware validation stage.

Which of the following actions would allow the administrator to deploy the system plan from the old system to the new?

- A. Select the 'Ignore Hardware Validation' option when deploying the System Plan.
- B. Use the System Plan Conversion Wizard from the System Plans menu on the HMC.
- C. Export the original sysplan with the 'Allow Deployment On Remote System1 option.
- D. Use the System Planning Tool (SPT) to validate and convert the original system plan for deployment.

**Correct Answer:** D

**Section:** (none)

**Explanation**

**Explanation/Reference:**

## QUESTION 106

Which of the following statements is true when mirroring of the VIO server rootvg?

- A. Only the root user can perform mirroring.
- B. Mirroring is active when the command completes.
- C. Mirroring operations must be performed from a virtual console.
- D. A system reboot will immediately occur upon completion of mirroring.

**Correct Answer:** D

**Section:** (none)

**Explanation**

**Explanation/Reference:**

#### **QUESTION 107**

What is the default number of NPIV adapters which can be assigned by the Power Hypervisor?

- A. 500
- B. 1024
- C. 32000
- D. 65536

**Correct Answer:** C

**Section:** (none)

**Explanation**

**Explanation/Reference:**

#### **QUESTION 108**

A number of uncapped partitions, which do not use multiple shared processor pools, are requesting additional processor resources. There are not enough resources available to satisfy all the requests. How does the hypervisor determine allocation of the available resources?

- A. Each partition would receive a share based on weighting value of the partition as a fraction 1000 clock ticks for a millisecond.
- B. Each partition would receive a share of the available resource based on the delta between the desired and maximum entitlement.
- C. Each partition would receive a share based on the weighting value of the partition as a fraction of the sum of all the requesting partitions weights.
- D. Each partition would receive a share based on the maximum entitlement of the partition as a fraction of the sum of all the requesting partitions' entitlements.

**Correct Answer:** C

**Section:** (none)

**Explanation**



**Explanation/Reference:**

answer is verified.

**QUESTION 109**

A VIO client is using a virtual network adapter to supply network connectivity to VLAN 10 from VIOL. The VIO client now needs to access VLAN 20 which is supplied from VI02.

How can this be achieved?

- A. Create a new virtual Ethernet adapter to access the external network on VIOL1. Add an additional virtual network adapter to the VIO client using DLPAR. Modify the profile to reflect these changes.
- B. Change the VI01 profile to reflect the changed virtual network adapter. Use DLPAR to change the VI01 virtual network adapter to use VLAN 20.
- C. On VIOL use the mkvdev command to add VLAN 20 to the SEA. Add an alias to the VIO client Ethernet interface with an IP address of the VLAN 20 subnet.
- D. Change the VIO client profile to reflect the additional virtual network adapter. Use DLPAR to add a virtual network adapter onto the VIO client with VLAN 20.

**Correct Answer: D**

**Section: (none)**

**Explanation**

**Explanation/Reference:**

**QUESTION 110**

An administrator needs to install AIX on 50 LPARs on a new Power 795. All partitions require the same level of customization and the same version of AIX. For security reasons, NIM cannot be used in this environment.

The new system has a single DVD RAM drive. A Single VIO partition has already been configured.

Which of the following will allow the administrator to install the partitions in the shortest possible time?

- A. Allocate a DVD RAM device to the first partition. Build and customize the first partition. Create a mksysb of the partition to DVD RAM. Use the DVD RAM image to install the remaining partitions.
- B. Map a virtual optical DVD RAM device from the HMC to the first partition. Build and customize the first partition. Create a mksysb of the partition to DVD RAM. Use the DVD RAM image to install the remaining partitions.
- C. Build and customize the first partition from DVD RAM. Create a mksysb of the partition and copy to the HMC. Configure NIMOL on the HMC. Install the remaining clients using NIMOL.
- D. Build and customize the first partition from DVD RAM. Create a mksysb and use to build a bootable ISO image. Install the ISO image in the virtual media library on a VIO server partition. Install remaining clients using image mapped from virtual media library.

**Correct Answer:** D

**Section:** (none)

**Explanation**

**Explanation/Reference:**

**QUESTION 111**

What is the default weight when creating an uncapped, shared processor LPAR?

- A. 32
- B. 64
- C. 128
- D. 256

**Correct Answer:** C

**Section:** (none)

**Explanation**

**Explanation/Reference:**

**QUESTION 112**

An administrator would like to create AIX 5.2 Workload Partitions (WPARs) on a new POWER7 system.

Which of the following is the minimum needed to achieve this?

- A. PowerVM Enterprise Edition AIX 5.2 Workload Partitions for AIX
- B. PowerVM Standard Edition WPAR Manager 2.1
- C. AIX 7.1 Express Edition AIX 5.2 Workload Partitions for AIX
- D. AIX 7.1 Enterprise Edition WPAR Manager 2.1

**Correct Answer:** A

**Section:** (none)

**Explanation**

**Explanation/Reference:**

**QUESTION 113**

A Power Systems server has two HMCs connected to its Flexible Service Processor (FSP). It is decided to upgrade one of them to a later hardware

version. The 7042-CR3 is disconnected and the new 7042- CR6 is connected in its place. The new HMC successfully discovers the managed server but some operations including DLPAR are failing.

Which action will allow the managed server and HMC to establish new RMC configurations?

- A. Run "/usr/sbin/rsct/install/bin/recfgct" in each LPAR.
- B. Run "refresh -s IBM DRM" in each LPAR
- C. Use the "Reset Or Remove Connection" panel on the HMC.
- D. Reset the RMC connection in the Console menu option in ASMI

**Correct Answer:** A

**Section:** (none)

**Explanation**

**Explanation/Reference:**

#### **QUESTION 114**

An administrator is designing a new system for a currently existing OLTP (Online Transaction Processing) application. It is heavily batch oriented and relies heavily on secondary storage. Which storage method should be implemented in order to achieve the highest possible throughput?

- A. VIO mapped SAN LUNs
- B. NPIV attached SAN LUNs
- C. VIO mapped Logical Volumes
- D. Directly attached SAN LUNs

**Correct Answer:** D

**Section:** (none)

**Explanation**

**Explanation/Reference:**

#### **QUESTION 115**

An administrator has a Power 770 with 5 application LPARs and 1 LPAR used by the backup system. The administrator is designing the backup network for this system.

What is a major advantage using Virtual Ethernet compared to using Dedicated Adapters, especially in relation to backups?

- A. TCP re-segmentation enabled
- B. Jumbo Frames supported

- C. Fewer physical resources required
- D. IPv6 native support

**Correct Answer:** C

**Section:** (none)

**Explanation**

**Explanation/Reference:**

## **QUESTION 116**

A system is being designed with redundant VIO servers which will each support networking and storage for 17 client partitions. What is the minimum quantity of adapters needed to support the networking and storage requirements?

- A. 1
- B. 2
- C. 4
- D. 8

**Correct Answer:** B

**Section:** (none)

**Explanation**

**Explanation/Reference:**

## **QUESTION 117**

During a Live Partition Mobility action, the network on one of the MSPs fails and an error is shown. Checking the HMC, the administrator sees the following:

Select ^	Name ^	ID ^	Server ^	Status ^	Processing Units ^	Memory (GB) ^	Active Profile ^	Environment
<input type="checkbox"/>	DIRECTOR	4	p550-SN106629E	Running	1	4	default	AIX or Linux
<input type="checkbox"/>	mobile	5	9117-MMA-SN100F6A0-L9	Migrating - Not Activated	0.3	7	remote mobile	AIX or Linux
<input type="checkbox"/>	mobile	5	9117-MMA-SN101F170-L10	Migrating - Running	0.3	7	remote_mobile	AIX or Linux
<input type="checkbox"/>	mobiles2	2	9117-MMA-SN101F170-L10	Not Activated	0.3	2	mobiles2_default	AIX or Linux

What is the current state of the source LPAR?

- A. Running and accessible as normal
- B. Running but inaccessible via network
- C. Running but with read-only SAN connectivity
- D. Running but in a restricted state

**Correct Answer:** A

**Section:** (none)

**Explanation**

**Explanation/Reference:**

### QUESTION 118

An administrator has configured a system to provide resilient networking through the use of SEA failover. The administrator wants to know if the SEA for one VIO server, ent10, is the active adapter.

Which of the following commands could the administrator use to determine the status of ent10?

- A. entstat-netent10
- B. lsmmap-net-devent10
- C. seastat-liststatent10
- D. netstat -cdlistats ent10

**Correct Answer:** D

**Section: (none)**

**Explanation**

**Explanation/Reference:**

**QUESTION 119**

An architect is considering whether to specify vSCSI or NPIV for the rootvg disks in a new virtualized environment. Storage is to be provided by an IBM San Volume Controller (SVC) and controlled using SDDPCM.

Which of the following is an advantage of using vSCSI technology instead of NPIV?

- A. Support for vSCSI devices is included within base AIX, removing the need to install device drivers at the client level.
- B. Queue depths higher than 20 for rootvg disks are supported with vSCSI.
- C. vSCSI allows for client level logical volume mirroring for rootvg, providing enhanced protection.
- D. vSCSI provides active/active multi pathing, allowing I/O requests to be distributed between dual VIOS partitions

**Correct Answer: A**

**Section: (none)**

**Explanation**

**Explanation/Reference:**

**QUESTION 120**

A company wants to migrate an existing x86 Linux CRM and database environment from a large cluster of servers to a Power 750 server. How can they perform this with minimal costs and rapid deployment?

- A. Create virtual LPARs with Linux and migrate the applications, porting the x86 applications to Power.
- B. Create virtual LPARs with Linux and migrate the applications to IBM Middleware for Linux.
- C. Create virtual LPARs with Linux and install the applications using PowerVM Lx86.
- D. Create virtual LPARs with Linux and install the applications using VMware.

**Correct Answer: C**

**Section: (none)**

**Explanation**

**Explanation/Reference:**

**QUESTION 121**

A system is being upgraded to newer hardware. What measurement can be used to make sure the new system has the correct capacity excluding disk and network?

- A. TPC-C
- B. SPECint
- C. ROLTP
- D. rPerf

**Correct Answer:** C

**Section:** (none)

**Explanation**

**Explanation/Reference:**

#### **QUESTION 122**

As a result of an acquisition, an administrator is planning to consolidate some single-LPAR POWER6 520 servers onto an existing POWER7 server.

The administrator is attempting to make these 520 systems HMC-managed.

The network connection between the 520 system and an existing operational HMC have been verified and checked. However the POWER6 machines fail to appear on the HMC panels.

What is the most likely resolution for this issue?

- A. The POWER6 boxes need to be reset back to factory defaults.
- B. The Flexible Service Processor (FSP) needs to be reset on each POWER6 520.
- C. Upgrade to either PowerVM Standard or Enterprise edition.
- D. Power cycle the physical system.

**Correct Answer:** B

**Section:** (none)

**Explanation**

**Explanation/Reference:**

#### **QUESTION 123**

A Linux LPAR has been created and RHEL6 has been installed. The LPAR has the following characteristics:

Processor Entitlement - minimum / desired / maximum

1.0 2.0 3.0

A DLPAR operation to add 1 processor entitlement fails. Which of the followings actions will resolve this issue?

- A. Upgrade to PowerVM Standard Edition.
- B. Set `/proc/sys/kernel/rsct_dlp` to 1.
- C. Reboot the Linux LPAR and use the 64bit kernel
- D. Install the IBM Installation Toolkit for Linux.

**Correct Answer:** D

**Section:** (none)

**Explanation**

**Explanation/Reference:**

## QUESTION 124

An administrator is attempting to configure a new deployment of 56 POWER7 Blades across 4 IBM BladeCenter H chassis. Each blade will be installed with an IVM and 2 LPARs. IVM is installed and the administrator checks that both LHEA ports are reporting a Link State of "Up." 2 LPARs are created and the network traffic balanced by allocating one LHEA port to the first LPAR, the second port to the other. After successfully installing the first LPAR via NIM, the administrator finds the second LPAR fails to netboot. What should the administrator verify on the BladeCenter Chassis?

- A. That 4 power supplies (PSU) have been installed.
- B. That both the external LHEA ports have been cabled.
- C. That a secondary I/O module has been installed and cabled.
- D. That the Multi-Core Scaling (MCS) attribute is correctly set on both LHEA ports.

**Correct Answer:** C

**Section:** (none)

**Explanation**

**Explanation/Reference:**

## QUESTION 125

An administrator has a requirement to back up a VIO server (VIOS) so that it can be rebuilt in the event of a disaster. Which set of actions will achieve this requirement?

- A. Backup all non rootvg volume groups using savevg. Backup all Storage Pool Information. Run a mkysyb of the system.
- B. Save "Upgrade Data" on the HMC. Backup all non rootvg volume groups using savevg. Run a mkysyb of the VIOS with the -U flag.



- C. Backup non rootvg structures using savevgstruct. Capture virtual mappings to a file using viosbr.  
Run a backupios
- D. Capture the virtual network tuning to a file using the optimizenet command. Capture all virtual device attributes to a file using the lsattr command.  
Run a backupios.

**Correct Answer:** C

**Section:** (none)

**Explanation**

**Explanation/Reference:**

#### **QUESTION 126**

An administrator must remove any installed efices before attempting to install a new VIO Fix Pack. Which VIO command will advise if any VIO efices are actually present?

- A. lspp
- B. emgr
- C. lssw
- D. oem\_platform\_level

**Correct Answer:** C

**Section:** (none)

**Explanation**

**Explanation/Reference:**

#### **QUESTION 127**

Requirements for a disaster recovery site are being collected. When considering restoring a VIO Server mksysb to disaster recovery hardware, what is required to ensure automatic virtual device recreation?

- A. LPAR profiles must be accurately recreated on the foreign machine
- B. Backups of both mksysb and user-defined structures are required from the VIO Server
- C. The foreign machine must be of the same model and type
- D. Configuration of the existing HMC needs to be preserved

**Correct Answer:** A

**Section:** (none)

**Explanation**

**Explanation/Reference:**

**QUESTION 128**

When attempting to install a VIO client using NIM, an administrator finds that no disks are available for installation. The disks are provided by NPIV through the virtual Fibre Channel adapter as described here:

Name	Physloc	ClntID	ClntName	ClntOS
vfchost3	U9117,MMB,104200P-V2-C35	11	VIOclient	AIX

```
Status:LOGGED_IN
FC name:fcs1          FC loc code:U78C0,001,DBJ8223-P2-C2-T2
Ports logged in:3
Flags:a<LOGGED_IN,STRIP_MERGE>
VFC client name:fcs1   VFC client DRC:U9117,MMB,104200P-V11-C35-T1
```

Which of the following explains why is the administrator unable to see the disks?

- A. The virtual fibre channel device has not been assigned to the client.
- B. The HBA on the VIO server is not connected to the SAN.
- C. The fibre device drivers are missing from the SPOT.
- D. The LUNs have been incorrectly zoned.

**Correct Answer: D**

**Section: (none)**

**Explanation**

**Explanation/Reference:**

**QUESTION 129**

Which of the following is required to support AME?

- A. AIX LPARs
- B. Virtual I/O Server
- C. A maximum of 4GB of RAM per LPAR
- D. On-demand memory feature enabled

**Correct Answer:** A

**Section:** (none)

**Explanation**

**Explanation/Reference:**

**QUESTION 130**

What tool can an architect use to determine which is the smallest POWER7 server that will provide equal or better overall performance than a POWER5 570?

- A. Facts and Features Guide
- B. LPAR Validation Tool
- C. Configurator for eBusiness
- D. Server Magic

**Correct Answer:** A

**Section:** (none)

**Explanation**

**Explanation/Reference:**

**QUESTION 131**

A Power 720 is being used to build 2 environments: Test and Production, with 2 LPARs in each environment. Processor resources must be separated between the Test and Production environments to reduce possible contention, while still being able to share processor resources inside each own environment. What are the two features required, as a minimum, to accomplish this? (Select 2)

- A. IVM
- B. HMC
- C. PowerVM Express
- D. PowerVM Standard
- E. IVE
- F. IBM Systems Director

**Correct Answer:** BD

**Section:** (none)

**Explanation**

**Explanation/Reference:**

**QUESTION 132**

An administrator has the following configuration on a VIO Server:

ent0 and ent1 are Physical ports made into an EtherChannel ent3  
ent2 is a virtual device  
ent4 is a SEA mapping virtual device ent2 to ent3

The administrator runs the `entstat -d ent3` command to analyze EtherChannel statistics and receives this error:

`entstat: 0909-003 Unable to connect to device ent3, errno = 19`

Why is this error being displayed?

- A. ent3 is configured as 'standard' instead of '802.3ad'
- B. ent3 is a LHEA port and requires the -L flag
- C. ent3 has no interface connected
- D. ent3 is controlled by the SEA

**Correct Answer:** D

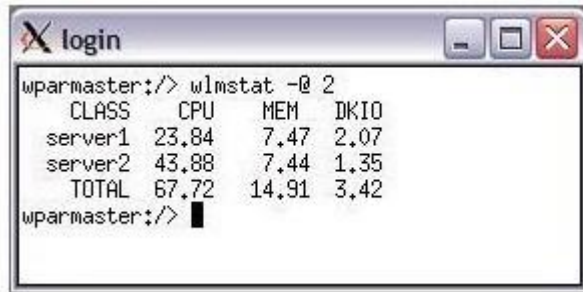
**Section:** (none)

**Explanation**

**Explanation/Reference:**

**QUESTION 133**

The `wlmstat -@ 2` command has been run from a global environment with the following results:



```
wparmater:/> wlmstat -@ 2
CLASS    CPU    MEM    DKIO
server1  23.84   7.47   2.07
server2  43.88   7.44   1.35
TOTAL    67.72  14.91   3.42
wparmater:/>
```

What action can an administrator take to set limits, so that both server1 and server2 use the same amount of CPU resources?

- A. Use the `cpu_deallocate -P` command to reduce the CPU resources on server2
- B. Use the `chsysres` command to assign the same CPU attributes to both servers.
- C. Use the `chwpair -R` command to set the CPU attributes for each server.
- D. Use the `syncwpar -E` command to copy the CPU resource allocation from server1 to server2.

**Correct Answer:** C

**Section:** (none)

**Explanation**

**Explanation/Reference:**

answer is verified.

#### QUESTION 134

A Linux LPAR is configured using 802.1Q.

The virtual Ethernet device is configured as an 802.1Q compatible adapter and has VLAN ID 5 configured in the 802.1Q additional VLAN field.

The administrator runs the following commands on the Linux LPAR shell without errors:

```
vconfig add eth0 5ifconfig eth0 10.0.0.2 netmask 255.255.255.0
```

When the administrator tries to ping 10.0.0.1, the request times out.

What is the problem?

- A. The VLAN ID should be in the VLAN-ID field in the virtual Network device configuration.
- B. The administrator is using the incorrect Ethernet device.
- C. The 8021q module is not loaded.
- D. The 802.1Q interfaces are not supported on Linux on Power Systems servers.

**Correct Answer:** A

**Section:** (none)

**Explanation**

**Explanation/Reference:**

**QUESTION 135**

What will cause a broadcast storm when configuring redundant VIO servers with SEA failover?

- A. The secondary SEA is brought online before the configured primary SEA.
- B. A mismatch of defined VLANs between the primary and secondary SEA.
- C. The secondary SEA is created before enabling failover on the primary SEA.
- D. Incorrect EtherChannel configuration on one SEA

**Correct Answer:** C

**Section:** (none)

**Explanation**

**Explanation/Reference:**

**QUESTION 136**

How can an existing AIX 5.2 LPAR, which is using SAN storage, be migrated into a versioned WPAR (Workload Partition)?

- A. Using LPM, but downtime will be required.
- B. Dynamically using LAM.
- C. Backup and restore a mksysb.
- D. Rezone the SAN storage and use NPIV.

**Correct Answer:** C

**Section:** (none)

**Explanation**

**Explanation/Reference:**

:

**QUESTION 137**

An LPAR is configured using Virtual IO. It has two Virtual SCSI adapters, connecting it to two VIO servers.

The disks presented over Virtual SCSI are available across both Virtual SCSI adapters (2 paths).

Assuming 20 disks are required, what is the maximum recommended queue depth to maximize performance?

- A. 20
- B. 22
- C. 510
- D. 512

**Correct Answer:** A

**Section:** (none)

**Explanation**

**Explanation/Reference:**

#### **QUESTION 138**

An administrator is preparing to upgrade the environment's dual Virtual I/O servers (VIOS) from V1.2 to V2.1

What must be considered in preparation for this upgrade?

- A. All client LPARs must be shutdown as both VIO servers have to be upgraded to V2.1 at the same time.
- B. The VIOS must be upgraded to the latest fixpack of V1.5 before upgrading to V2.1.
- C. The only upgrade method that will be supported is using NIM because the current VIOS is lower than V1.3.
- D. VIOS V2.1 requires AIX clients to be running AIX V6.1 at a minimum.

**Correct Answer:** B

**Section:** (none)

**Explanation**

**Explanation/Reference:**

#### **QUESTION 139**

An architect is looking at the implications of uncapped weights for a new POWER7 system. The system will consist of four uncapped logical partitions with the following weightings:

#### LPAR Weight

A	125
B	150
C	100
D	125

Assuming all partitions have equal entitlement and virtual processor configurations in the partition profiles, and request additional resources from the shared processor pool over a period of 1000 cycles, how many cycles will be allocated to LPAR B?

- A. 150
- B. 250
- C. 300
- D. 1000

**Correct Answer:** C

**Section:** (none)

**Explanation**

**Explanation/Reference:**

#### QUESTION 140

Which interface must be used to provide virtualization of tape library devices to client LPARs?

- A. USB
- B. LTO
- C. Virtual SCSI
- D. Virtual Fibre Channel

**Correct Answer:** D

**Section:** (none)

**Explanation**

**Explanation/Reference:**

#### QUESTION 141

An administrator is creating several LPARs on a new Power Systems server. The administrator knows that Live Partition Mobility (LPM) will be used to



distribute the workload between this new machine and several others in the environment. In addition to ensuring all storage is allocated through Virtual IO servers, what else must the administrator take into consideration when creating the new LPARs?

- A. LPAR names in the environment must be unique.
- B. Redundant error path reporting must be configured.
- C. Only LPARs belonging to the same workload group can be moved between servers.
- D. The Virtual IO server code level must be the same across all servers.

**Correct Answer:** A

**Section:** (none)

**Explanation**

**Explanation/Reference:**

## QUESTION 142

An administrator is performing a Live Partition Mobility (LPM) operation between two servers managed by different HMCs. While monitoring the performance of the partition, the virtual console window suddenly closes. What is the most likely cause?

- A. The virtual console is controlled by the HMC and closes when the second takes control of the partition.
- B. The virtual console is a connection to the FSP of the physical server and closes when the LPAR migrates.
- C. The SSH keys have not been exchanged between HMCs.
- D. The FSP has the MAC address for the first HMC cached in NVRAM.

**Correct Answer:** B

**Section:** (none)

**Explanation**

**Explanation/Reference:**

## QUESTION 143

An administrator is designing a new system for their existing batch environment. The current system is a POWER5 570 with 16 cores and 128GB of RAM with a single LPAR running AIX 5.3. It takes 12 hours to run their large batch job which is heavily CPU bound on 4 the available CPUs. The new system will be a Power 770 with 16 cores, 128GB of RAM and the LPAR will run AIX 6.1.What should be done to maximize the batch performance?

- A. Activate TurboCore mode during batch processing
- B. Disable Simultaneous Multi-threading
- C. Disable Multiple Shared Processor Pools
- D. Set the processor compatibility mode to POWER7

**Correct Answer:** B

**Section:** (none)

**Explanation**

**Explanation/Reference:**

corrected.

#### **QUESTION 144**

A second virtual disk has been added to a SuSE Linux LPAR on the existing vhost0 adapter. What must be done for this disk to be recognized on the Linux LPAR?

- A. /usr/bin/cfgmgr
- B. /bin/kpartx -a -v /dev/sdb
- C. echo "- -" > /sys/class/scsi\_host/host0/scan
- D. /usr/bin/rescan-scsi-bus

**Correct Answer:** C

**Section:** (none)

**Explanation**

**Explanation/Reference:**

#### **QUESTION 145**

An architect is designing a new virtualized POWER7 system. The system will have a number of AIX and Linux LPARs and will be deployed with a logical memory block size of 16MB. Which of the following could be used to determine the amount of memory used by the Hypervisor?

- A. System Planning Tool.
- B. System Configurator.
- C. Facts and Features Guide.
- D. LPAR Validation Tool.

**Correct Answer:** A

**Section:** (none)

**Explanation**

**Explanation/Reference:**

#### **QUESTION 146**

An administrator uses DLPAR on an active LPAR to add an additional VLAN ID into an existing virtual adapter used by the SEA. The operation fails with error HSC01221 stating that the Modification of Virtual I/O resources failed. The server being modified is a POWER6 595 running firmware version EH350\_071. The VIO Server is at version 2.2.0.10 FP24Based on this information, what is the most likely cause for this error?

- A. The system firmware needs to be updated to EH350\_085.
- B. The VIO Server needs to be updated to 2.2.0.10 FP 24 SP1.
- C. Dynamic addition of VLAN IDs to an existing virtual adapter are only supported at AIX 7.1.
- D. Dynamic addition of VLAN IDs to an existing virtual adapter are only supported on POWER7 hardware.

**Correct Answer: B**

**Section: (none)**

**Explanation**

**Explanation/Reference:**

#### **QUESTION 147**

An administrator would like to install a new Fix Pack on an existing VIO server. The Fix Pack has been mounted using NFS on /mnt. Which command should the administrator use to achieve this?

- A. installios -update\_all -dev /mnt
- B. iosinst -update -install -accept -dev /mnt
- C. updateios -dev /mnt -accept -install
- D. geninstall -u -ac -d /mnt -f all

**Correct Answer: C**

**Section: (none)**

**Explanation**

**Explanation/Reference:**

#### **QUESTION 148**

A user has accidentally deleted critical system files on an LPAR. Storage on the LPAR is provided using both vSCSI and NPIV. The administrator is preparing to reinstall the LPAR, but has concerns about the existing NPIV configuration. Which statement concerning WWPNS is correct?

- A. During the reinstall of AIX, the HMC will assign new WWPNS to the adapters.
- B. Assigned WWPNS are regenerated during a reinstall for boot devices, but preserved for secondary storage.
- C. Providing the configuration of the virtual Fibre Channel adapters remains unchanged in the LPAR profile, the existing WWPNS are preserved.
- D. The virtual\_fc\_adapters LPAR attribute must be verified prior to the reinstall and suitably updated to preserve all existing WWPNS.

**Correct Answer:** C

**Section:** (none)

**Explanation**

**Explanation/Reference:**

**QUESTION 149**

Which is the lowest edition of PowerVM that will permit redundant VIO Servers?

- A. PowerVM Basic Edition
- B. PowerVM Express Edition
- C. PowerVM Standard Edition
- D. PowerVM Enterprise Edition

**Correct Answer:** C

**Section:** (none)

**Explanation**

**Explanation/Reference:**

**QUESTION 150**

A virtual adapter with IEEE 802.1Q enabled for multiple VLANs has been created on a new VIO Server. This has been turned into a Shared Ethernet Adapter (SEA) but the SEA is not passing the tagged traffic to the outside world. Which of the following actions, when taken on the VIO Server, will fix the issue?

- A. Set the trunk priority is to 1.
- B. mkvdev -vlan ent[Ethernet device] -tagid [VLAN ID] for each PVID.
- C. Re-create the SEA with -vlan [VLAN ID] option.
- D. chvdev -sea en[Ethernet interface] -vlanid [VLAN ID].

**Correct Answer:** B

**Section:** (none)

**Explanation**

**Explanation/Reference:**

**QUESTION 151**

An administrator has installed a new client partition and has used vSCSI to provide the disk for rootvg. The rootvg consists of one single disk, hdisk0, which is provided using a single SAN device presented to a dual VIO server configuration. The client virtual SCSI adapters are vscsi0 and vscsi1. The administrator would like to prioritize I/O traffic for vscsi0. Running which command will achieve this?

- A. chdev
- B. chvpath
- C. chpath
- D. chattr

**Correct Answer:** C

**Section:** (none)

**Explanation**

**Explanation/Reference:**

## QUESTION 152

An administrator has a hardware environment including POWER5, POWER6 and POWER7 architectures. A requirement exists to improve availability across all platforms without additional costs. What technology should be considered?

- A. Live Application Mobility
- B. Live Partition Mobility
- C. Multiple Shared Storage Pools
- D. Resource Monitoring and Control

**Correct Answer:** A

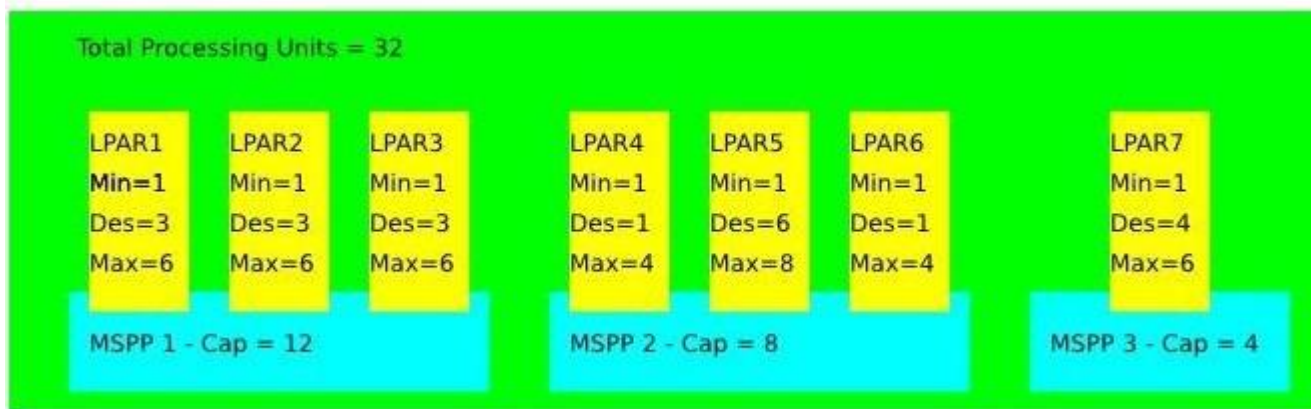
**Section:** (none)

**Explanation**

**Explanation/Reference:**

## QUESTION 153

On the following system which uses Multiple Shared Processor Pools (MSPP):



LPAR6 requires two additional processing units. Which of the following will accomplish this?

- A. DLPAR move two processing units from LPAR2 to LPAR6.
- B. Decrease MSPP1 by two processing units.DLPAR add two processing units to LPAR6.
- C. Move LPAR6 to MSPP3.DLPAR add two processing units to LPAR6.
- D. Add two processing units to MSPP2.DLPAR add two processing units to LPAR6.

**Correct Answer:** D

**Section:** (none)

**Explanation**

**Explanation/Reference:**

#### QUESTION 154

A new Power 750 machine is being prepared for use. When the administrator tries to assign a new LPAR to a secondary shared processor pool, the HMC displays the following error:"This operation is not allowed because the partition is using dedicated processors."What is the most likely cause for the error?

- A. The defined LPAR has yet to be activated.
- B. The defined LPAR has been set to the wrong Processor compatibility mode.
- C. The defined LPAR has the "Allow when partition is active" option checked.
- D. The defined LPAR has the "Allow when partition is inactive" option unchecked.

**Correct Answer:** A

**Section:** (none)

**Explanation****Explanation/Reference:****QUESTION 155**

An administrator has written a script to back up user-defined disk structures on a VIO server. The script makes a list of non-rootvg structures and then uses the savevgstruct command to backup the list of structures. While testing the script, the administrator finds that the disk structures are not all being successfully backed up. What is the most likely cause?

- A. The disk structure is currently offline. It needs to be online for the savevgstruct command to succeed.
- B. The disk structure is currently busy. It needs to be quiesced to remove any file locks.
- C. The disk structure is a Virtual Media Repository. These are backed up using the backupios command.
- D. The disk structure is a Shared Storage Pool. These are backed up with the viosbk command.

**Correct Answer:** A

**Section:** (none)

**Explanation****Explanation/Reference:****QUESTION 156**

An architect requires Active Memory Sharing (AMS) to be implemented for a new AIX environment. Which of the following are minimum requirements in order to implement AMS?

- A. PowerVM Standard Edition, HMC version 7.3.5, VIO Server version 2.1 FP21
- B. PowerVM Enterprise Edition, POWER6 Hardware, AIX 6.1 TL3
- C. PowerVM Standard Edition, POWER7 Hardware, HMC version 7.7.1
- D. PowerVM Enterprise Edition, AIX 6.1 TL4, redundant storage

**Correct Answer:** B

**Section:** (none)

**Explanation****Explanation/Reference:****QUESTION 157**

Which of the following statements is true when considering Active Memory Sharing?

- A. Only one paging VIO server partition is supported in each system.
- B. Only physical hard disks are supported as paging devices.
- C. Each paging VIO server partition must have a single dedicated paging device.
- D. Every partition in the shared memory pool requires its own dedicated paging device.

**Correct Answer:** B

**Section:** (none)

**Explanation**

**Explanation/Reference:**

#### **QUESTION 158**

A systems service processor is being connected to a redundant HMC. Which of the following is required to support DHCP server on dual HMCs?

- A. The two HMCs must be on different subnets.
- B. The redundant HMC must have the 'Redundant DHCP Range' check box selected on ethernet ent0 configuration.
- C. Both HMCs must be running RMC on a shared private network.
- D. The first HMC must be set as primary DHCP range.

**Correct Answer:** A

**Section:** (none)

**Explanation**

**Explanation/Reference:**

#### **QUESTION 159**

A VIO server provides a virtual Fibre Channel adapter to each of 2 LPARs. The HBA has recently been replaced on the VIO server. After the VIO server was rebooted, the clients LPARs were also rebooted. The LUNs are now showing as "Defined" instead of "Available". What is the cause?

- A. The HBA created new WWPNs on the virtual Fibre Channel adapters.
- B. The HBA requires an initial configuration to be performed.
- C. The client virtual Fibre Channel adapters were configured via DLPAR.
- D. The client virtual Fibre Channel needs a map to the new WWPNs.

**Correct Answer:** C



**Section: (none)**

**Explanation**

**Explanation/Reference:**

**QUESTION 160**

While reactivating client LPARs following a scheduled power down, some LPARs have lost visibility to their NPIV-allocated SAN LUNs. On investigation it appears the WWNs have changed on the problem LPARs. What is the most likely cause for the change in WWN?

- A. The option to randomly assign WWNs for security reasons has been selected.
- B. The NPIV adapters on the VIOS LPARs were not tagged as being "required for partition activation."
- C. The virtual Fibre Channel client adapters were dynamically allocated to the LPARs before being added to the partition profile.
- D. The WWNs will have changed due to the recycle of the Hypervisor. The chsyscfg -r command should be used to recover the previously allocated WWN.

**Correct Answer: C**

**Section: (none)**

**Explanation**

**Explanation/Reference:**

**QUESTION 161**

What Shared Ethernet Adapter environment can be implemented to prevent client network outages when the Virtual I/O server needs to be shut down for maintenance?

- A. Shared Ethernet Adapter failover
- B. Link Aggregation on the Virtual I/O Server
- C. Etherchannel on the Virtual I/O Server
- D. Live Partition Mobility

**Correct Answer: D**

**Section: (none)**

**Explanation**

**Explanation/Reference:**

**QUESTION 162**

An administrator is planning to deploy multiple AIX LPARs onto a Power 770. These LPARs will be served with Virtual SCSI storage from a pair of VIO

Servers (VIOS). What consideration should be considered with regard to VIOS configuration to ensure suitable performance of the virtualized storage?

- A. Allocate sufficient CPU processing capacity.
- B. Provide sufficient memory allocation.
- C. Assign each virtual disk on a unique virtual SCSI adapter.
- D. Set the hcheck\_mode attribute on the vSCSI disks.

**Correct Answer:** A

**Section:** (none)

**Explanation**

**Explanation/Reference:**

#### **QUESTION 163**

A customer has a VIO server which runs on internal disks. It can not support an outage during normal business hours. Which action can the administrator take that will support this requirement AND improve overall system availability?

- A. Use the -P flag when setting disk quorum.
- B. Use the -D flag when creating a backup device.
- C. Use the -defer option when mirroring the rootvg.
- D. Use the -immed option when creating a hot spare disk.

**Correct Answer:** C

**Section:** (none)

**Explanation**

**Explanation/Reference:**

#### **QUESTION 164**

An administrator is trying to perform Live Partition Mobility (LPM) between physical systems managed by the same HMC. The VIO Servers (VIOS) on each physical system are connected to the same SAN. The client LPARs will use virtual SCSI (vSCSI) disks. The SCSI adapter slot numbers are between 11 and 20. Each client LPAR has a unique name. The network used by the client LPARs use Logical Host Ethernet adapters (LHEA). The PowerVM Enterprise edition is being used. No EtherChannel has been configured. Why are LPM activities failing?

- A. This LHEA configuration is not supported for LPM.
- B. The SCSI adapter slot numbers are too high.
- C. Multiple MSP (mover service partitions) were configured.
- D. The ssh keys have not been exchanged between the two VIO servers.

**Correct Answer:** A

**Section:** (none)

**Explanation**

**Explanation/Reference:**

up-to-date.

**QUESTION 165**

A partition that uses an LHEA for network connectivity needs to be moved to another managed system. The administrator has the LHEA configured in an Etherchannel with a virtual Ethernet adapter as the backup adapter. When attempting to perform the migration using the Migration Wizard, it fails. What is necessary for the migration to be successful?

- A. The HMC command line interface needs to be used to perform the migration.
- B. The migration must be initiated from the operating systems of the mobile partition.
- C. The LHEA must be removed from the Etherchannel before the migration.
- D. The destination server does not have an LHEA available for the migration.

**Correct Answer:** B

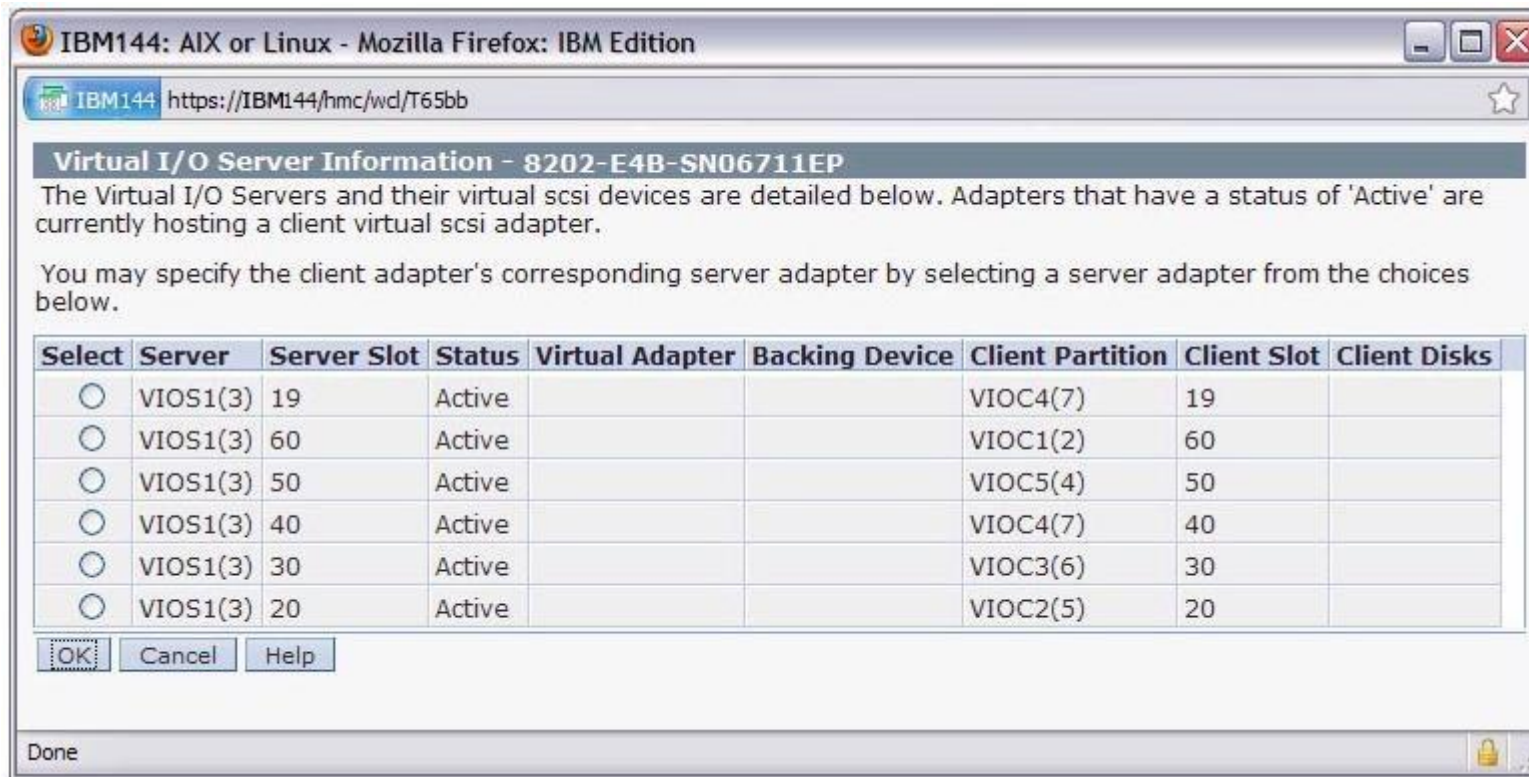
**Section:** (none)

**Explanation**

**Explanation/Reference:**

**QUESTION 166**

The VIO servers in a Power Systems server have already been installed and the LUNs have been mapped to their vhosts as virtual SCSI disks. When defining a client LPAR, the administrator wants to map a virtual client SCSI adapter to a server adapter in one of the VIO servers.



In the "Create Virtual SCSI Adapter" dialog box below, why are the fields for "Backing Device" and "Client Disks" empty?

- A. The information becomes available when the clients are booted.
- B. There needs to be an RMC connection between the HMC and the VIO servers.
- C. This information is only available when using internal disks.
- D. PowerVM Enterprise Edition is required for this feature .

**Correct Answer: A**

**Section: (none)**

**Explanation**

**Explanation/Reference:**

**QUESTION 167**

Which of the following are advantages of configuring a management IP address on a VIO Server?

- A. Allows trunking on the SEA failoverAllows DLPAR of CPU and MemoryAllows network based OS upgrades
- B. Allows the VIO Server to be used as an MSPAllows VIO Server management without access to an HMCAllows browser-based access to ASMI
- C. Allows DLPARAllows network based OS upgradesAllows VIO Server management without access to an HMC
- D. Allows a control channel to be used on SEAsAllows for the use of Live Partition MobilityAllows for security inside a hostile network

**Correct Answer:** C

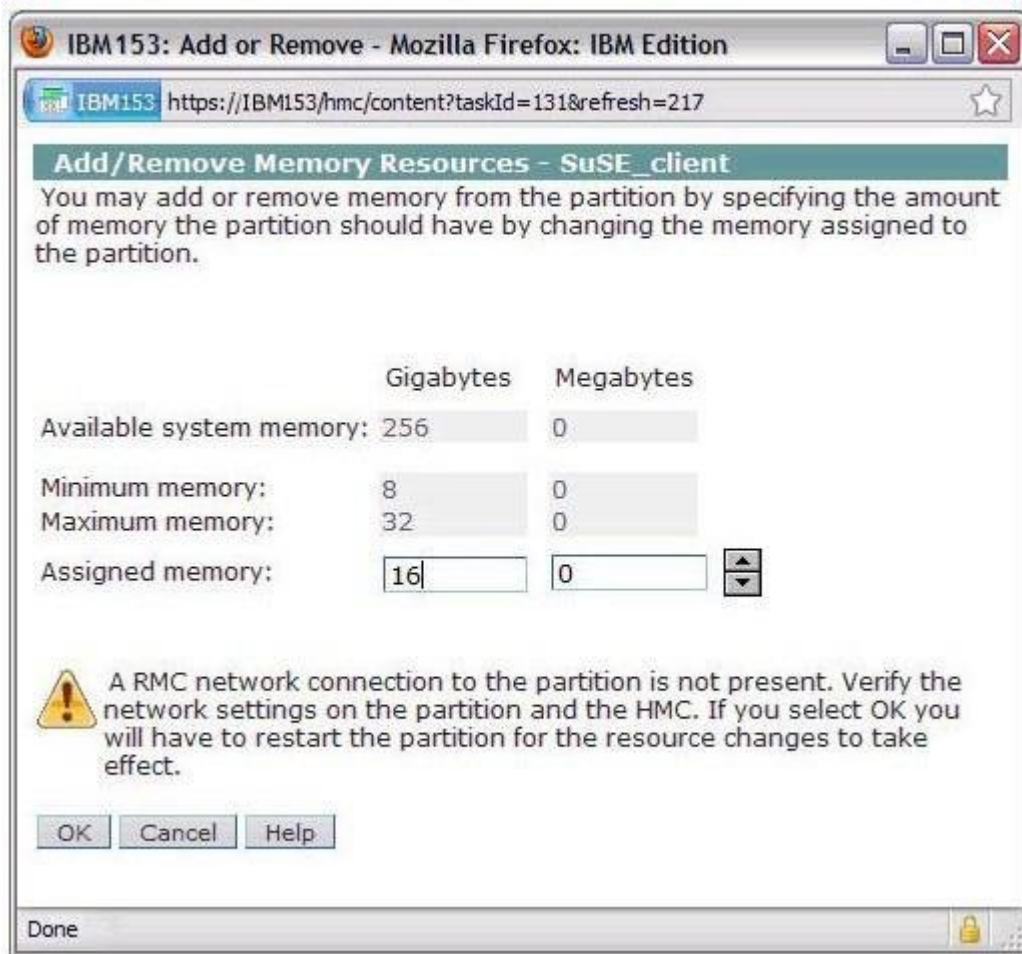
**Section:** (none)

**Explanation**

**Explanation/Reference:**

#### **QUESTION 168**

An administrator has installed a Linux LPAR using virtual storage and virtual networking on a POWER7 system and is attempting to DLPAR additional memory into the LPAR. They see the following error message during the DLPAR operation.



Which action will resolve this issue?

- A. Add the HMC to the /etc/hosts file.
- B. Configure a network on the same subnet on the HMC.
- C. Install the IBM Installation Toolkit for Linux
- D. Upgrade the version on Linux to support memory DLPAR.

**Correct Answer: C**

**Section: (none)**

**Explanation****Explanation/Reference:****QUESTION 169**

When planning for virtual disk redundancy on an AIX LPAR, which solution would provide the highest availability?

- A. N\_Port ID Virtualization (NPIV)
- B. MPIO through redundant VIO Servers
- C. Disk mirroring on the VIO Servers providing the virtual disks
- D. Distinct vhost provided for each disk allocated by the VIO Servers

**Correct Answer:** B

**Section:** (none)

**Explanation****Explanation/Reference:****QUESTION 170**

Which of the following provides resilience when dynamically allocating CPU and memory resources on IBM Power Systems servers?

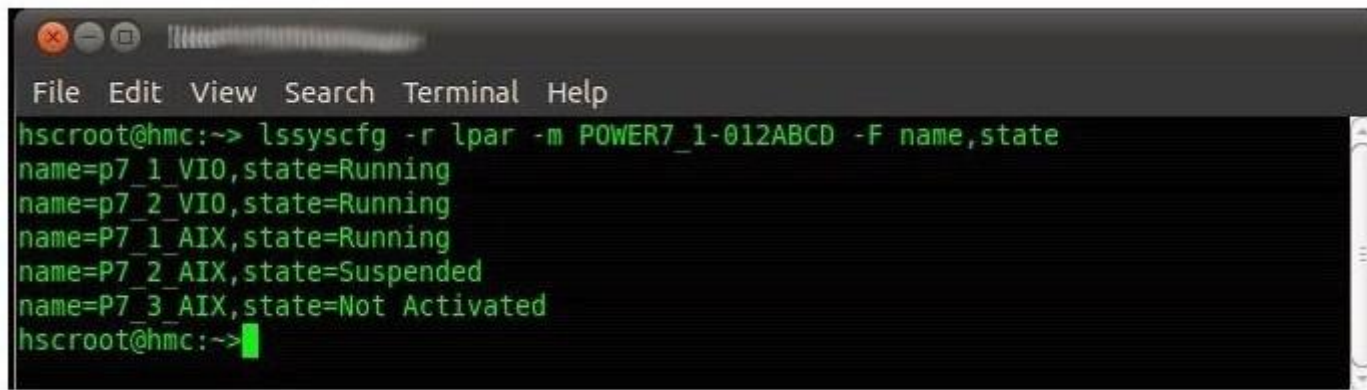
- A. PowerHA System Mirror for Virtualization
- B. PowerVM Enterprise Extended Edition
- C. Redundant VIO server partitions
- D. Redundant Hardware Management Consoles

**Correct Answer:** D

**Section:** (none)

**Explanation****Explanation/Reference:****QUESTION 171**

A VIO server administrator is configuring MPIO-based storage for a new LPAR named P7\_3\_AIX. The administrator runs the `lspv -free` command and sees 4 disks free. The `lsmap -all` command confirms that the disks are free. A check of the list of LPARs shows the following:



```
hscroot@hmc:~> lssyscfg -r lpar -m POWER7_1-012ABCD -F name,state
name=p7_1_VIO,state=Running
name=p7_2_VIO,state=Running
name=P7_1_AIX,state=Running
name=P7_2_AIX,state=Suspended
name=P7_3_AIX,state=Not Activated
hscroot@hmc:~>
```

In order to avoid problems, what else should be verified before mapping storage to the new LPAR?

- A. If the free disks are allocated to P7\_2\_AIX
- B. That the free disks are MPIO capable
- C. If the free disks are allocated to P7\_3\_AIX
- D. That the free disks are allocated to a shared storage pool

**Correct Answer:** D

**Section:** (none)

**Explanation**

**Explanation/Reference:**

#### QUESTION 172

An administrator manages a Power 750 server for application development testing. Full system environments need to be deployed quickly to perform functional application testing. What is the fastest method for the administrator to deploy new AIX environments for the testing staff?

- A. Install a VIO server and install testing LPARs utilizing virtualized network and disks.
- B. Install a NIM server LPAR on the system and perform installations on testing LPARs through Virtual Ethernet adapters.
- C. Use alt\_disk\_install to maintain a new image on alternate disks on testing LPARs.
- D. Create a global LPAR and create test environments using WPAR.

**Correct Answer:** D

**Section:** (none)

**Explanation**



**Explanation/Reference:**

**QUESTION 173**

During the validation of a planned partition migration between managed servers, the following error message is displayed: HSCLA297 The DLPAR Resource Manager (DRM) capability bits 0x0 for mover service partition (MSP) VIOS indicate that partition mobility functions are not supported on the partition. What is the most likely cause of this error?

- A. An RMC error has occurred on one of the VIOS partitions.
- B. The mobile partition has an HEA logical port configured.
- C. There is a mismatch in VIO Server versions between the two systems.
- D. The network connection to the mobile partition is not working.

**Correct Answer:** A

**Section:** (none)

**Explanation**

**Explanation/Reference:**

**QUESTION 174**

A customer has two Power 770 systems in their environment. What is the minimum PowerVM version that will enable a flexible environment that can allow for seamless hardware maintenance?

- A. PowerVM Enterprise Edition
- B. PowerVM Enhanced Edition
- C. PowerVM Standard Edition
- D. PowerVM Express Edition

**Correct Answer:** A

**Section:** (none)

**Explanation**

**Explanation/Reference:**

**QUESTION 175**

An administrator has defined a new virtual SCSI server device, vhost0, to support a client LPAR on a new system. A disk, hdisk2, has been presented from a SAN to the VIO server. The administrator attempts to map the disk on the VIO server using the following command. `mkvdev -vadapter vhost0 -dev hdisk2 -vdev client_rootvg` The error 'client\_rootvg' is not a valid backing device' was received.

Which of the following explains the error?

- A. The disk is already allocated to another VIO server
- B. The virtual target device "client\_rootvg" is already in use.
- C. The disk is formatted at 522 bytes/block.
- D. The -dev and -vdev flags have the incorrect parameters.

**Correct Answer:** D

**Section:** (none)

**Explanation**

**Explanation/Reference:**

#### QUESTION 176

A single port on a physical Ethernet adapter (ent0) has failed on a VIO Server. The network devices are as follows:

```
ent0  Available  2-Port 10/100/1000 Base-TX PCI-X Adapter (1410890:
ent1  Available  2-Port 10/100/1000 Base-TX PCI-X Adapter (1410890:
ent2  Available  Virtual I/O Ethernet Adapter (l-lan)
ent3  Available  Shared Ethernet Adapter
```

When using the diagmenu command to deconfigure the physical adapter, an error occurs saying the adapter is in use.

What is the correct sequence to deconfigure the physical adapter?

- A. Deconfigure ent3 first, then deconfigure ent0, ent1, ent2.
- B. Deconfigure ent3 first, then deconfigure ent0, ent1
- C. Deconfigure ent3 first, then deconfigure only ent0
- D. Deconfigure ent3 first, then deconfigure ent0, ent2.

**Correct Answer:** B

**Section:** (none)

**Explanation**

**Explanation/Reference:**

#### QUESTION 177

An administrator would like to perform a Live Partition Mobility (LPM) operation between two systems. The source system has been configured with a single VIO Server (VIOS) partition and the destination system has been configured with dual VIO server partitions. What must be considered when planning for LPM?

- A. A second VIO Server partition must be configured on the source system to allow for LPM.
- B. An LPAR must be configured on the target system before the LPM operation is invoked.
- C. Device-level virtualization provided by the single VIOS of the source system must be matched by both of the dual VIOS on the target system.
- D. Access to all the disk data must be completely provided by at least one of the destination VIO Server partitions.

**Correct Answer: D**

**Section: (none)**

**Explanation**

**Explanation/Reference:**

answer is updated.

#### **QUESTION 178**

A customer will be ordering a number of small POWER7 machines which require that PCIe cards be placed in a particular configuration. These will be shipped to small customer branches where technical resource is limited. Which feature will direct IBM manufacturing to place PCIe cards as required?

- A. Customer Specified Placement (CSP)
- B. Customer Certified Installation (CCI)
- C. Approved Hardware Configuration (AHC)
- D. Build to Order (BtO)

**Correct Answer: A**

**Section: (none)**

**Explanation**

**Explanation/Reference:**

#### **QUESTION 179**

After opening a virtual terminal to a running AIX LPAR to perform maintenance, an administrator does not receive a login prompt. How can the administrator get the login prompt?

- A. Use smitty tty on the LPAR and enable logins.
- B. Ensure the "Remote Virtual Terminal" option is selected on the HMC.
- C. Set the console option on the LPAR in the SMS menus.
- D. Ensure the "Remote Operation" option is selected on the HMC.

**Correct Answer:** A

**Section:** (none)

**Explanation**

**Explanation/Reference:**

**QUESTION 180**

An administrator is attempting to install a VIO server on a Power 750, but is unable to connect remotely to the console session. How can this be resolved?

- A. Select the option to enable remote operation
- B. Select the option to enable remote virtual terminal connections.
- C. Use the vtmenu command to enable the virtual connection for the server.
- D. Ensure the remote console daemon is running on the host.

**Correct Answer:** B

**Section:** (none)

**Explanation**

**Explanation/Reference:**